



FT-4000 Series Float and Thermostatic Steam Trap

All Stainless Steel

For Pressures to 32 bar... Capacities to 490 kg/hr

Description

With the FT-4000 Series, you can install a float and thermostatic trap in any piping configuration with little or no repiping. You get the reliability of the float and thermostatic operating principle, plus all the benefits of all-stainless steel construction.

- A sealed, tamperproof package
- A compact, lightweight trap
- Exceptional corrosion resistance
- A one-year guarantee against defective materials and workmanship

FT-4000 Series Float & Thermostatic steam traps combine savings in three important areas: energy, installation and replacement. Mounting the FT-4000 on universal connectors with integral strainers provides quick, easy in-line replacement with added protection from dirt and scale.

Maximum Operating Conditions

Maximum allowable pressure (vessel design):
33 bar @ 315°C

Maximum operating pressure:

- Model FT-4075: 5 bar saturated steam
- Model FT-4150: 10 bar saturated steam
- Model FT-4225: 16 bar saturated steam
- Model FT-4300: 21 bar saturated steam
- Model FT-4465: 32 bar saturated steam

Materials

Body: ASTM A240 Grade 304L
 Loose Flange: Zinc Plated Steel (stainless steel available on request)
 Internals: All stainless steel – 304
 Valve and seat: Stainless steel
 Thermostatic air vent: Wafer type-stainless steel with Hastelloy element

Specification

Steam trap shall be float and thermostatic type having stainless steel construction, stainless steel valve, seat and float, for use on an IS-2 connector with integral strainer or TVS-4000 trap valve station. Integral thermostatic element shall be wafer type constructed of Hastelloy and stainless steel. Thermostatic element shall be capable of withstanding 25°C of superheat and be resistant to water hammer damage.

How to order

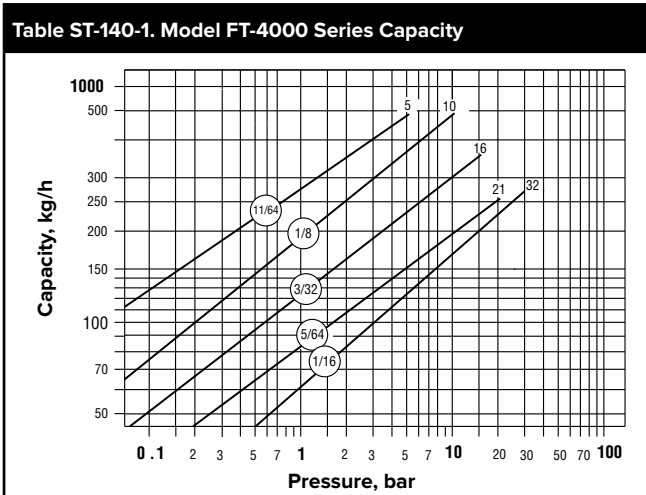
- Specify model number
- Select 360° connector style (IS-2 or TVS 4000)
- Specify maximum working pressure that will be encountered or orifice size
- Specify any options required



TVS 4000 Trap Valve Station with FT-4000 Float and Thermostatic Trap



IS-2 Connector with FT-4000 Float and Thermostatic Trap



† May be derated depending on flange rating and type.

All dimensions and weights are approximate. Use certified print for exact dimensions. Design and materials are subject to change without notice.

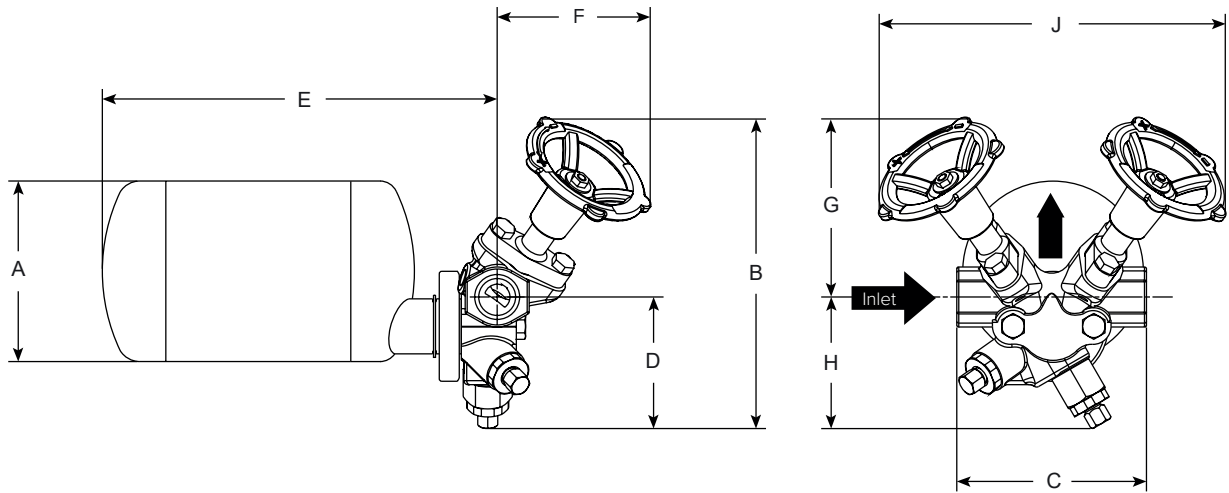
Armstrong International SA • Parc Industriel des Hauts-Sarts (2e Avenue) • 4040 Herstal • Belgium
 Tel.: +32 (0)4 240 90 90 • Fax: +32 (0)4 240 40 33

www.armstronginternational.eu • info@armstronginternational.eu

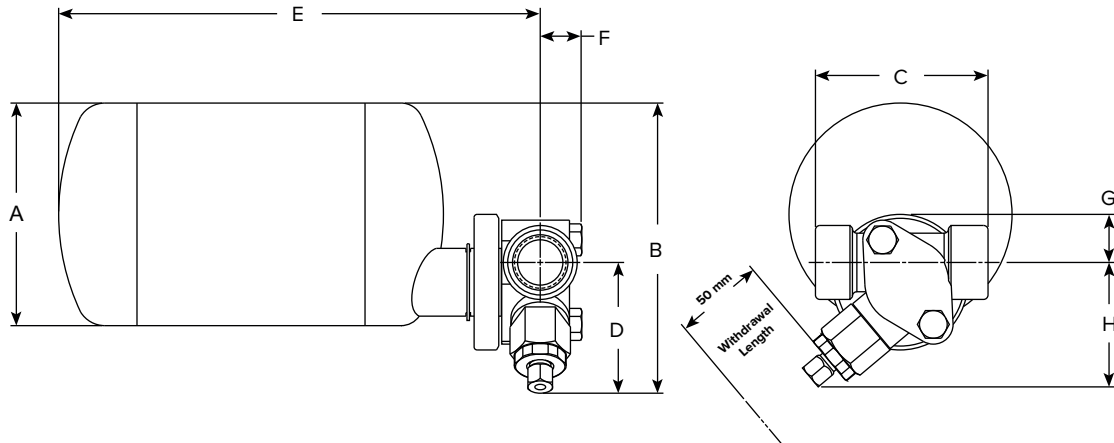
FT-4000 Series Float and Thermostatic Steam Trap

All Stainless Steel

For Pressures to 32 bar... Capacities to 490 kg/hr



Series FT-4000 with TVS 4000 Trap Valve Station



Series FT-4000 With IS-2 Connector with Integral Strainer and Optional Blowdown Valve

Table ST-141-1. FT-4000 Series Float and Thermostatic Steam Trap

Trap Series	FT-4000		
	IS-2 Connector With Integral Strainer		TVS 4000 Connector
Model	mm	mm	mm
Pipe Connections	15 – 20	25	15 – 20
"A" Trap Diameter	114	114	114
"B" Total Height	149	149	198
"C" Face-to-Face	89	101	120
"D" Connection \varnothing to Bottom	67	67	83
"E" Connection \varnothing to Outside of Trap	255	259	250
"F" Connection \varnothing to Front of Connector	22	22	98
"G" Connection \varnothing to Top	25	25	114
"H" Connection \varnothing to Bottom of Connector	64	64	83
"J" Width across Handwheels (valve open)	N/A		221
Test Port Connection	N/A		1/4 NPT
Maximum Operating Pressure (saturated steam)	32 bar		
Maximum Allowable Pressure (vessel design)	33 bar @ 315°C		
Trap Only Weight, in kg	2,8		
Trap and Connector Weight, in kg	4		5,8