

DIMENSIONS & DATA CERTIFIED FOR:

Representative:

Order:

Customer:

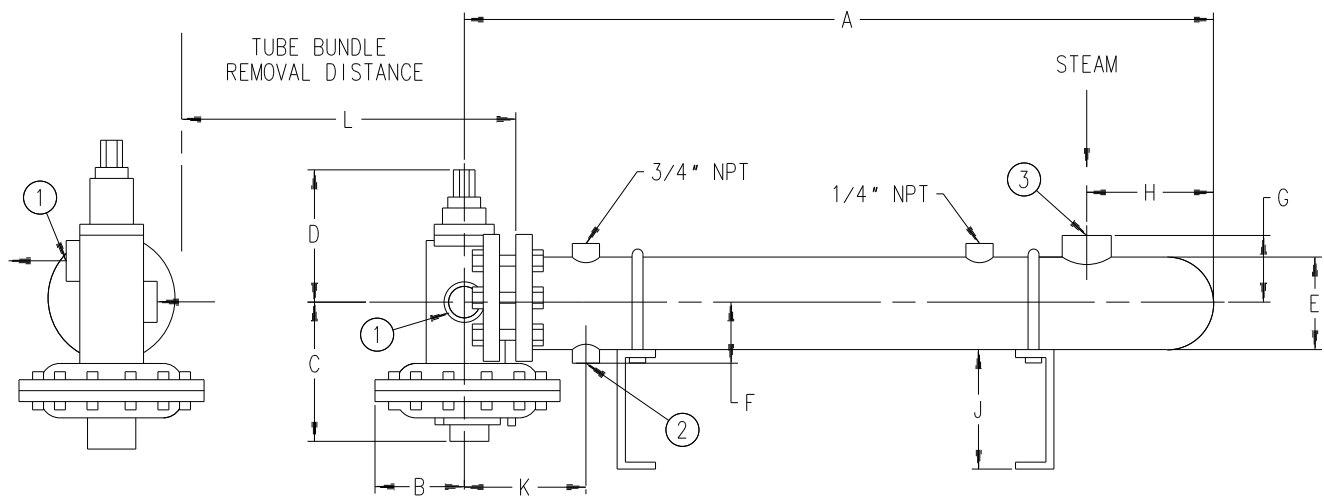
Order:

Project:

Requirements:

By:

Date:



Dimensions & Weights

Model	Dimensions											Connections			Weight		
	A	B	C	D	E	F	G	H	J	K	L	1	2	3			
665 SS	in	82-3/4	5-3/4	10-3/8	10-3/8	6-5/8	4-3/4	5-1/2	9-1/4	7-1/2	8-3/4	74	2 NPT	1-1/4 NPT	3 NPT	lb	335
	mm	2102	146	264	264	168	121	140	235	191	222	1880	50	32	80	kg	152
8120 SS	in	90	5-3/4	10-3/8	10-3/8	8-5/8	6-1/8	8-7/8	9-1/2	8	14-1/2	74	2 NPT	2 NPT	4 150# ANSI	lb	670
	mm	2286	146	264	264	219	156	225	241	203	368	1880	50	50	100	kg	298

List Of Materials

Body	316 Stainless Steel
Valve	316 Stainless Steel
Valve Seats	316 Stainless Steel
Diaphragm	Viton Reinforced with Nomex Fiber
Heat Exchanger Shell	Carbon Steel* ASTM SA-53B
Heat Exchanger Tubes	5/8" [15.9mm] 16 BWG, 316L Stainless Steel
Tube Sheets	316 Stainless Steel
Tube Bundle End Cap	316 Stainless Steel

* 316 stainless steel available.

Specifications

Application	Steam to Water
Steam Supply Pressure	2-15 psig [0.14-1 bar]
Water Supply Pressure	20-125 psig [1.4-8.5 bar]
Max. Water Pressure Drop	10 psig [0.7 bar]



ARMSTRONG HOT WATER GROUP
221 Armstrong Blvd.,
Three Rivers, MI. 49093

Armstrong (269) 279-3600 Fax(269) 273-8656
Posted on Armstrong's homepage www.armstrong-intl.com

Product	CDY No.	Date
Stainless Steel Flo-Rite-Temp Instantaneous Water Heater	1070	3/25/98
		Rev. B