

# DIMENSIONS & DATA CERTIFIED FOR:

Representative:

Order:

Customer:

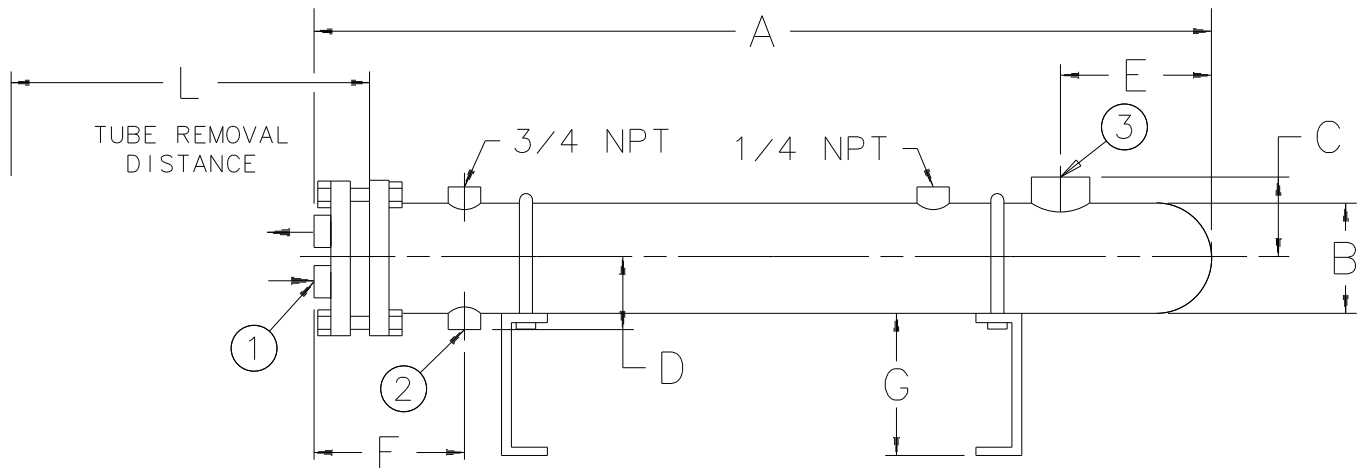
Order:

Project:

Requirements:

By:

Date:



## Dimensions & Weights

Model	A	B	C	D	E	F	G	L	1	2	3	Weight
442 ST	54-1/2" [1384mm]	4-1/2" [114mm]	3-1/2" [89mm]	3-1/2" [89mm]	7" [178mm]	6-1/2" [165mm]	5" [127mm]	50" [1270mm]	1-1/4 NPT [32]	3/4 NPT [20]	2 NPT [50]	94 lb [43 kg]
552 ST	67-1/4" [1708mm]	5-9/16" [141mm]	4-1/2" [114mm]	4" [102mm]	7-7/8" [200mm]	6-3/4" [171mm]	6" [152mm]	62" [1575mm]	1-1/2 NPT [40]	1 NPT [25]	2-1/2 NPT [65]	169 lb [77 kg]
662 ST	80-1/4" [2038mm]	6-5/8" [168mm]	5-1/2" [140mm]	4-3/4" [121mm]	9-1/4" [235mm]	6-7/8" [175mm]	7-1/2" [191mm]	74" [1880mm]	2 NPT [50]	1-1/4 NPT [32]	3 NPT [80]	239 lb [108 kg]
862 ST	83-1/2" [2121mm]	8-5/8" [219mm]	8-7/8" [225mm]	6-1/8" [156mm]	9-1/2" [241mm]	7-7/8" [200mm]	8" [203mm]	74" [1880mm]	3 NPT [80]	2 NPT [50]	4" 150# ANSI [100]	440 lb [200 kg]

### List of Material

Head	Cast Iron A-278
Heat Exchanger Shell	Carbon Steel ASTM-SA-53B
Heat Exchanger Tubes	Brass ASTM B-111 Alloy C44300 5/8" - 16 BWG
Tube Sheets	Brass ASTM B-16
Tube Bundle End Cap	Brass ASTM B-16

### Specifications

Tube Side Max. Working Pressure	150 psig [10.2 bar]
Shell Side Max. Working Pressure	150 psig [10.2 bar]
Shell Side Fluid	Steam
Max. Working Temperature	375 °F [191 °C]



**ARMSTRONG HOT WATER GROUP**  
221 Armstrong Blvd.,  
Three Rivers, MI. 49093

**Armstrong** (269) 279-3600 Fax(269) 273-8656  
Posted on Armstrong's homepage [www.armstrong-intl.com](http://www.armstrong-intl.com)

Product	CDY No.	Date
FLO-RITE-TEMP Shell & Tube Heat Exchanger with Cast Iron Head	1011	2/04/98
		Rev. A