

# DIMENSIONS & DATA CERTIFIED FOR:

Representative:

Order:

Customer:

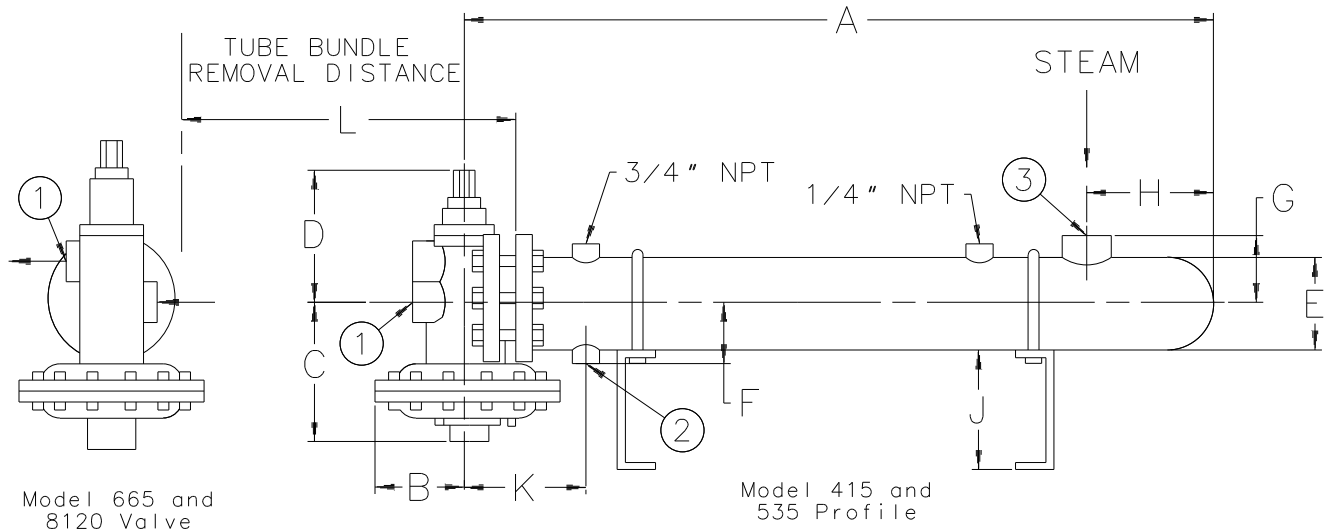
Order:

Project:

Requirements:

By:

Date:



Dimensions & Weights

Model	Dimensions										Connections			Weight	
	A	B	C	D	E	F	G	H	J	K	L	1	2		3
415	54" [1372mm]	4-1/2" [114mm]	7-1/2" [191mm]	7" [178mm]	4-1/2" [114mm]	3-5/16" [84mm]	3" [76mm]	7" [178mm]	5" [127mm]	6-1/4" [159mm]	50" [1270mm]	1 NPT [25]	3/4 NPT [20]	2 NPT [50]	133 lb [60 kg]
535	67-1/2" [1715mm]	5-1/4" [133mm]	8-5/8" [219mm]	9" [229mm]	5-9/16" [141mm]	4" [102mm]	3-11/16" [94mm]	7-7/8" [200mm]	6" [152mm]	7-1/2" [191mm]	62" [1575mm]	1-1/2 NPT [40]	1 NPT [25]	2-1/2 NPT [65]	235 lb [107 kg]
665	82-3/4" [2102mm]	5-3/4" [146mm]	10-3/8" [264mm]	10-3/8" [264mm]	6-5/8" [168mm]	4-5/8" [117mm]	4-9/16" [116mm]	9-1/4" [235mm]	7-1/2" [191mm]	8-3/4" [222mm]	74" [1880mm]	2 NPT [50]	1-1/4 NPT [32]	3 NPT [80]	358 lb [162 kg]
8120	85" [2159mm]	5-3/4" [146mm]	11-3/4" [298mm]	12" [305mm]	8-5/8" [219mm]	6" [152mm]	8-7/8" [225mm]	9-1/2" [241mm]	8" [203mm]	9-1/2" [241mm]	74" [1880mm]	3 NPT [80]	2 NPT [50]	4" 150# ANS1 [100]	585 lb [265 kg]

List Of Materials

Body	Bronze
Valve	(415) 303 SS w/Teflon Inserts (535, 665, & 8120) Brass
Valve Seats	(415 & 535) 303 SS (665 & 8120) Brass
Diaphragm	Viton GF Reinforced with Nomex Fiber
Heat Exchanger Shell	Carbon Steel* ASTM SA-53B
Heat Exchanger Tubes	5/8" [15.9mm] 16 BWG Admiralty Brass ASTM B-111
Tube Sheets	Brass ASTM B-16
Tube Bundle End Cap	Brass ASTM B-16

\*Units are ASME "U" stamped.

Specifications

Application	Steam to Water
Steam Operational Pressure	2-15 psig [0.14-1 bar]
Water Operational Pressure	20-150 psig [1.4-10.4 bar]
Max. Water Pressure Drop	10 psig [0.7 bar]
Max. Allowable Steam Pressure	150 psig [10.4 bar]
Max. Allowable Water Pressure	200 psig [13.8 bar]



**ARMSTRONG HOT WATER GROUP**  
221 Armstrong Boulevard  
Three Rivers, MI 49093  
Phone No. 1-269-279-3600 Fax 1-269-273-8656  
Posted on Armstrong's homepage [www.armstrong-intl.com](http://www.armstrong-intl.com)

Flo-Rite-Temp  
Instantaneous  
Water Heater

Date	3/8/00	Rev.	D
Drawing No.	CDY 1010		