

DIMENSIONS & DATA CERTIFIED FOR:

Representative:

Order:

Customer:

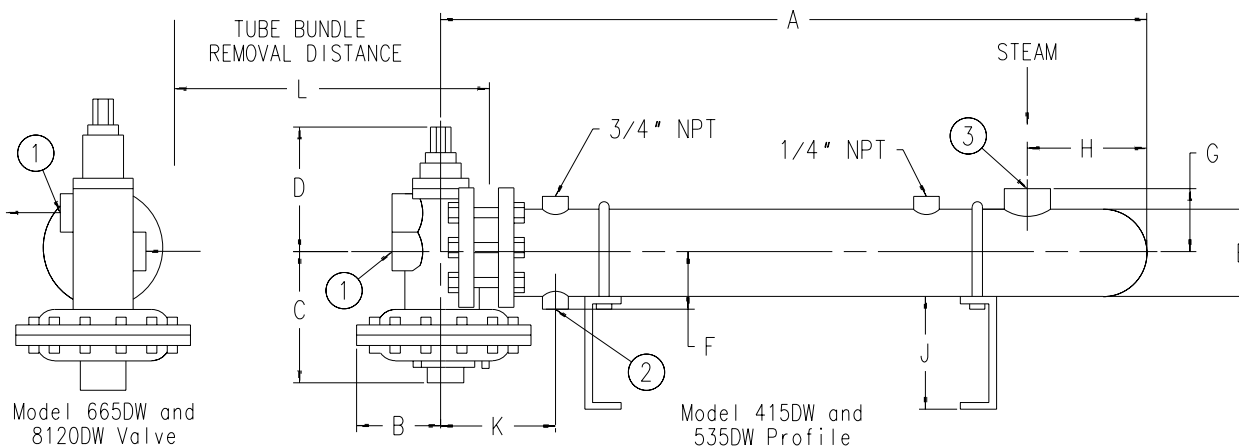
Order:

Project:

Requirements:

By:

Date:



Dimensions & Weights

Model	Dimensions											Connections			Weight
	A	B	C	D	E	F	G	H	J	K	L	1	2	3	
415DW	76-1/8" [1934mm]	4-1/2" [114mm]	7-1/2" [191mm]	7" [178mm]	4-1/2" [114mm]	3-3/8" [86mm]	3-3/4" [95mm]	10-1/2" [267mm]	5" [127mm]	6-7/8" [175mm]	75" [1905mm]	1 NPT [25]	3/4 NPT [20]	2 NPT [50]	199 lb [90 kg]
535DW	77-3/8" [1965mm]	5-1/4" [133mm]	8-5/8" [219mm]	9" [229mm]	5-9/16" [141mm]	4" [102mm]	4-1/4" [108mm]	11-1/2" [292mm]	6" [152mm]	8-1/8" [206mm]	75" [1905mm]	1-1/2 NPT [40]	1 NPT [25]	2-1/2 NPT [65]	270 lb [122 kg]
665DW	90-5/8" [2302mm]	5-3/4" [146mm]	10-3/8" [264mm]	10-3/8" [264mm]	6-5/8" [168mm]	4-3/4" [121mm]	5" [127mm]	11-3/4" [298mm]	7-1/2" [191mm]	9-3/4" [248mm]	87" [2210mm]	2 NPT [50]	1-1/4 NPT [32]	3 NPT [80]	444 lb [201 kg]
8120DW	79-7/8" [2029mm]	5-3/4" [146mm]	11-3/4" [298mm]	12" [305mm]	8-5/8" [219mm]	6" [152mm]	8-3/4" [222mm]	12-5/8" [321mm]	8" [203mm]	11-5/8" [295mm]	75" [1905mm]	3 NPT [80]	2 NPT [50]	4* 150# ANSI [100]	665 lb [302 kg]

List Of Materials	
Body	Bronze
Valve	(415 DW) 303 SS w/Teflon Inserts (535DW, 665DW & 8120DW) Brass
Valve Seats	(415DW & 535DW) 303 SS (665DW & 8120DW) Brass
Diaphragm	Viton GF Reinforced with Nomex Fiber
Heat Exchanger Shell	Carbon Steel* ASTM SA-53B
Heat Exchanger Tubes	5/8" [15.9mm] Copper Inner Tube 3/4" [19mm] I.D. Grooved Copper Outer Tube
Tube Sheets**	Steam Side, Steel Water Side, Brass

Specifications	
Application	Steam to Water
Steam Supply Pressure	2-15 psig [0.14-1 bar]
Water Supply Pressure	20-125 psig [1.4-8.5 bar]
Max. Water Pressure Drop	10 psig [0.7 bar]


 Armstrong-Yoshitake, Inc.
 221 Armstrong Blvd.,
 Three Rivers, MI. 49093
Armstrong (616) 279-3600 Fax(616) 273-8656
 Posted on Armstrong's homepage www.armstrong-intl.com

*Units are ASME "U" stamped.

**There is an open vent to atmosphere between the tube sheets to detect tube failure.

Product	CDY No.	Date
Flo-Rite-Temp Double Wall Instantaneous Water Heater	1009	2/02/98
		Rev. B