

# DIMENSIONS & DATA CERTIFIED FOR:

Representative:

Order:

Customer:

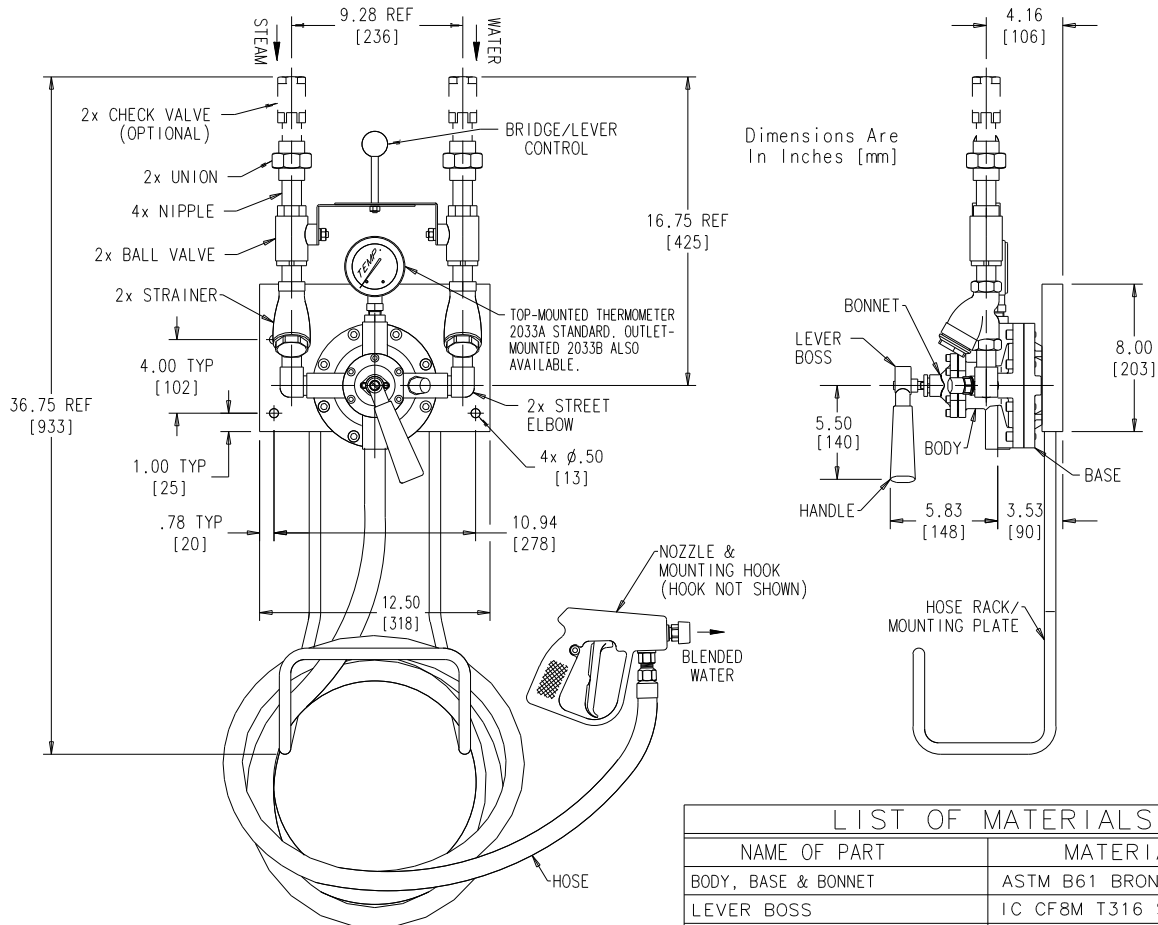
Order:

Project:

Requirements:

By:

Date:



## LIST OF MATERIALS

NAME OF PART	MATERIAL
BODY, BASE & BONNET	ASTM B61 BRONZE
LEVER BOSS	1C CF8M T316 SS
HANDLE	PHENOLIC
GASKET	NON ASBESTOS
CHECK VALVE (Optional)	ASTM B62 BRONZE
BALL VALVE & UNION	
NIPPLE & STREET ELBOW	ASTM B16 BRASS
HOSE RACK/MOUNTING PLATE	ASTM A167 T304 SS
STRAINER	ASTM B62 BRASS
THERMOMETER, 3"ø 0°-250°F	18-8 SS
HOSE (25' Or 50' Available)	POLY WRAP, 400 psi at 180°F.
NOZZLE	RUBBER COVERED NOZZLE
NOZZLE MOUNTING HOOK	ASTM A167 T304 SS

### A) 55°F [13°C] Temperature Rise

STEAM	15	45	75	100	psi
WATER	[1]	[3]	[5]	[7]	[bar]
22 psi [1.5]	10.2 [38.6]				gal/min
45 psi [3]	6.9 [26.1]	13.2 [49.9]			[l/min]
60 psi [4]	13.8 [52.2]	15.7 [59.4]			

### B) 100°F [38°C] Temperature Rise

STEAM	15	45	75	100	psi
WATER	[1]	[3]	[5]	[7]	[bar]
22 psi [1.5]	8.3 [31.4]		8.5 [32.1]		gal/min
45 psi [3]	3.6 [13.6]	6.9 [26.1]	9.4 [35.5]	9.9 [37.4]	[l/min]
60 psi [4]	10.5 [39.7]				

### C) 135°F [57°C] Temperature Rise

STEAM	15	45	75	100	psi
WATER	[1]	[3]	[5]	[7]	[bar]
22 psi [1.5]	6.6 [24.9]		7.2 [27.2]		gal/min
45 psi [3]	2.5 [9.4]	5.0 [18.9]	7.2 [27.2]	8.0 [30.2]	[l/min]
60 psi [4]	10.5 [39.7]				

### FLOW RATES:

- A) "User Safe" Temperature (120°F [48°C] Approx.)
- B) "Hot Hose Down" Temperature (150/160°F [65/71°C] Approx.)
- C) "Common Bacteria Kill" (180°F [82°C] Approx.) \*

\*The phrase "Common Bacteria Kill" is not meant to imply sterilization capability but to indicate the ability of STEAMIX to handle the higher temperatures required in Food, Beverage, Pharmaceutical Plants etc.

### SPECIFICATIONS:

1. Connections, 3/4" [DN20] NPT
2. Operating Pressure-  
Steam/Water 150 psi [10 bar] Max.  
Steam/Water 20 psi [1.4 bar] Min.
3. Maximum Pressure Loss Ratio 10:1
4. Inlet Check Valves Required
5. Weight, Unit;  
68 lbs [31 kgs] W/ 25' HOSE  
79 lbs [36 kgs] W/ 50' HOSE



**ARMSTRONG HOT WATER GROUP**

221 Armstrong Boulevard  
Three Rivers, MI 49093

**Armstrong** 1-888-HOT HOSE (1-888-468-4673) Fax 1-269-279-3130  
Posted on Armstrong's homepage [www.armstrong-intl.com](http://www.armstrong-intl.com)

STEAMIX  
2033 STANDARD

Date

9/15/99

Rev.

G

Drawing No.

CDLW 1033