

# DIMENSIONS & DATA CERTIFIED FOR:

Representative:

Order:

Customer:

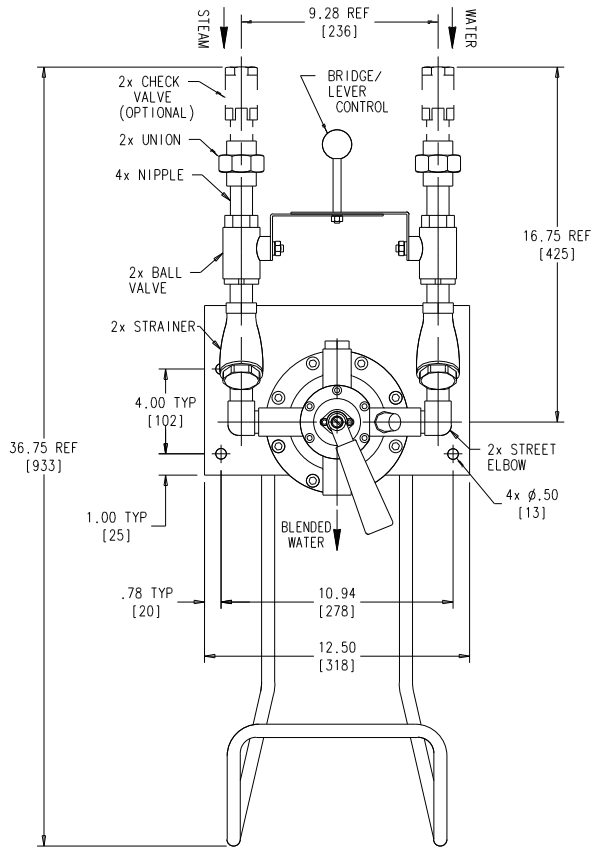
Order:

Project:

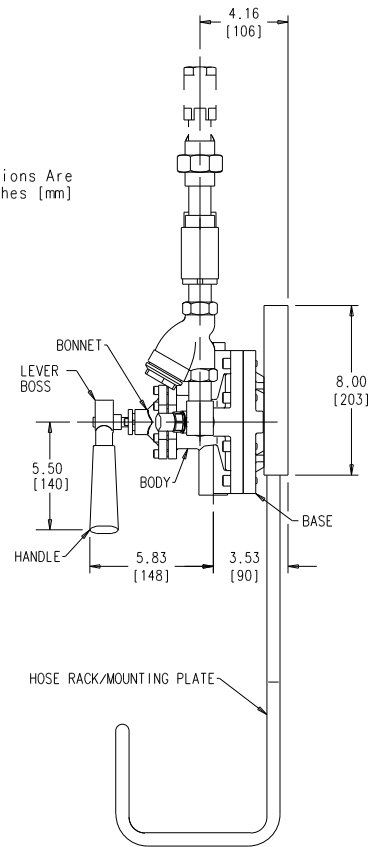
Requirements:

By:

Date:



Dimensions Are  
In Inches [mm]



**A) 55°F [13°C] Temperature Rise**

STEAM	15	45	75	100	psi
WATER	[1]	[3]	[5]	[7]	[bar]
22 psi [1.5]	10.2 [38.6]		9.9		gal/min
45 psi [3]	6.9 [26.1]	13.2 [49.9]		[l/min]	
60 psi [4]	13.8 [52.2]		15.7 [59.4]		

**B) 100°F [38°C] Temperature Rise**

STEAM	15	45	75	100	psi
WATER	[1]	[3]	[5]	[7]	[bar]
22 psi [1.5]	8.3 [31.4]		8.5 [32.1]		gal/min
45 psi [3]	3.6 [13.6]	6.9 [26.1]	9.4 [35.5]		[l/min]
60 psi [4]	10.5 [39.7]				

**C) 135°F [57°C] Temperature Rise**

STEAM	15	45	75	100	psi
WATER	[1]	[3]	[5]	[7]	[bar]
22 psi [1.5]	6.6 [24.9]		7.2 [27.2]		gal/min
45 psi [3]	2.5 [9.4]	5.0 [18.9]	8.0 [30.2]		[l/min]
60 psi [4]	7.2 [27.2]				

**FLOW RATES:**

- A) "User Safe" Temperature (120°F [48°C] Approx.)
- B) "Hot Hose Down" Temperature (150/160°F [65/71°C] Approx.)
- C) "Common Bacteria Kill" (180°F [82°C] Approx.) \*

\*The phrase "Common Bacteria Kill" is not meant to imply sterilization capability but to indicate the ability of STEAMIX to handle the higher temperatures required in Food, Beverage, Pharmaceutical Plants etc.

**SPECIFICATIONS:**

1. Connections, 3/4" [DN20] NPT
2. Operating Pressure-  
Steam/Water 150 psi [10 bar] Max.  
Steam/Water 20 psi [1.4 bar] Min.
3. Maximum Pressure Loss Ratio 10:1
4. Inlet Check Valves Required
5. Weight, Unit;  
40 lbs [18 kgs]

**LIST OF MATERIALS**

NAME OF PART	MATERIAL
BODY, BASE & BONNET	ASTM B62 BRONZE
LEVER BOSS	1C CF8M T316 SS
HANDLE	PHENOLIC
GASKET	NON ASBESTOS
CHECK VALVE (Optional)	
BALL VALVE & UNION	ASTM B62 BRONZE
STRAINER	
NIPPLE & STREET ELBOW	ASTM B16 BRASS
HOSE RACK/MOUNTING PLATE	T304 SS
BRIDGE/LEVER CONTROL	ASTM A167 T304 SS & PHENOLIC



**ARMSTRONG HOT WATER GROUP**

221 Armstrong Boulevard  
Three Rivers, MI 49093

**Armstrong** 1-888-HOT HOSE (1-888-468-4673) Fax 1-269-279-3130  
Posted on Armstrong's homepage [www.armstrong-intl.com](http://www.armstrong-intl.com)

STEAMIX  
2032 STANDARD

Date	9/15/99	Rev.	G
Drawing No.	CDLW 1032		