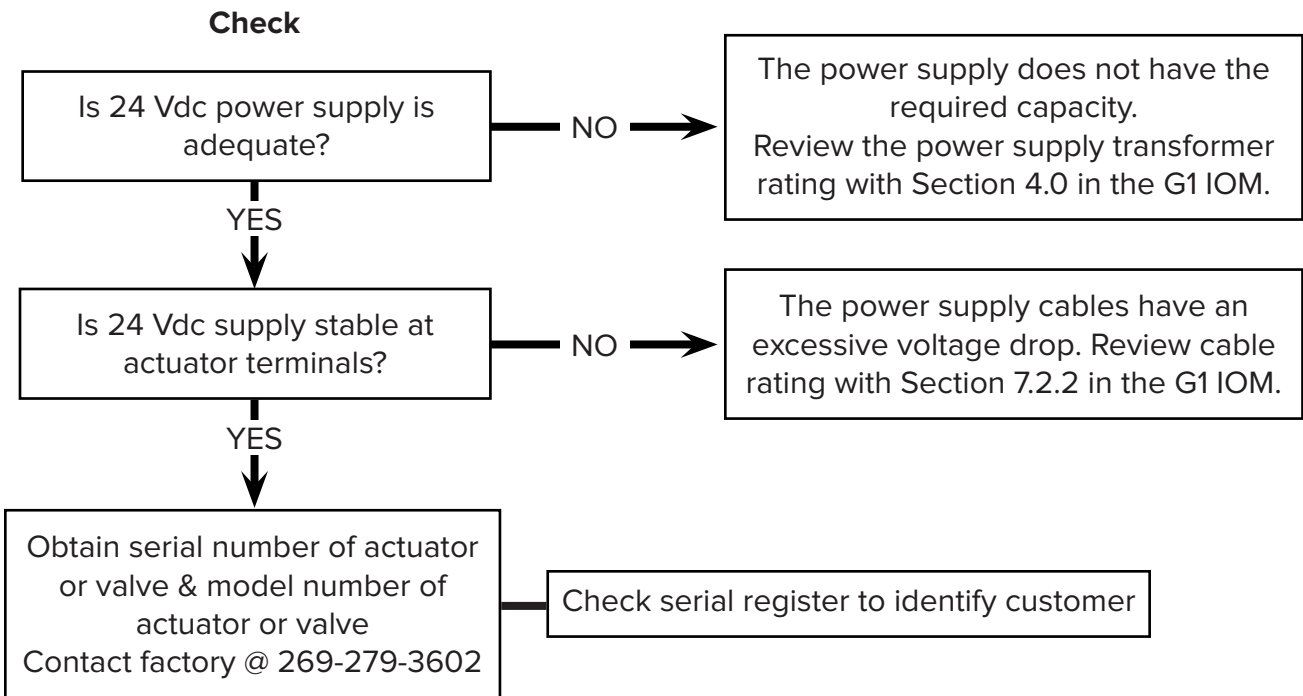
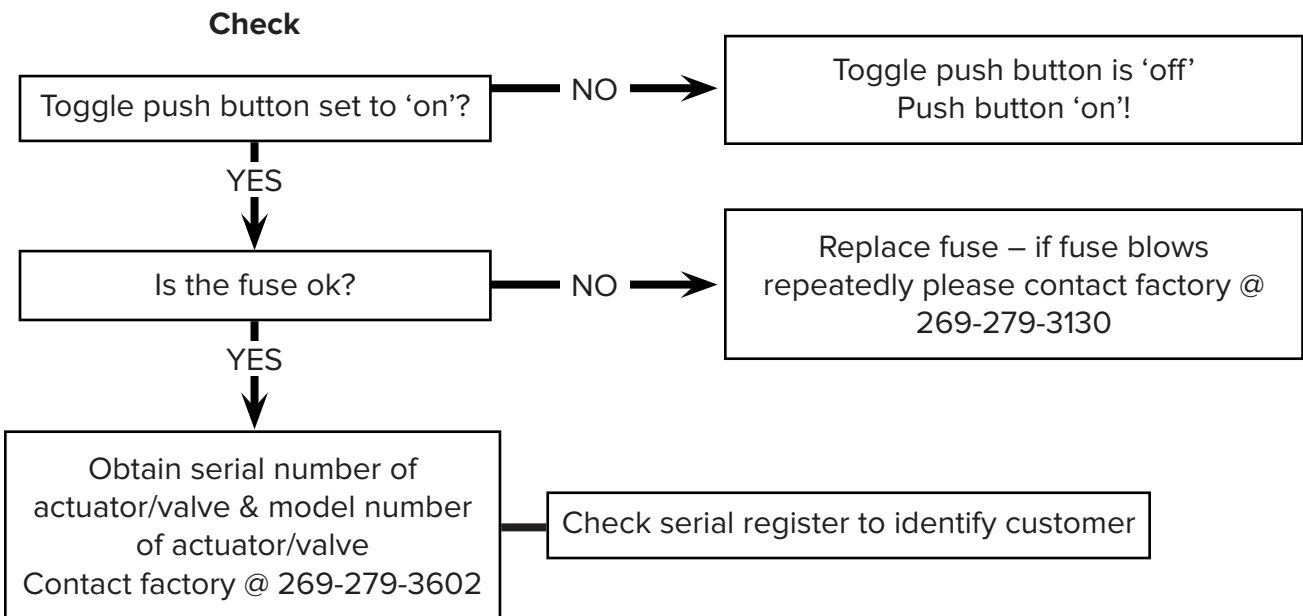


Actuator display lights up intermittently, but does not move

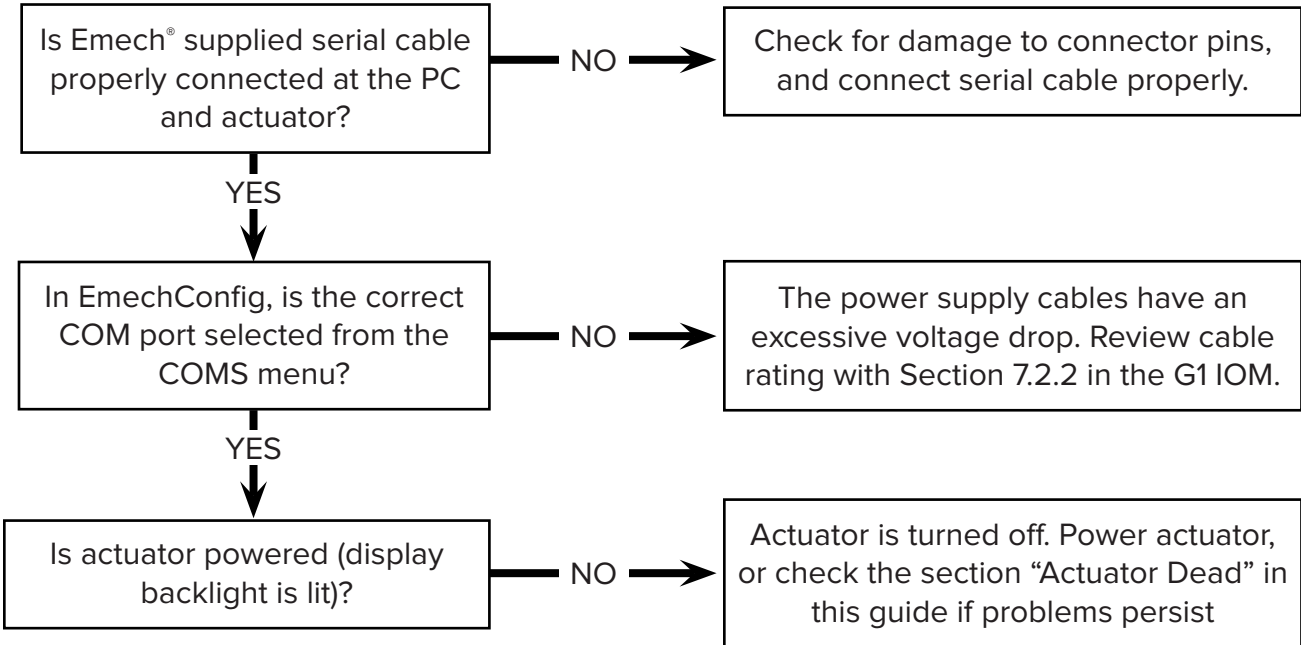


Actuator dead (display not lit, no movement)



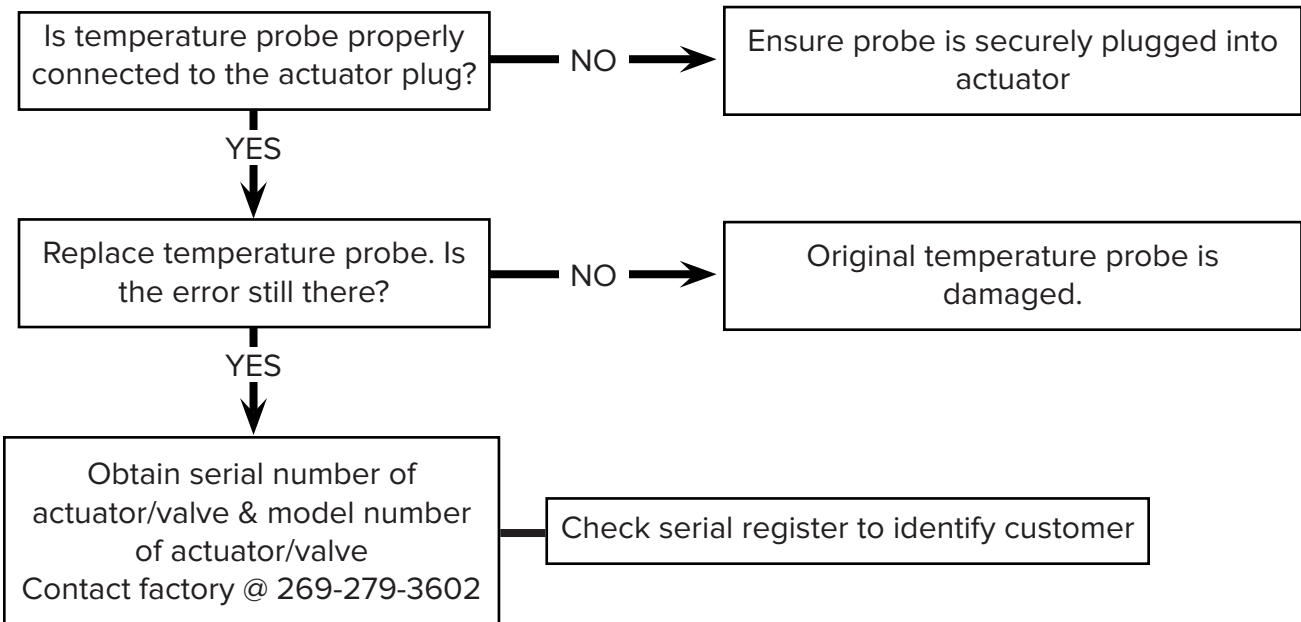
No communication when using EmechConfig

Check



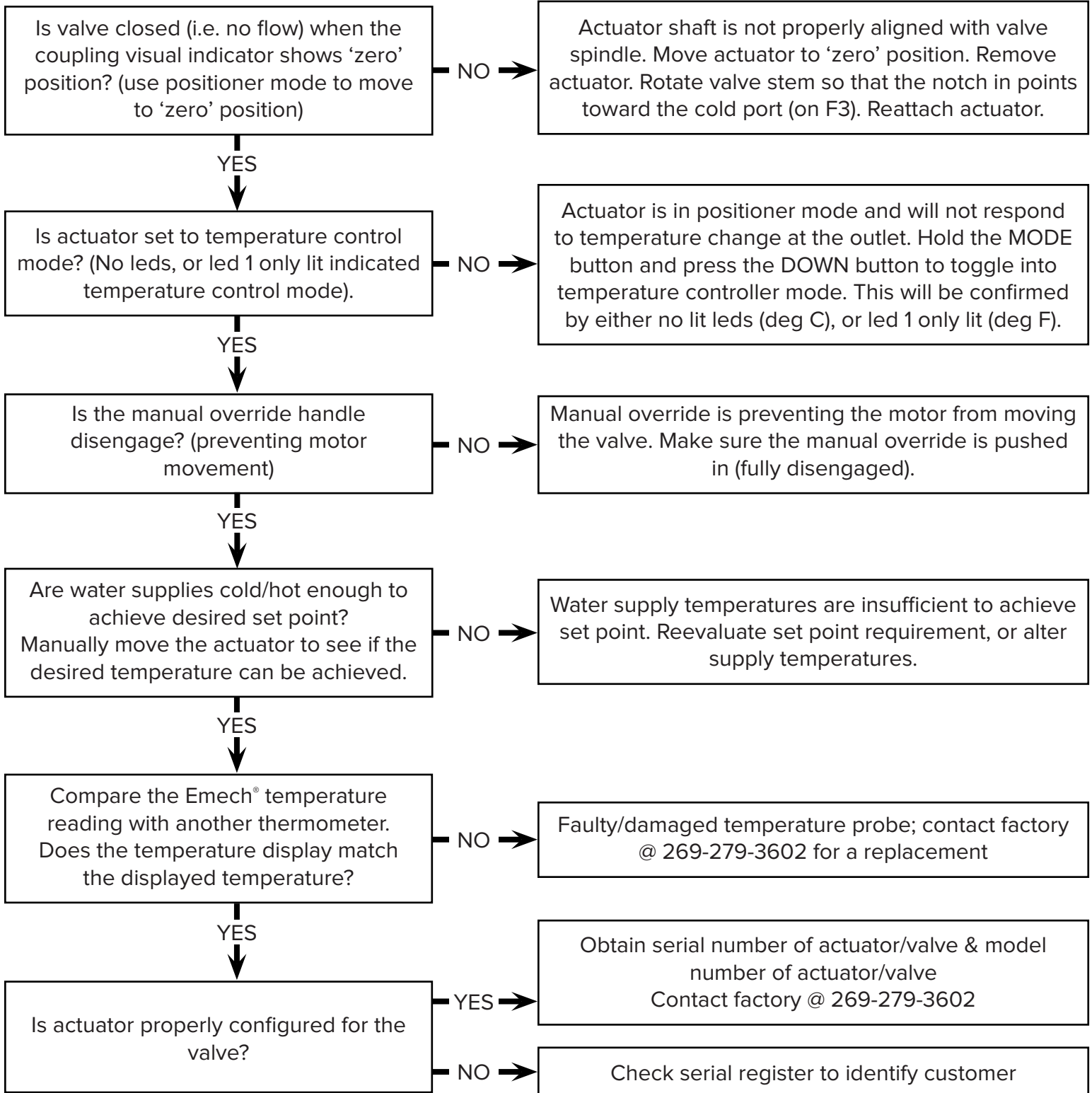
Actuator displays ‘E2’ when set Temperature Controller Mode

Check



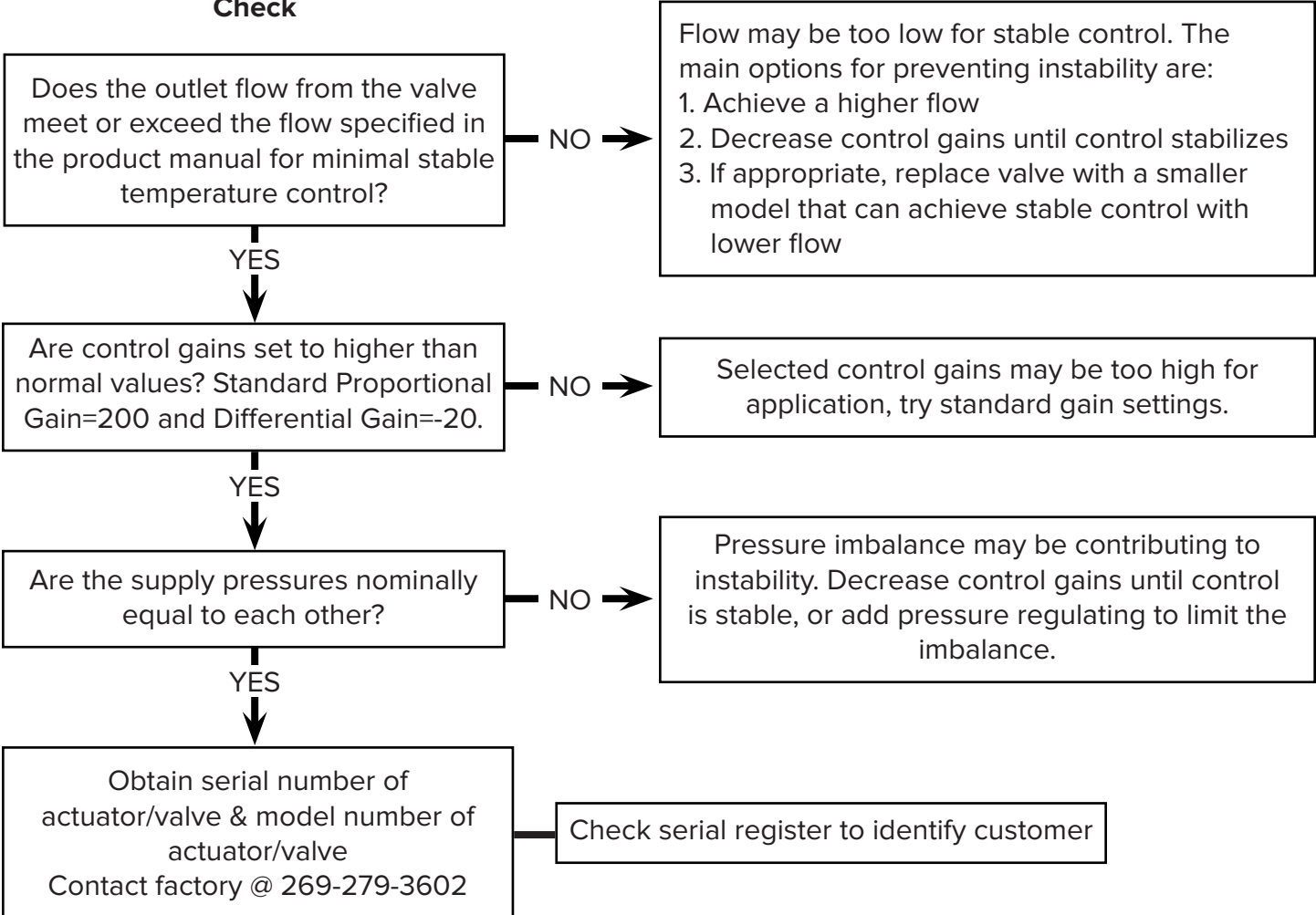
Failure to Reach Set Point

Check



Control is Unstable/Oscillates

Check



Control is Unstable/Oscillates

Check

