

## Connect to the DRV

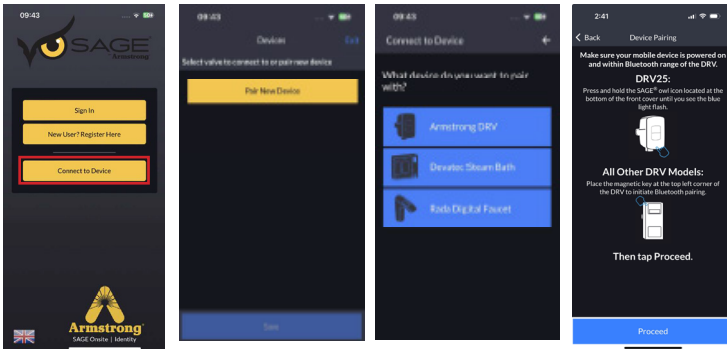
1

Download the “SAGE by Armstrong” mobile app from either the Apple App Store or Google Play or scan this QR code shortcut.



2

Open up the ‘mobile application’ and follow the steps shown below. Tap on the ‘Connect to Device’ to pair with Armstrong device.



3

Follow the steps located in the full product manual at [https://armstronginternational.com/wp-content/uploads/IOM\\_DRV80\\_TheBrain\\_501\\_EN\\_20180301.pdf](https://armstronginternational.com/wp-content/uploads/IOM_DRV80_TheBrain_501_EN_20180301.pdf) to adjust settings. For quick access to the IOM, scan the QR code on the front cover of this guide.

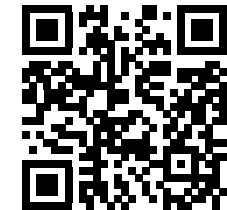
## Warranty and Certifications

The Brain® Model DRV50 and The Brain® Model DRV80 shall have a five (5) year parts warranty on all components other than preventative maintenance service items listed in the IOM, which includes batteries and all ‘wetted’ O-rings and seals.



Armstrong International  
North America • Latin America • India • Europe / Middle East / Africa • China • Pacific Rim  
[armstronginternational.com](http://armstronginternational.com)

## The Brain® Model DRV50 and DRV80 Digital Recirculation Valve Quick Start Guide



DRV50/80 IOM

### Read this guide before starting up the DRV.

- Applicable codes must be followed and supersede any other instructions. Generally applicable codes in the US include: IPC (International Plumbing Code).
- Improper installation or operation may cause a flood resulting in property damage, personal injury, or death. Armstrong strongly recommends that a qualified installer perform DRV start-up.
- DRV service must be performed by a qualified individual.
- Improper installation, start-up, operation, maintenance, or service may void the warranty.
- **Hot water or metal may cause scald burns. Skin exposure to 140°F water or metal for only five seconds could cause a second-degree burn.**

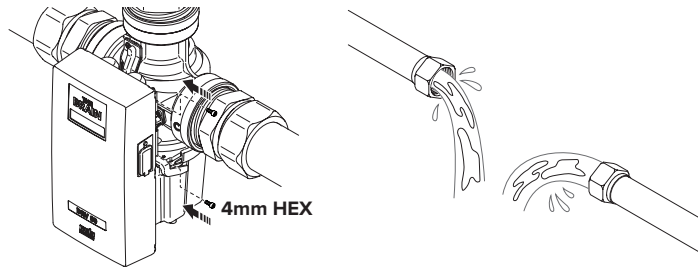
Before using The Brain®, consult the full product manual by scanning the QR code or visiting <https://armstronginternational.com/products/the-brain-digital-recirculation-valve/>.

# Mechanical Quick Start

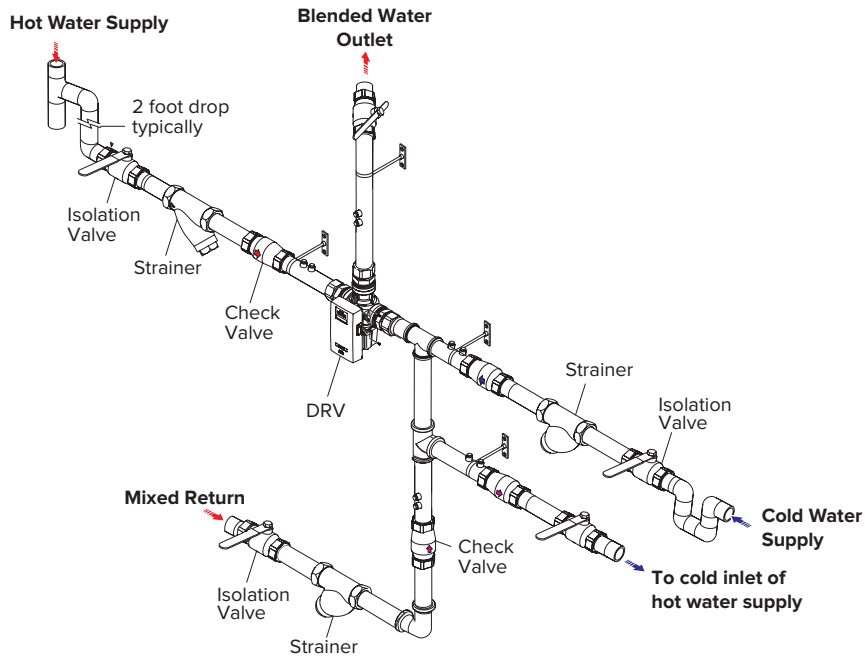
Make sure that all operating conditions are within the specification limit located in the full product manual (see QR code or URL on cover).

**1** Prepare the DRV to be installed by taking it out of the packaging and installing the appropriate inlet/outlet adapters, if required. Flush all pipework thoroughly. Close and secure the Electronics Module with the 2x4mm hexagon socket screws provided.

**NOTE: Electronics Module must be closed for the DRV80 to operate.**

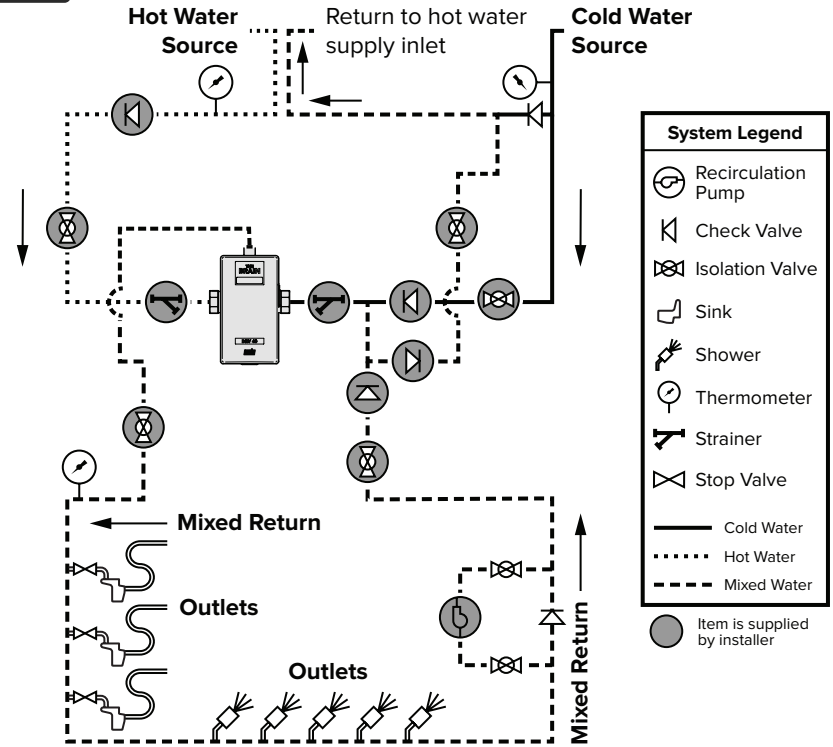


**2** Connect the DRV to the pipework, ensuring that check valves, strainers, and isolation valves are fitted as shown in the example illustrated below.



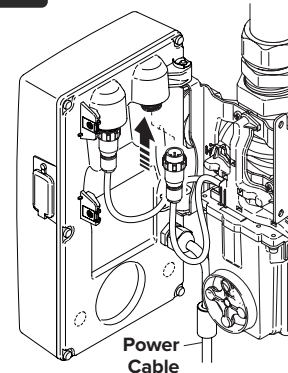
**3**

Make sure that each pipe is connected in the correct location in the system and in the proper orientation.



# Electrical Quick Start

**1** Plug the DRV into an approved circuit.



**2** Turn power on and ensure the LED on the front cover cycles through the initial power up sequence.

