

DIMENSIONS & DATA CERTIFIED FOR:

Representative:

Order:

Customer:

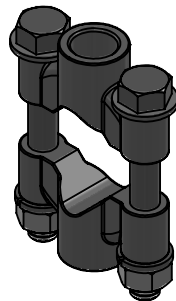
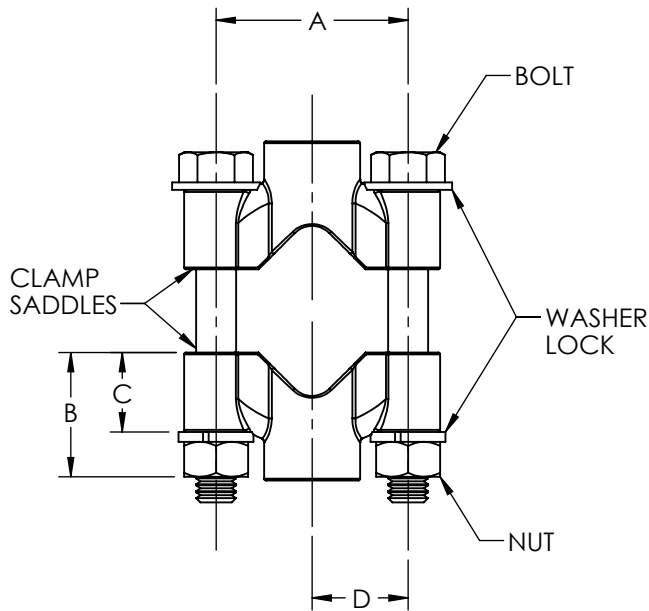
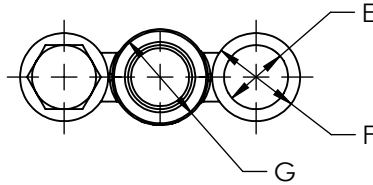
Order:

Project:

Requirements:

By:

Date:



Dimensions Are In Inches [mm]

Waveguide Dimensions 1/2" - 1-1/4" [15 - 32]				
Waveguide Pipe Size	1/2, [15]	3/4, [20]	1, [25]	1-1/4, [32]
A	1.5, [38.1]	1.5, [38.1]	2.12, [53.8]	2.12, [53.8]
B	1, [25.4]	1, [25.4]	1.2, [30.5]	1.2, [30.5]
C	0.62, [15.7]	0.62, [15.7]	0.78, [19.8]	0.78, [19.8]
D	0.75, [19.1]	0.75, [19.1]	1.06, [26.9]	1.06, [26.9]
E	0.34, [8.6]	0.34, [8.6]	0.34, [8.6]	0.34, [8.6]
F	0.5, [12.7]	0.5, [12.7]	0.52, [13.2]	0.52, [13.2]
G	0.75, [19.1]	0.75, [19.1]	0.75, [19.1]	0.75, [19.1]
Weight lbs, [kg]	0.3, [0.14]	0.3, [0.14]	0.4, [0.2]	0.4, [0.2]
Clamp Saddles	316SS	316SS	316SS	316SS
Bolt *	Hex HD. 5/16-18 x 2.5 [64] LG	Hex HD. 5/16-18 x 2.5 [64] LG	Hex HD. 5/16-18 x 2.5 [64] LG	Hex HD. 5/16-18 x 2.5 [64] LG
Washer Lock*	5/16 [7.9]	5/16 [7.9]	5/16 [7.9]	5/16 [7.9]
Nut*	Hex HD. 5/16-18	Hex HD. 5/16-18	Hex HD. 5/16-18	Hex HD. 5/16-18

Waveguide Dimensions 1-1/2" - 3" [40 - 80]				
Waveguide Pipe Size	1-1/2, [40]	2, [50]	2-1/2, [65]	3, [80]
A	2.75, [69.9]	2.75, [69.9]	3.37, [85.6]	4, [101.6]
B	1.5, [38.1]	1.5, [38.1]	1.6, [40.6]	1.9, [48.3]
C	1.05, [26.7]	1.05, [26.7]	1, [25.4]	1.2, [30.5]
D	1.38, [34.9]	1.38, [34.9]	1.69, [42.8]	1.77, [45.0]
E	0.41, [10.4]	0.41, [10.4]	0.41, [10.4]	0.41, [10.4]
F	0.7, [17.8]	0.7, [17.8]	0.7, [17.8]	0.7, [17.8]
G	0.75, [19.1]	0.75, [19.1]	0.75, [19.1]	0.75, [19.1]
Weight lbs, [kg]	0.9, [0.41]	0.9, [0.41]	1, [0.45]	1, [0.45]
Clamp Saddles	316SS	316SS	316SS	316SS
Bolt *	Hex HD. 3/8-16 x 3.5 [88.9] LG	Hex HD. 3/8-16 x 4.0 [101.6] LG	Hex HD. 3/8-16 x 4.5 [114.3] LG	Hex HD. 3/8-16 x 5.5 [139.7] LG
Washer Lock*	3/8 [9.53]	3/8 [9.53]	3/8 [9.53]	3/8 [9.53]
Nut*	Hex HD. 3/8-16	Hex HD. 3/8-16	Hex HD. 3/8-16	Hex HD. 3/8-16

* SS T316 HARDWARE



Product

WAVEGUIDES 1/2" - 3"

ENGLISH

CD No.

CD2660

Rev;

A

Date

09/27/2021

WEB

Y|N

SHEET 1 OF 1

By; Herb Nash