

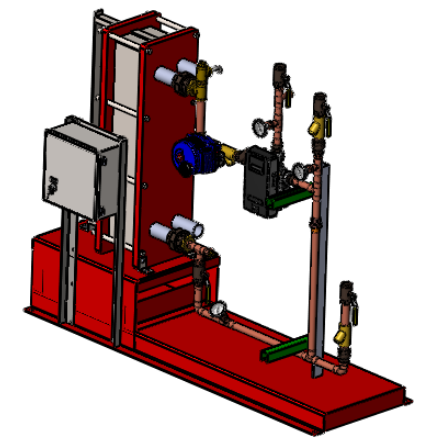
APPROVAL

BY: _____ DATE: _____

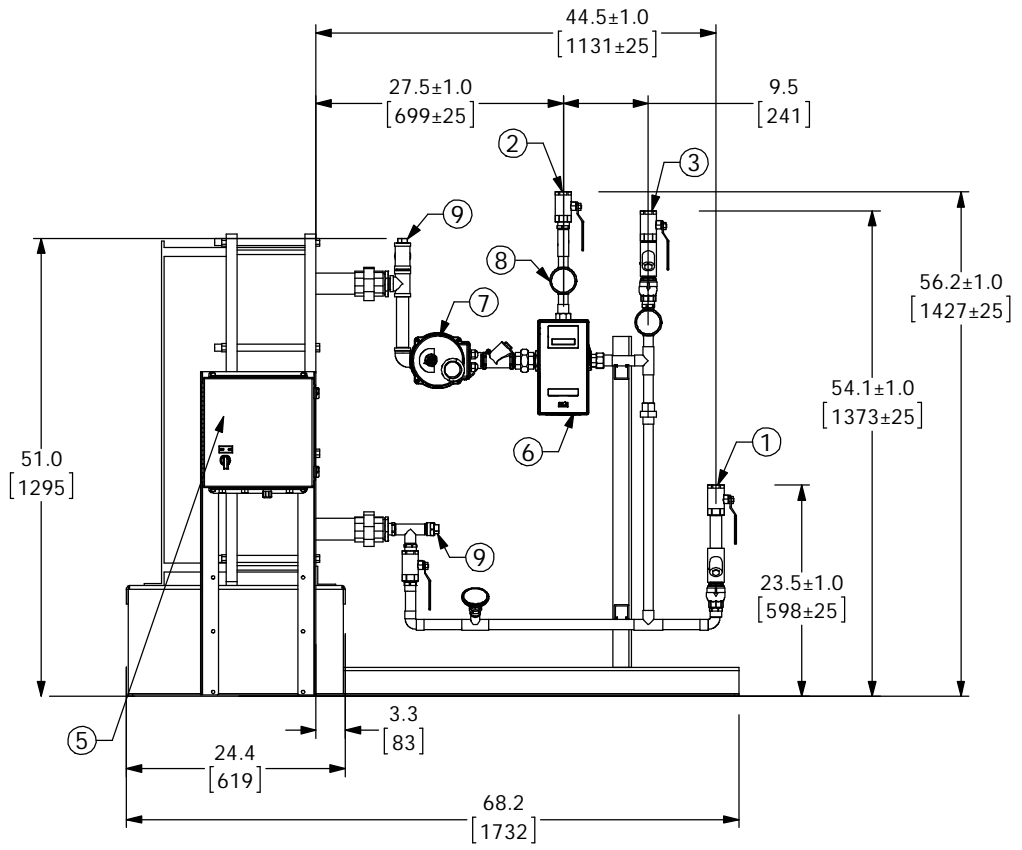
APPROVED, PROCEED WITH FABRICATION

APPROVED AS NOTED, PROCEED WITH FABRICATION IN ACCORDANCE WITH COMMENTS

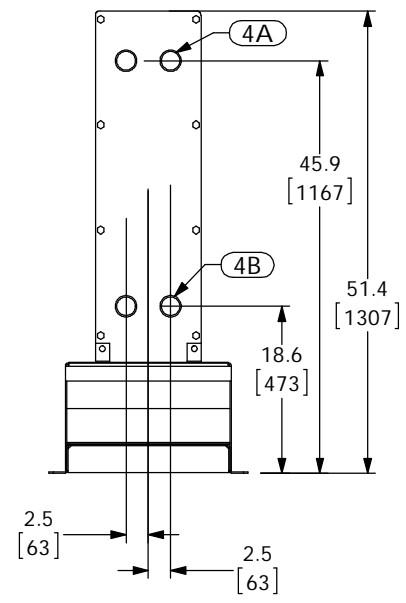
DISAPPROVED, DO NOT FABRICATE



DIGITAL FLO BOILER WATER/WATER PLATE & FRAME HEAT EXCHANGER DOUBLE WALL



PIPING AND COMPONENTS HIDDEN TO SHOW CONNECTIONS



PROJECT NAME :

TAG :

| ITEM | DESCRIPTION | CONNECTION |
|------|--|---------------|
| 1 | COLD WATER INLET | 1" NPT |
| 2 | MIXED WATER OUTLET | 1" NPT |
| 3 | RECIRC WATER INLET | 1" NPT |
| 4A | PRIMARY(BOILER) INLET | 2" NPT |
| 4B | PRIMARY(BOILER) OUTLET | 2" NPT |
| 5 | ELECTRICAL PANEL/BRAINSCAN | 110VAC @ 1.2A |
| 6 | DRV40 | 1-1/2" NPT |
| 7 | N.C. ACTUATED BALL VALVE SAFETY SHUT OFF | 1" NPT |
| 8 | THERMOMETER (3) | |
| 9 | CIP CONNECTION (2) | 1" NPT |
| 10 | SRV(PRESSURE) PIPE TO DRAIN | 1" NPT |
| 11 | SRV(CONNECTION FOR USER SUPPLIED T&P) | 3/4" NPT |

| ITEM | MATERIAL |
|------------------------|-----------------|
| PIPING | COPPER TYPE "L" |
| EXCHANGER PLATE MATL. | T316L SS |
| EXCHANGER GASKET MATL. | NITRILE |

- NOTE(S):
- ALL DIMENSIONS +/- .5[13] UNLESS OTHERWISE SHOWN.
 - COMPLETE ASSEMBLY LEAD FREE COMPLIANT - THE WETTED SURFACE OF THIS PRODUCT CONTACTED BY CONSUMABLE WATER CONTAINS LESS THAN ONE QUARTER OF ONE PERCENT (0.25%) OF LEAD BY WEIGHT.
 - PACKAGE INCLUDES ALL REQUIRED INLET CHECK VALVES AND STRAINERS ON DOMESTIC SIDE.
 - DRV, SAFETY SHUT OFF AND ELECTRICAL PANEL ARE PREWIRED TO PROVIDE A SINGLE ELECTRICAL LANDING POINT AT THE PANEL.

| | | | | | | | | | | | | | | | |
|---|--|------|-------------------|----------------|--------------|-------|--|-------------|--------------|------------|--------------|-----------|--|--------|--|
| Armstrong | ARMSTRONG INTERNATIONAL Copyright © 2010 ARMSTRONG INTERNATIONAL, INC. | | | | | | | | | | | | | | |
| | DF15WEDW40BS 1 NPT CPR | | | | | | | | | | | | | | |
| | CONFIG# (C-XXXXXX) | | | | | | | | | | | | | | |
| <table border="1"> <tr> <td>NAME</td> <td>DATE</td> </tr> <tr> <td>DRAWN</td> <td>CFG 02/26/2013</td> </tr> <tr> <td>RELEASED</td> <td>SALES</td> </tr> </table> | NAME | DATE | DRAWN | CFG 02/26/2013 | RELEASED | SALES | <table border="1"> <tr> <td>MATERIAL</td> <td>SHEET 1 OF 1</td> </tr> <tr> <td>REV</td> <td>DWG: D5XXXXX</td> </tr> </table> | MATERIAL | SHEET 1 OF 1 | REV | DWG: D5XXXXX | | | | |
| NAME | DATE | | | | | | | | | | | | | | |
| DRAWN | CFG 02/26/2013 | | | | | | | | | | | | | | |
| RELEASED | SALES | | | | | | | | | | | | | | |
| MATERIAL | SHEET 1 OF 1 | | | | | | | | | | | | | | |
| REV | DWG: D5XXXXX | | | | | | | | | | | | | | |
| <table border="1"> <tr> <td>IN.</td> <td>MM</td> </tr> <tr> <td>FRACTIONAL ± 1/64</td> <td></td> </tr> <tr> <td>ANGULAR: ± 2</td> <td></td> </tr> <tr> <td>DECIMAL</td> <td>XXX ± .0005</td> </tr> <tr> <td></td> <td>XXX ± .005</td> </tr> <tr> <td></td> <td>XX ± .015</td> </tr> <tr> <td></td> <td>X ± .3</td> </tr> </table> | IN. | MM | FRACTIONAL ± 1/64 | | ANGULAR: ± 2 | | DECIMAL | XXX ± .0005 | | XXX ± .005 | | XX ± .015 | | X ± .3 | |
| IN. | MM | | | | | | | | | | | | | | |
| FRACTIONAL ± 1/64 | | | | | | | | | | | | | | | |
| ANGULAR: ± 2 | | | | | | | | | | | | | | | |
| DECIMAL | XXX ± .0005 | | | | | | | | | | | | | | |
| | XXX ± .005 | | | | | | | | | | | | | | |
| | XX ± .015 | | | | | | | | | | | | | | |
| | X ± .3 | | | | | | | | | | | | | | |