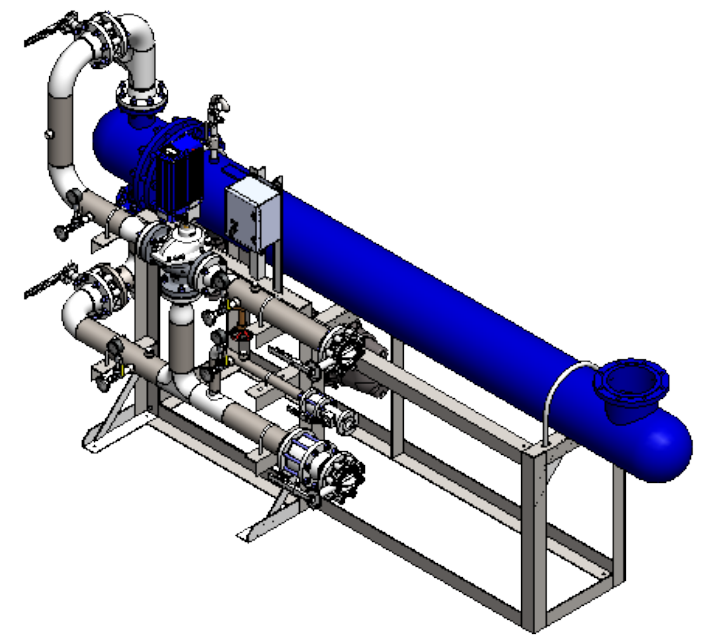


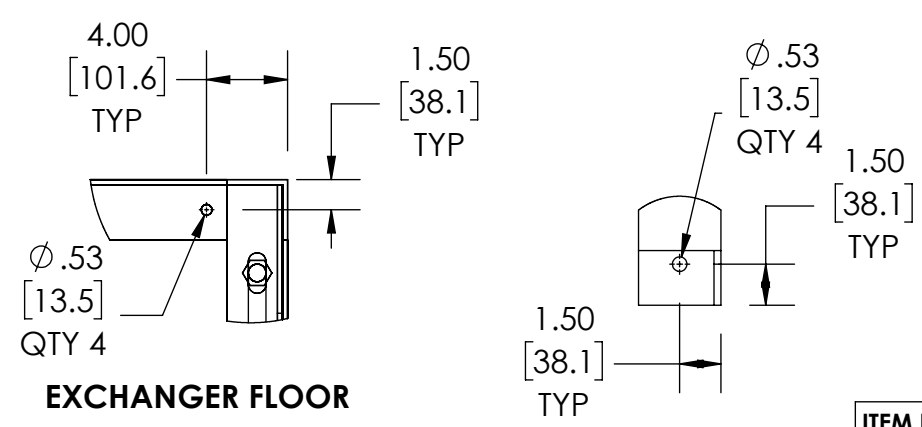
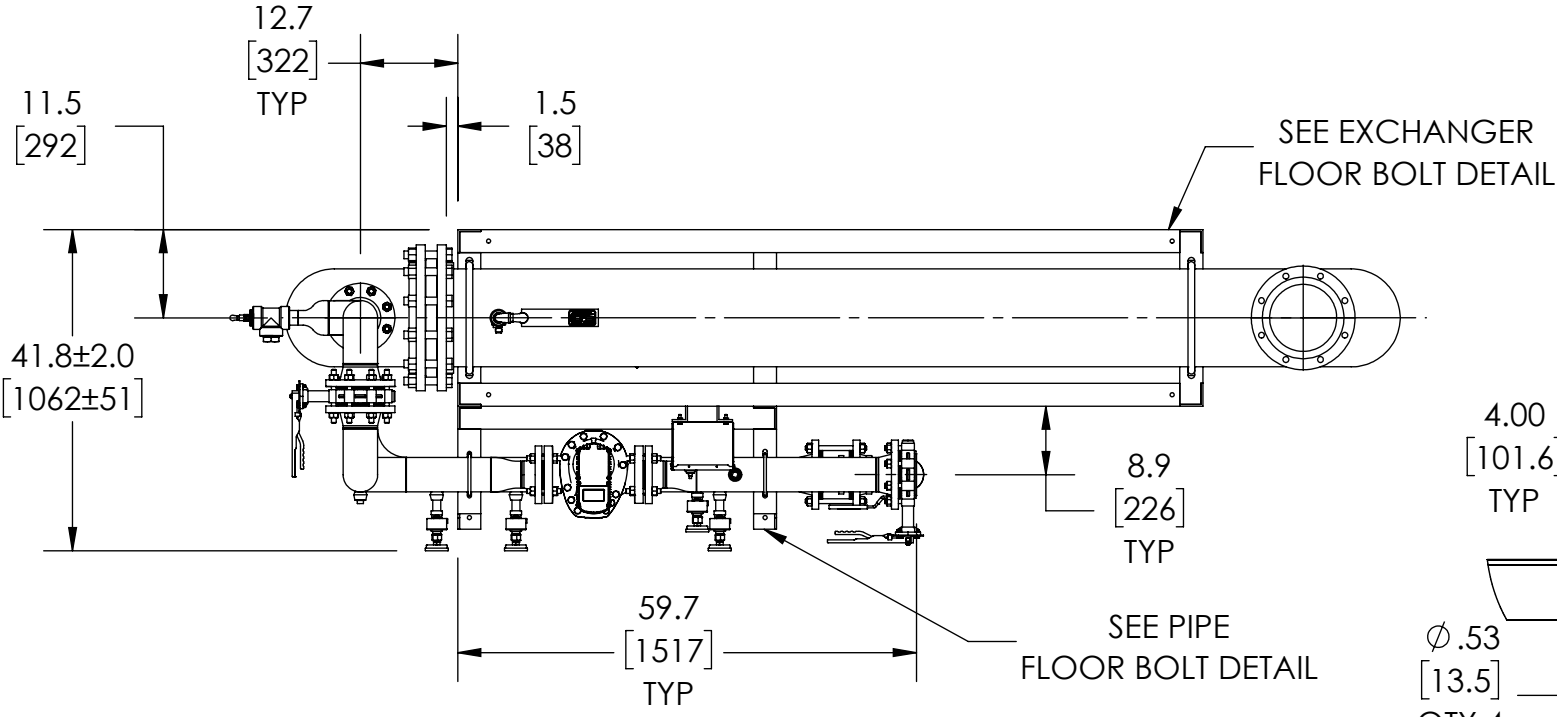
APPROVAL

BY: _____ DATE: _____

- APPROVED, PROCEED WITH FABRICATION
- APPROVED AS NOTED, PROCEED WITH FABRICATION IN ACCORDANCE WITH COMMENTS
- DISAPPROVED, DO NOT FABRICATE

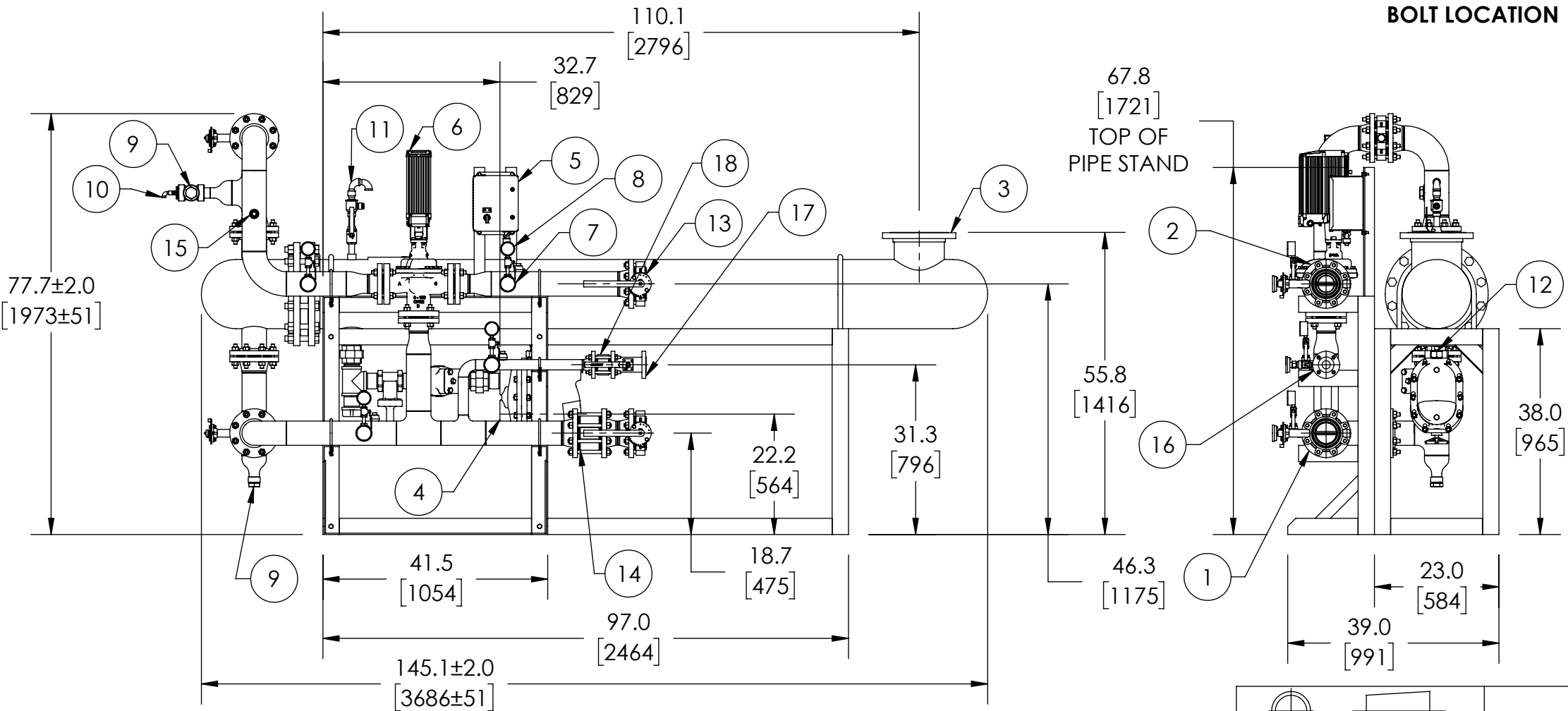


READITEMP



**EXCHANGER FLOOR
BOLT LOCATION**

**PIPING FLOOR
BOLT LOCATION**

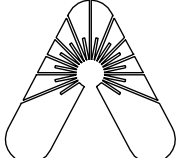


| ITEM NO. | DESCRIPTION | CONNECTION |
|----------|------------------------------|------------------------|
| 1 | COLD WATER INLET | 4" FLG ANSI 150 |
| 2 | MIXED OUTLET | 4" FLG ANSI 150 |
| 3 | STEAM INLET | 8" FLG ANSI 150 |
| 4 | CONDENSATE OUTLET | 2-1/2" NPT 50 KD10 F&T |
| 5 | ELECTRICAL PANEL | 120/240 VAC 1.8/.9A |
| 6 | E80WR | 3" FLG ANSI 150 |
| 7 | THERMOMETER (4) | 1/2" NPT |
| 8 | PRESSURE GAUGE (4) | 1/4" NPT |
| 9 | CIP CONNECTION (2) | 1-1/2" NPT |
| 10 | SRV (PRESSURE) PIPE TO DRAIN | 1/4" NPT |
| 11 | AIR VENT | 3/4" NPT |
| 12 | VACUUM BREAKER | 1/2" NPT |
| 13 | BUTTERFLY VALVE (4) | 4" FLG ANIS 150 |
| 14 | CHECK VALVE | 4" FLG ANSI 150 |
| 15 | INSTRUMENTATION PORT (4) | 3/4" NPT |
| 16 | RECIRC RETURN | 1-1/2" FLG ANSI 150 |
| 17 | BALL VALVE | 1-1/2" FLG ANSI 150 |
| 18 | CHECK VALVE | 1-1/2" FLG ANSI 150 |
| | ITEM | MATERIAL |
| | PIPING | 316 STAINLESS STEEL |
| | STAND | 304 STAINLESS STEEL |
| | EXCHANGER SHELL MATERIAL | CARBON STEEL |
| | EXCHANGER TUBE MATERIAL | COPPER |

NOTE(S):

1. ALL DIMENSIONS +/-1.0 [25] UNLESS OTHERWISE SHOWN.
2. EMECH AND POWER SUPPLY ARE PREWIRED TO PROVIDE A SINGLE ELECTRICAL LANDING POINT AT THE PANEL.

| | | |
|---|---------------|--------|
| DO NOT SCALE DRAWING TOLERANCES UNLESS OTHERWISE SPECIFIED | | |
| DIMENSIONING ENGLISH [mm] | | |
| FRACTIONAL ± 1/64 ANGULAR: ± 2 | | |
| DECIMAL | .XXXX ± .0005 | IN. MM |
| | .XXX ± .005 | .010 |
| | .XX ± .015 | .10 |
| | .X | .3 |


Armstrong[®]

| NAME | DATE |
|------|-----------|
| CFG | 5/18/2015 |

ARMSTRONG INTERNATIONAL
 Copyright © 2010 ARMSTRONG INTERNATIONAL, INC.
RT1230080R

| | |
|----------|--------------|
| MATERIAL | SHEET 1 OF 1 |
| REV | SALES |