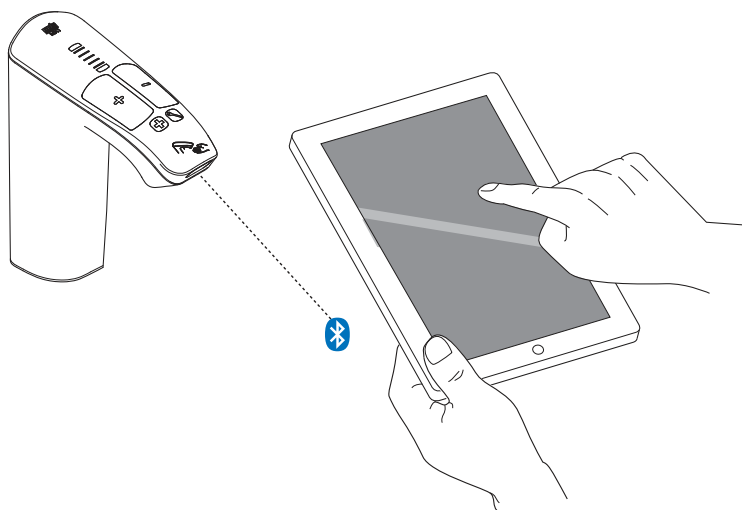


# Rada Digital Faucet User Guide



Please read and save these instructions

492-EN V2.1





# Introduction

Thank you for choosing the Rada Digital Faucet, from Armstrong International. The following User Guide will assist you in the following:

- Installation of the faucet
- Basic programming of the faucet using the Rada Digital Faucet AP1 iPad App

The Rada Digital faucet comes with the following parameters configured and is capable of being configured for multiple faucet applications by adjusting various parameters within the APP. This quick start guide reflects only a small portion of the faucets capabilities and is not intended to replace the full IOM.

## Initial Settings:

- Faucet Operation: On/Off
- Default Temperature: 103°F
- Temperature Range: 99°F–106°F
- Full Cold: Disabled
- Run On Time: 5 Second
- Default PIN: 5945



The [RADA AP1 iPad App](https://apps.apple.com/us/app/rada-ap1/id1107602816) is freely available from the Apple App store is required for programming the Rada Digital Faucet. The App is only compatible with Apple iPad. It is not compatible with Apple iPhones or Android devices: <https://apps.apple.com/us/app/rada-ap1/id1107602816>



Download the complete [Rada Digital Faucet Deck Mount IOM](https://www.armstronginternational.com/sites/default/files/resources/files/495-EN.pdf) from Armstrong: <https://www.armstronginternational.com/sites/default/files/resources/files/495-EN.pdf>

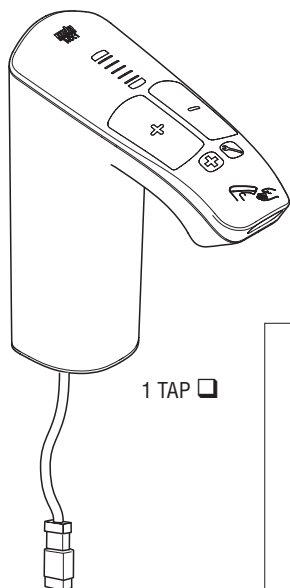


Quick Reference Guides are also available from the Armstrong website: <https://www.armstronginternational.com/products-and-systems/hot-water-people/water-temperature-controls/rada-digital-faucets>

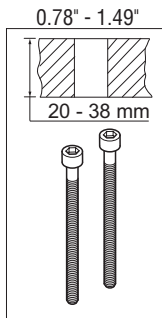
*More Informational is available from your local Armstrong Representative or from the Armstrong Hot Water Group*

# Pack Contents

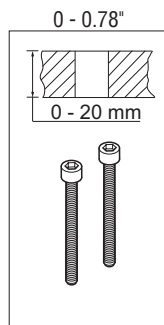
## MX1-20, MX1-20NT, MX1-40



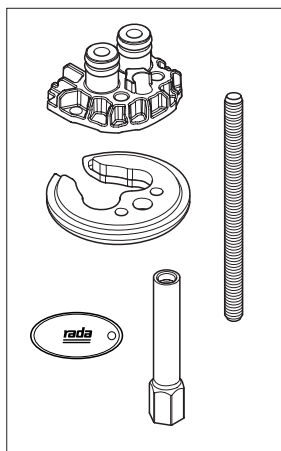
1 TAP ☐



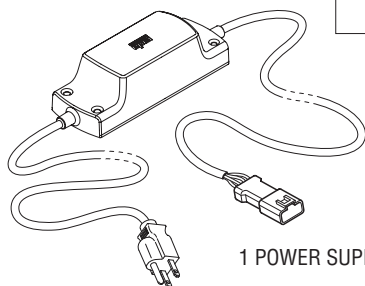
2 X FIXING  
SCREWS ☐



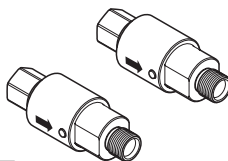
2 X FIXING  
SCREWS ☐



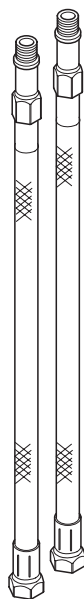
1 TAP FIXING KIT ☐



1 POWER SUPPLY ☐



2 FLOW REGULATOR/  
FILTER ASSEMBLIES ☐



2 FLEXIBLE TAILS ☐

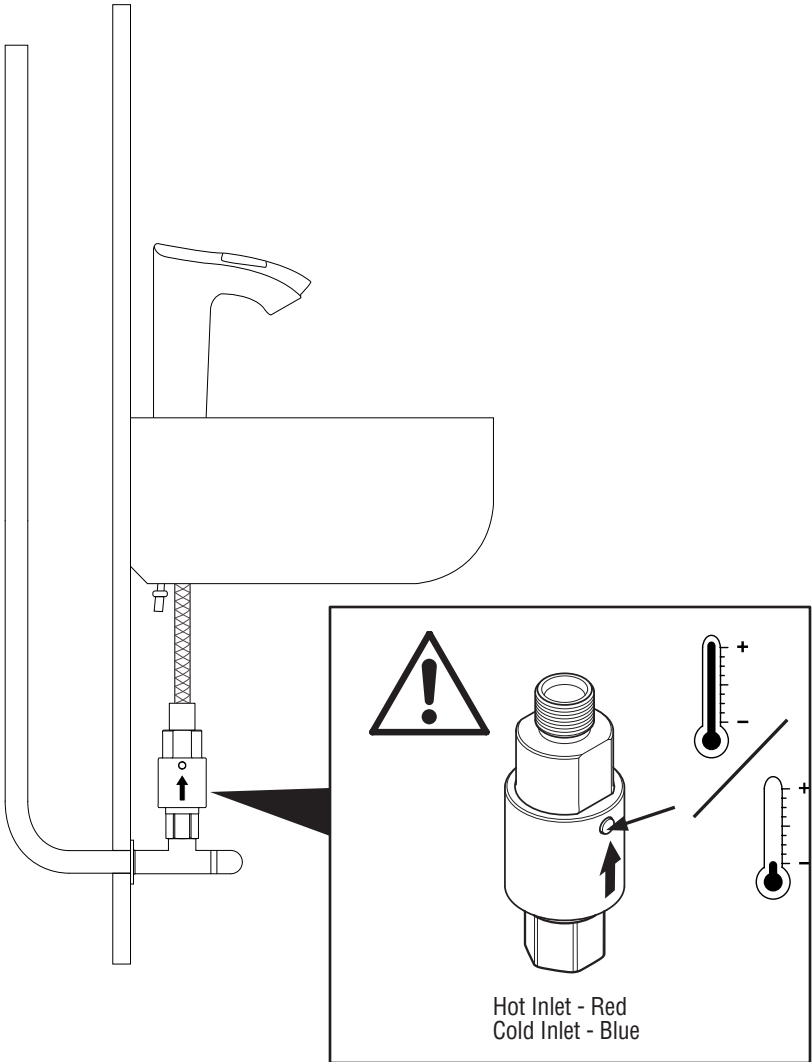
# Installation Requirements

The Rada MX1 basin mounted tap can be installed with either flexible tails or rigid pipes. The filter flow regulator unit must be fitted.

Hot – Red Dot, Cold – Blue Dot.

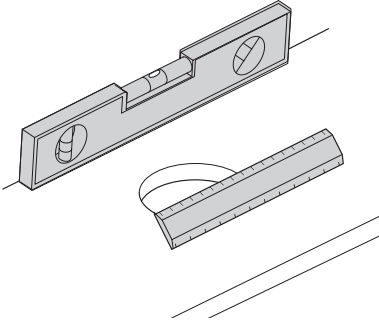
The arrow indicates flow direction.

The unit must be accessible for service.



# Installation

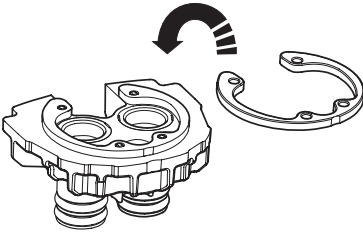
1



Measure the size of the basin hole.

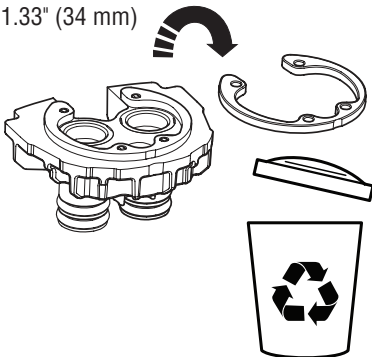
2

> 1.33" (34 mm)



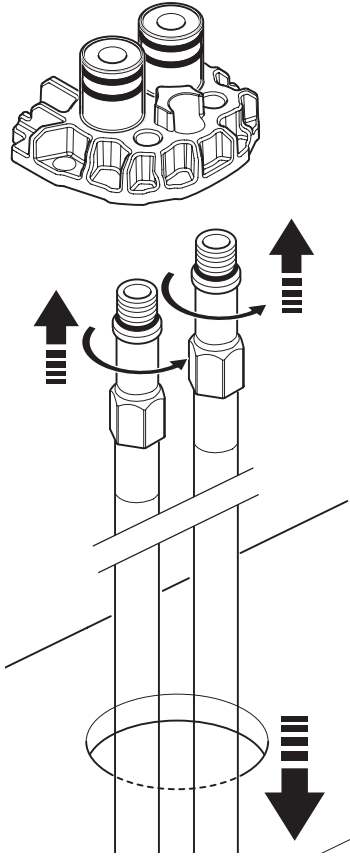
If the basin hole is greater than 1.33" (34 mm)  
fit the plastic spacer.

< 1.33" (34 mm)



If the basin hole is smaller than 1.33" (34 mm)  
discard the plastic spacer.

3

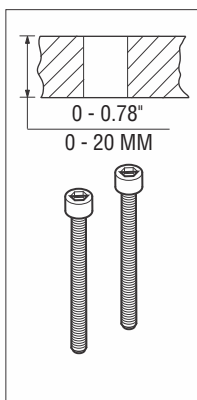
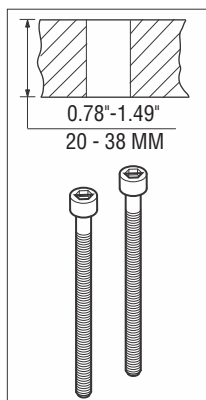
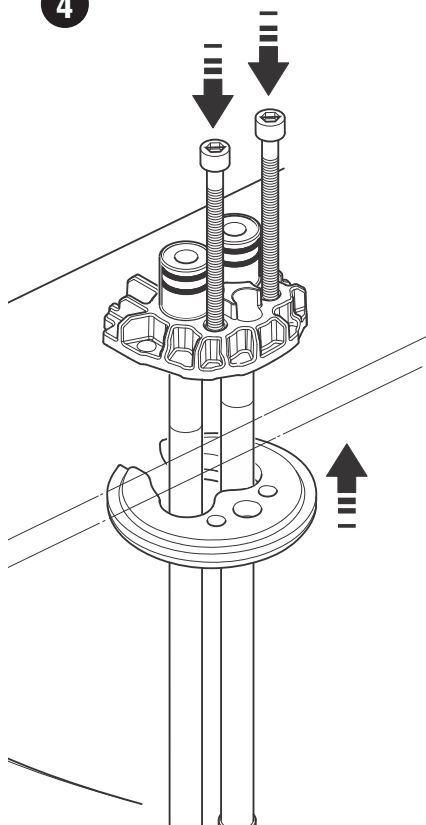


Install the flexible tails or rigid  
pipes.

NOTE: If Using 4" (Armstrong  
Part No. D126262) or 8"  
(Armstrong Part No. D126263 )  
Cover plate: please remove the  
plastic spacer to assure proper fit

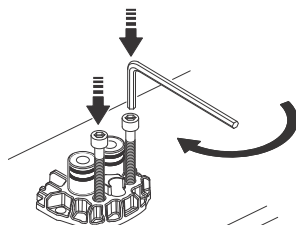
## Installation - continued

4



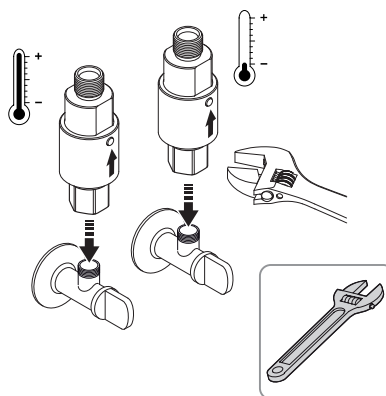
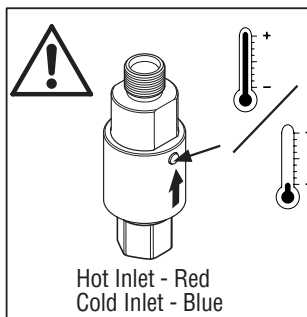
Select the screws to suit the thickness of the washbasin.

5



Tighten the screws using a 1/8" (3 mm) hexagonal wrench

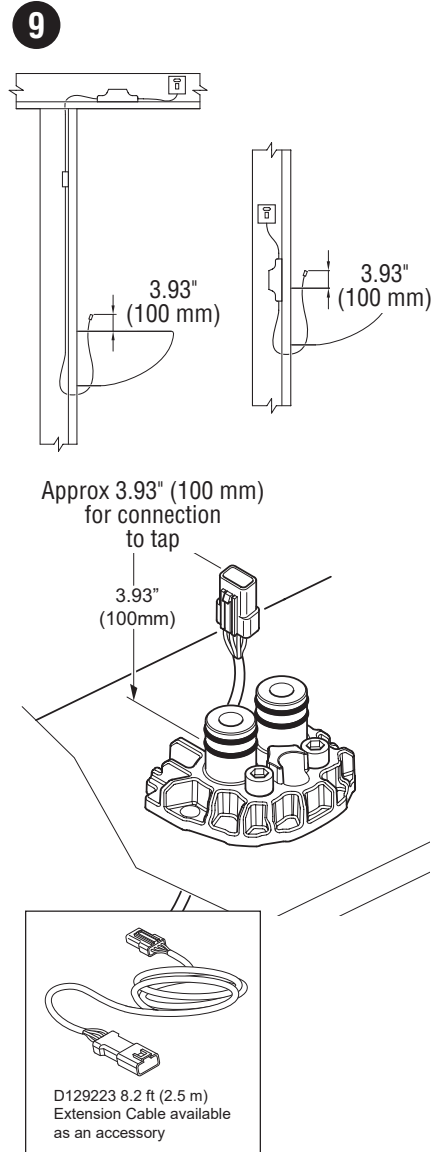
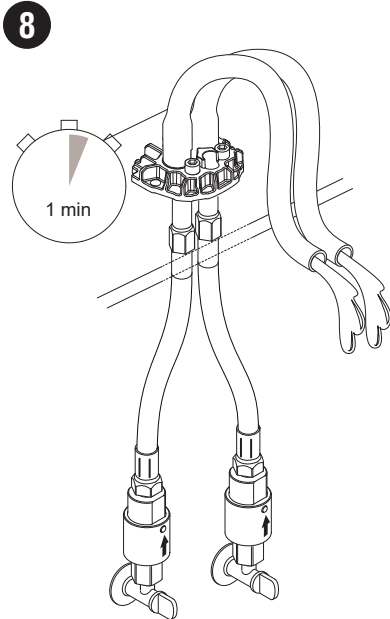
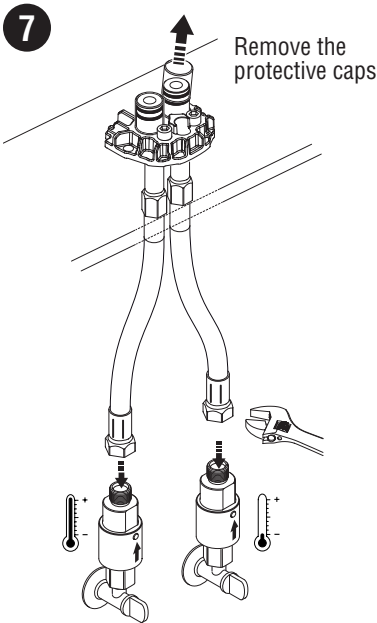
6



**DO NOT** use jointing paste when making plumbing connections.

**Note:** Make sure that the Filter / flow regulator housings are installed in the correct orientation. An arrow indicates the direction of water flow.

# Installation - continued

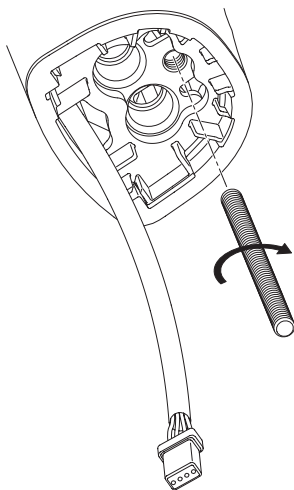


**Note:** Make sure that you install the PSU (Power Supply Unit) in an area that you can access easily for servicing and maintenance purposes. Ensure connection to tap is dry and latch engaged on assembly.

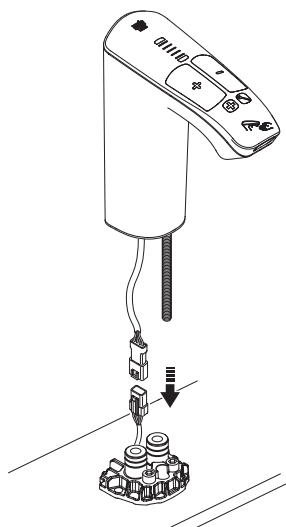


## Installation - continued

10

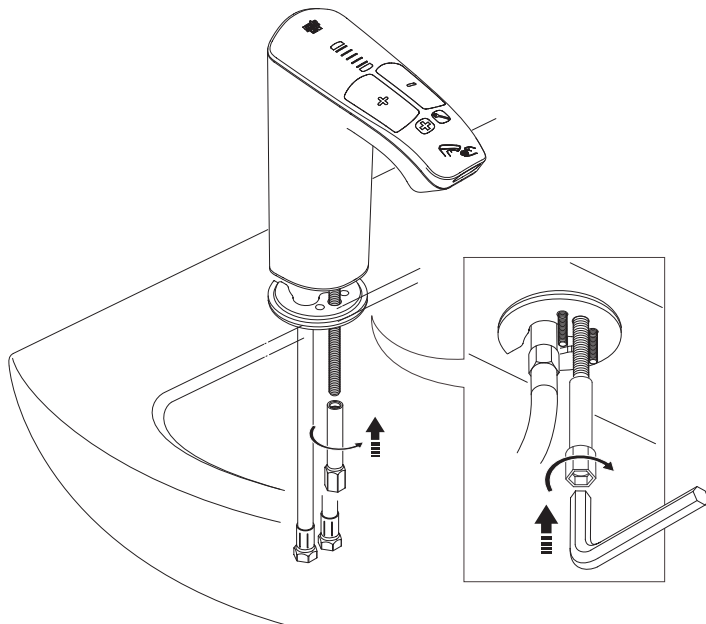


11



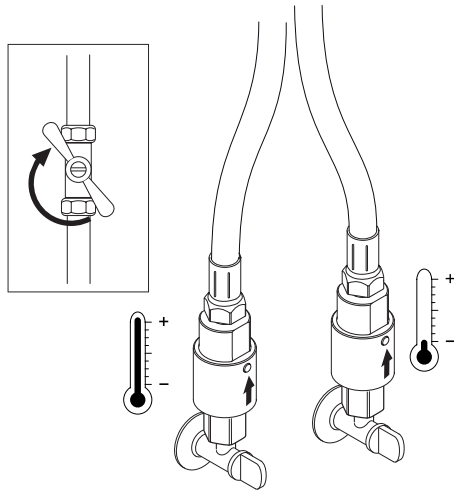
**Note:** Ensure connection is dry and latch engaged on assembly.

12



Tighten the nut using a 7/23" (6 mm) hexagonal wrench.

The Rada MX1 basin mounted tap will operate to factory settings when first installed.  
Download the "RADA AP1" from the Apple App Store and follow the on-screen instructions.



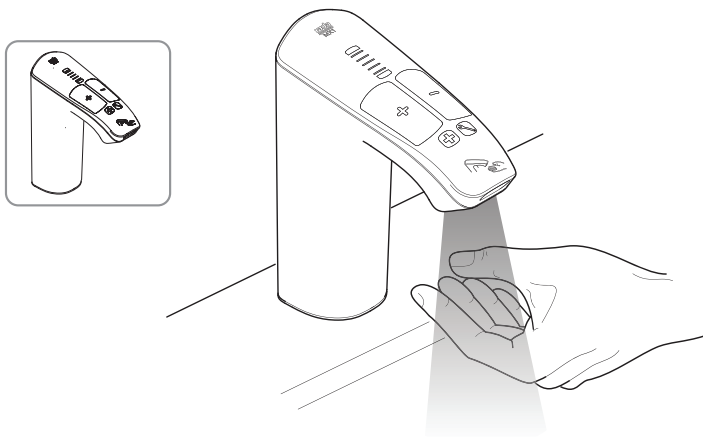
Open hot and cold water supply and check for leaks.

**Note: Run the tap for 30 seconds in order for self calibration to take place.**

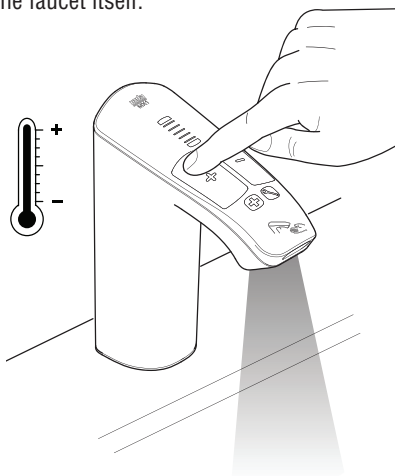
# Basic Faucet Operation

The Rada Digital Faucet operates completely touch free. Activate the faucet by placing your hands under or near the faucet tap. To adjust the temperature place your hand near the hot and cold indicators either above them or next to them. The water temperature will increase/decrease in steps within the programmed range.

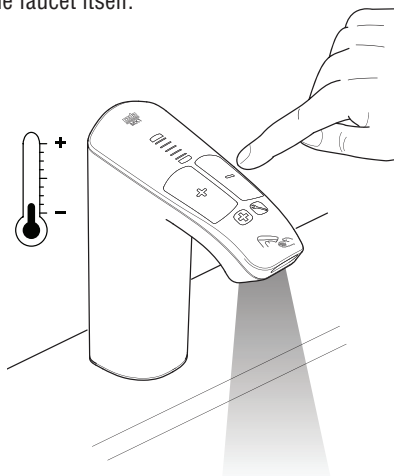
**Note:** When the faucet senses your presence, you will see LED bars in the center light up indicating the faucet sees you and that water is about to be dispensed safely. Water flows from the spout slowly to prevent scalding and is a normal part of the safe start operation.



To increase the water temperature place your hand above or next to the Red + Indicator. It is not necessary to make physical contact with the faucet itself.



To reduce the water temperature place your hand above or next to the Blue - Indicator. It is not necessary to make physical contact with the faucet itself.



# Basic Setup with Rada AP1 APP

To perform such functions as thermal disinfection and duty flush it is essential that the time and date are programmed on the tap accurately. Failure to do so will result in the datalogging function being compromised.

This App Quick Start Guide is designed to instruct the user to initially set up the tap with time and date, a tap name, network address and a PIN. These parameters can all be set up without altering the factory setting functionality of the tap.

Download “**RADA AP1**” via the Apple App store onto your compatible device.

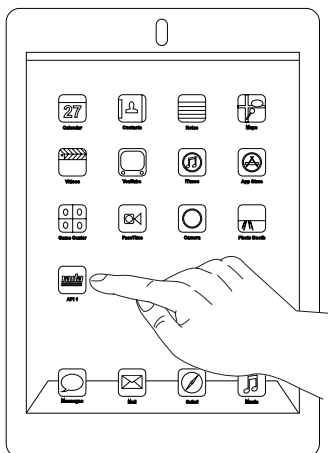
**Note: This App is designed to operate on Apple iPad. Not all Apple devices are compatible, please ensure you are using up to date Apple Operating System.**

Rada endeavors to ensure that the Rada App is compatible with the latest versions of Apple Operating Systems. If your device is not capable of running the latest Operating System version, the Rada App may NOT be compatible with your device.

**Note: Every Rada tap is factory set with the default PIN 5945. This default PIN allows the user to alter factory settings, e.g. maximum blend temperature or tap run on time and to download data from duty flush and thermal disinfection data logs. The Rada App allows the user to set an individual PIN for every device. Once a PIN has been altered it is the user's responsibility to remember or record this PIN for future use. Failure to enter a valid PIN will result in the tap being locked and unable to download any data or alter subsequent settings.**

The memory within the Intelligent Care Tap has the capacity to store 365 Duty Flush logs, as well as 52 Thermal Disinfections. However, we would not recommend waiting until this many records have been logged, before undertaking a download. The Flushing Log may identify 'system related' issues, which result in a “Fail” (eg failure to reach the programmed parameters etc). Our recommendation would be to download the Flushing data on a regular basis.

## Launch the Rada App



## To Place the Faucet into Service Mode:

Place the faucet into service mode by placing the Rada Magnetic Key (included with every faucet) (or any magnet) near the front of the tap as shown. The faucet is in service mode when the Spanner Wrench is Red.



# Limited Warranty and Remedy

Armstrong International, Inc. or the Armstrong division that sold the product ("Armstrong") warrants to the original user of those products supplied by it and used in the service and in the manner for which they are intended, that such products shall be free from defects in material and workmanship for a period of one (1) year from the date of installation, but not longer than 15 months from the date of shipment from the factory, [unless a Special Warranty Period applies, as listed below]. This warranty does not extend to any product that has been subject to misuse, neglect or alteration after shipment from the Armstrong factory. Except as may be expressly provided in a written agreement between Armstrong and the user, which is signed by both parties, Armstrong **DOES NOT MAKE ANY OTHER REPRESENTATIONS OR WARRANTIES, EXPRESS OR IMPLIED, INCLUDING, BUT NOT LIMITED TO, ANY IMPLIED WARRANTY OF MERCHANTABILITY OR ANY IMPLIED WARRANTY OF FITNESS FOR A PARTICULAR PURPOSE.**

The sole and exclusive remedy with respect to the above limited warranty or with respect to any other claim relating to the products or to defects or any condition or use of the products supplied by Armstrong, however caused, and whether such claim is based upon warranty, contract, negligence, strict liability, or any other basis or theory, is limited to Armstrong's repair or replacement of the part or product, excluding any labor or any other cost to remove or install said part or product, or at Armstrong's option, to repayment of the purchase price.

As a condition of enforcing any rights or remedies relating to Armstrong products, notice of any warranty or other claim relating to the products must be given in writing to Armstrong: (i) within 30 days of last day of the applicable warranty period, or (ii) within 30 days of the date of the manifestation of the condition or occurrence giving rise to the claim, whichever is earlier. **IN NO EVENT SHALL ARMSTRONG BE LIABLE FOR SPECIAL, DIRECT, INDIRECT, INCIDENTAL OR CONSEQUENTIAL DAMAGES, INCLUDING, BUT NOT LIMITED TO, LOSS OF USE OR PROFITS OR INTERRUPTION OF BUSINESS.** The Limited Warranty and Remedy terms herein apply notwithstanding any contrary terms in any purchase order or form submitted or issued by any user, purchaser, or third party and all such contrary terms shall be deemed rejected by Armstrong.

Special Warranty Periods are as Follows:

Pre-packaged skid shall have a 2 year warranty from date of installation but not longer than 27 months from date of shipment.

DRV shall have a 5 year all components parts warranty from date of shipment other than preventative maintenance service items which include batteries and all 'wetted' O-Rings/Seals.

The heat exchanger shall have a 1 year warranty from date of installation but not longer than 18 months from date of manufacturing.

Rada Digital Faucets shall have a 3 year all mechanical and electrical parts and a 1 year all finish parts warranty from date of shipment.

# Notes

# Notes

*Rada is a registered trade mark of  
Kohler Mira Limited.  
The company reserves the right to alter  
product specifications without notice.*



***rada***



**Armstrong International**

North America • Latin America • India • Europe / Middle East / Africa • China • Pacific Rim  
[armstronginternational.com](http://armstronginternational.com)

492-EN V2.1  
1428545-AL2-B

© Armstrong International, Inc.