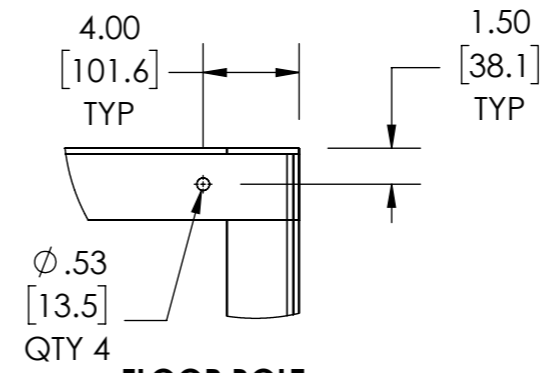


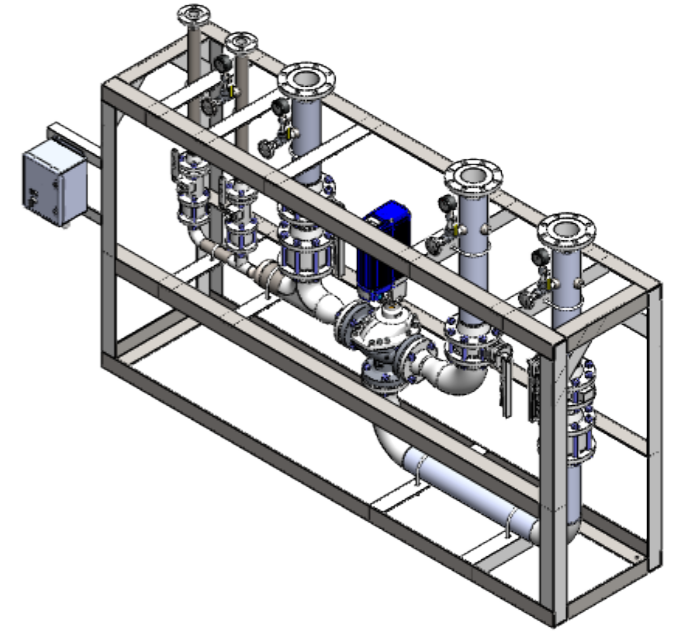
APPROVAL

BY: _____ DATE: _____

- APPROVED, PROCEED WITH FABRICATION
- APPROVED AS NOTED, PROCEED WITH FABRICATION IN ACCORDANCE WITH COMMENTS
- DISAPPROVED, DO NOT FABRICATE

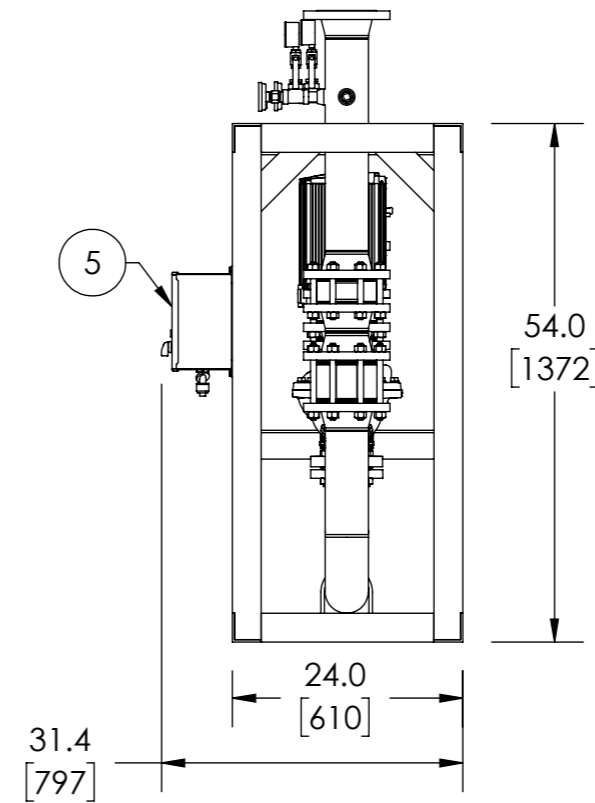
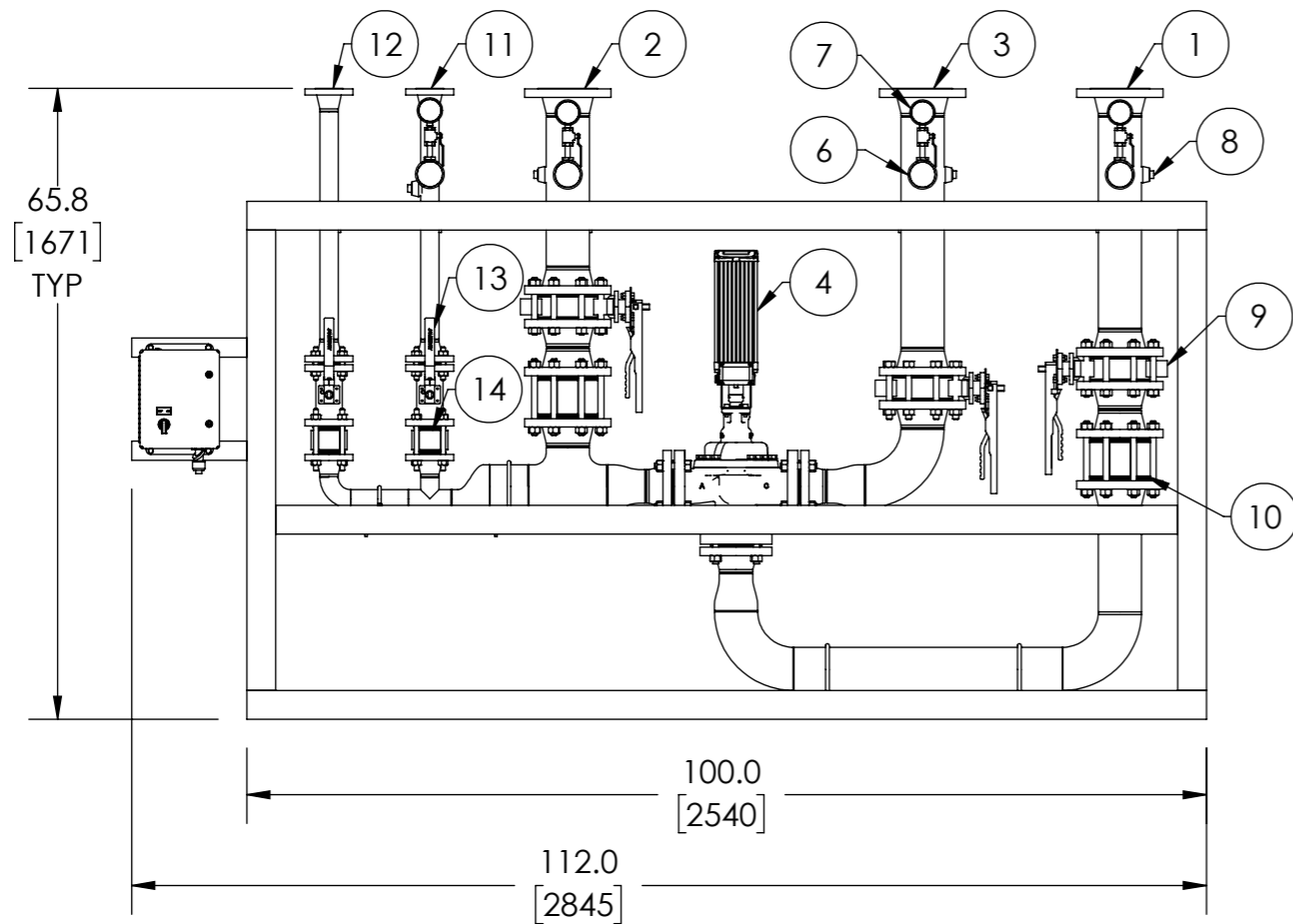


FLOOR BOLT LOCATION



INDUSTRIAL MIXING CENTER

ITEM NO.	DESCRIPTION	CONNECTION
1	HOT WATER INLET	4" FLG ANSI 150
2	COLD WATER INLET	4" FLG ANSI 150
3	MIXED OUTLET	4" FLG ANSI 150
4	E80WR	3" FLG ANSI 150
5	ELECTRICAL PANEL	120/240 VAC 1.8/.9A
6	THERMOMETER (4)	1/2" NPT
7	PRESSURE GAUGE (4)	1/4" NPT
8	INSTRUMENTATION EXPANSION PORT (4)	3/4" NPT
9	BUTTERFLY VALVE (3)	4" FLG ANSI 150
10	CHECK VALVE (2)	4" FLG ANSI 150
11	RECIRC RETURN	1-1/2" FLG ANSI 150
12	RETURN TO HEATER	1-1/2" FLG ANSI 150
13	BALL VALVE (2)	1-1/2" FLG ANSI 150
14	CHECK VALVE (2)	1-1/2" FLG ANSI 150
	ITEM	MATERIAL
	PIPING	316 STAINLESS STEEL
	STAND	304 STAINLESS STEEL



NOTE(S):

1. ALL DIMENSIONS +/-1.0 [25] UNLESS OTHERWISE SHOWN.
2. EMECH AND POWER SUPPLY ARE PREWIRED TO PROVIDE A SINGLE ELECTRICAL LANDING POINT AT THE PANEL.

DO NOT SCALE DRAWING TOLERANCES UNLESS OTHERWISE SPECIFIED		
DIMENSIONING ENGLISH [mm]		
FRACTIONAL ± 1/64 ANGULAR: ± 2		
DECIMAL	.XXXX ± .0005	IN. MM
	.XXX ± .005	.010
	.XX ± .015	.10
	.X	.3

Armstrong

NAME	DATE
CFG	5/18/2015

ARMSTRONG INTERNATIONAL
Copyright © 2010 ARMSTRONG INTERNATIONAL, INC.

IMC80R

MATERIAL	SHEET 1 OF 1
REV	SALES