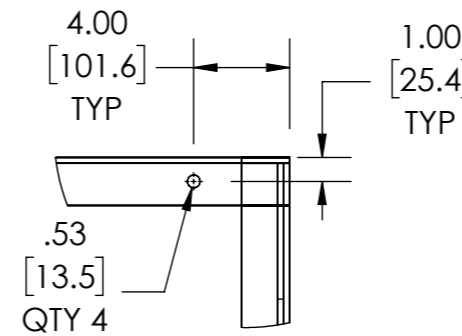
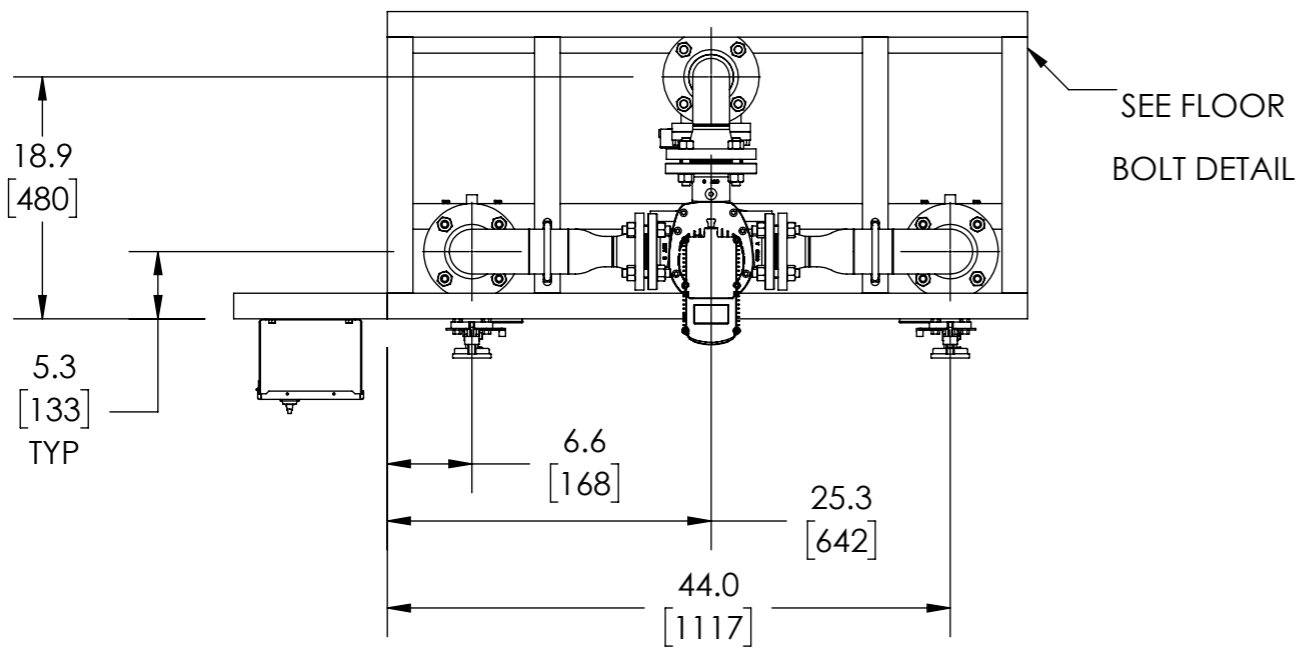


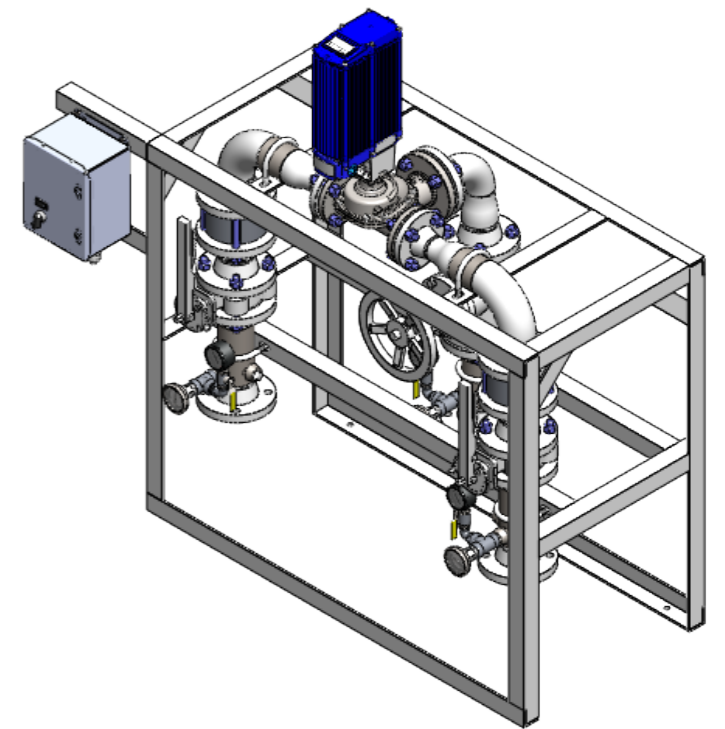
# APPROVAL

BY: \_\_\_\_\_ DATE: \_\_\_\_\_

- APPROVED, PROCEED WITH FABRICATION
- APPROVED AS NOTED, PROCEED WITH FABRICATION IN ACCORDANCE WITH COMMENTS
- DISAPPROVED, DO NOT FABRICATE

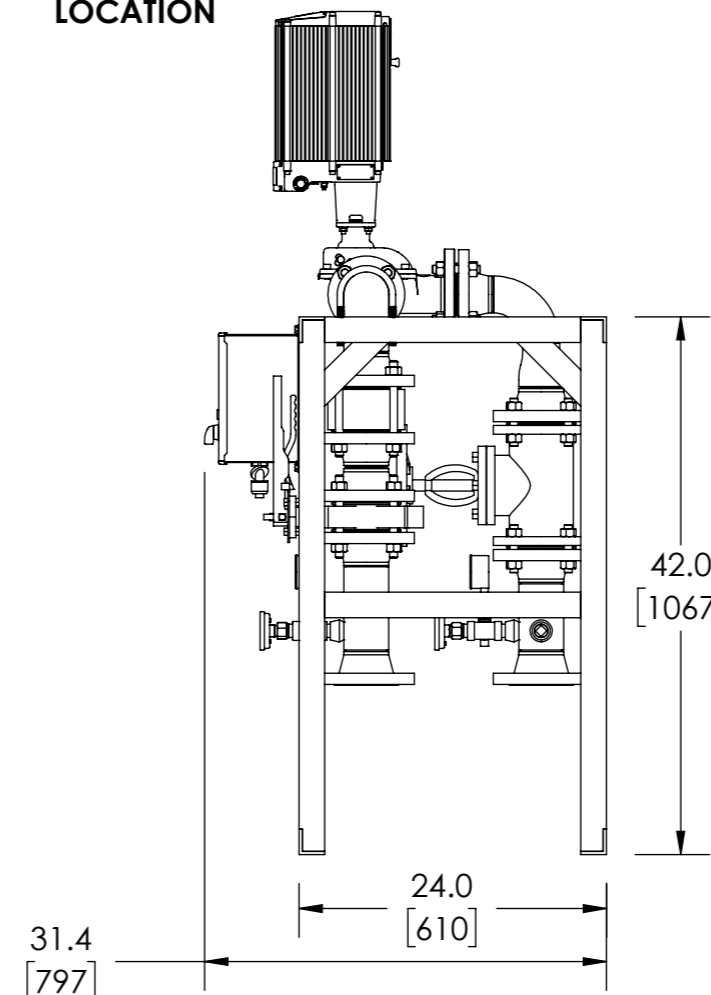
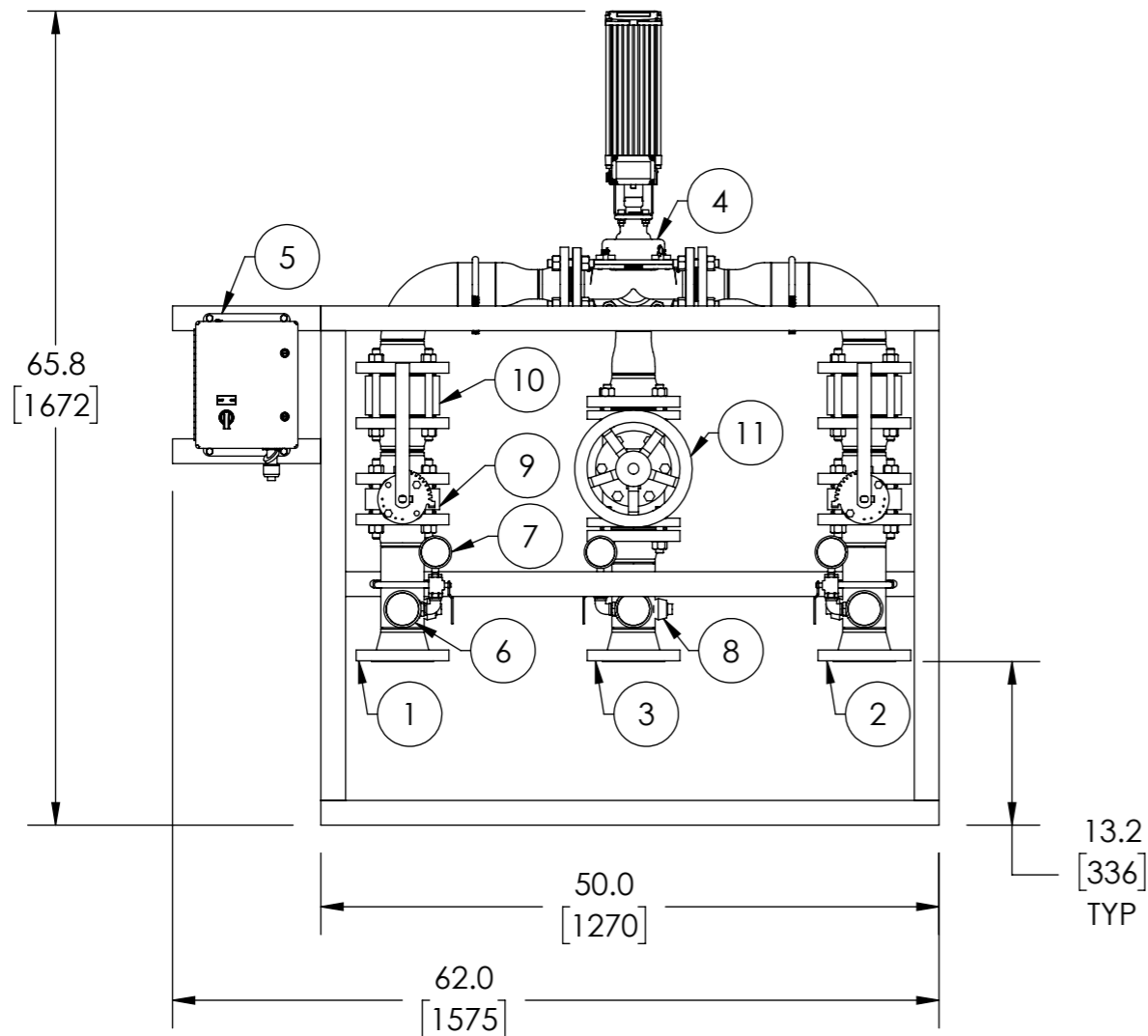


FLOOR BOLT LOCATION



## INDUSTRIAL MIXING CENTER

ITEM NO.	DESCRIPTION	CONNECTION
1	HOT WATER INLET	3" FLG ANSI 150
2	COLD WATER INLET	3" FLG ANSI 150
3	MIXED OUTLET	3" FLG ANSI 150
4	E50WR	2" FLG ANSI 150
5	ELECTRICAL PANEL	120/240 VAC 1.8/.9A
6	THERMOMETER (3)	1/2" NPT
7	PRESSURE GAUGE (3)	1/4" NPT
8	INSTRUMENTATION EXPANSION PORT (3)	3/4" NPT
9	BUTTERFLY VALVE (2)	3" FLG ANSI 150
10	CHECK VALVE (2)	3" FLG ANSI 150
11	GLOBE VALVE	3" FLG ANSI 150
<b>ITEM</b>		<b>MATERIAL</b>
PIPING		316 STAINLESS STEEL
STAND		304 STAINLESS STEEL



NOTE(S):

- ALL DIMENSIONS +/-1.0 [25] UNLESS OTHERWISE SHOWN.
- EMECH AND POWER SUPPLY ARE PREWIRED TO PROVIDE A SINGLE ELECTRICAL LANDING POINT AT THE PANEL.

DO NOT SCALE DRAWING TOLERANCES UNLESS OTHERWISE SPECIFIED		
DIMENSIONING ENGLISH [mm]		
FRACTIONAL ± 1/64 ANGULAR: ± 2		
DECIMAL	.XXX ± .0005	MM
	.XX ± .015	.10
	.X	.3

Armstrong®

NAME	DATE
CFG	5/18/2015
DRAWN	
RELEASED	

ARMSTRONG INTERNATIONAL  
Copyright © 2010 ARMSTRONG INTERNATIONAL, INC.

IMC50GD

MATERIAL	SHEET 1 OF 1
REV	SALES