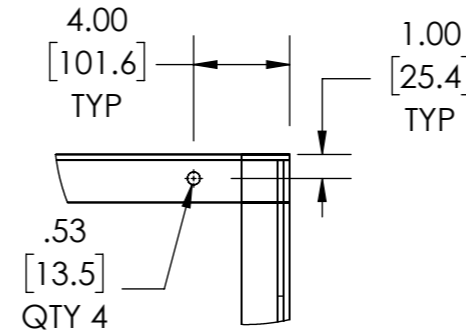
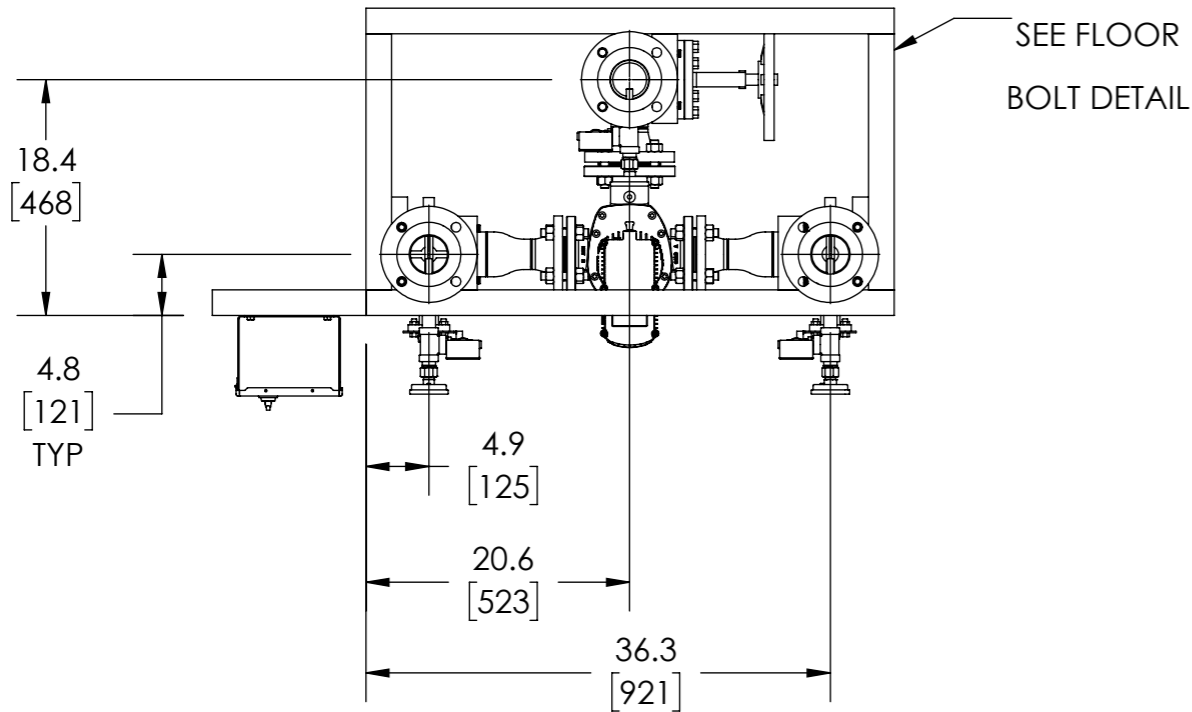
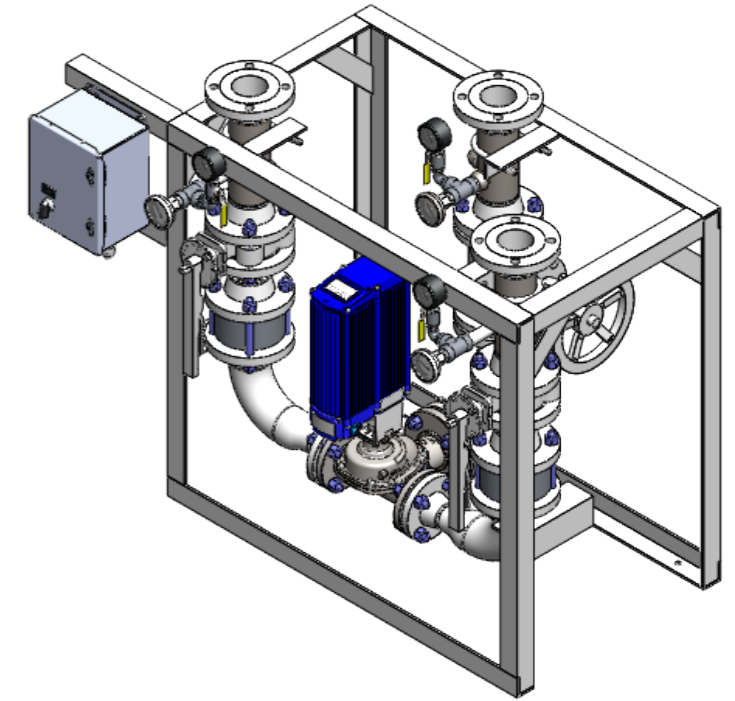


APPROVAL

BY: _____ DATE: _____

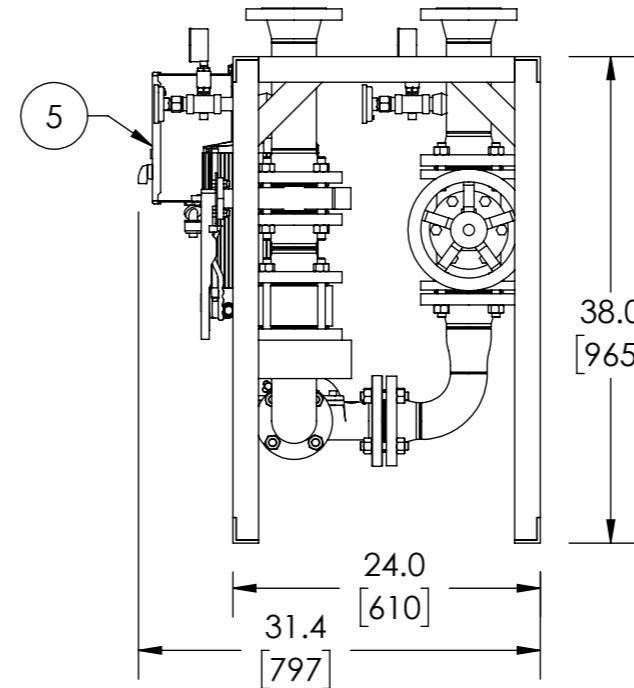
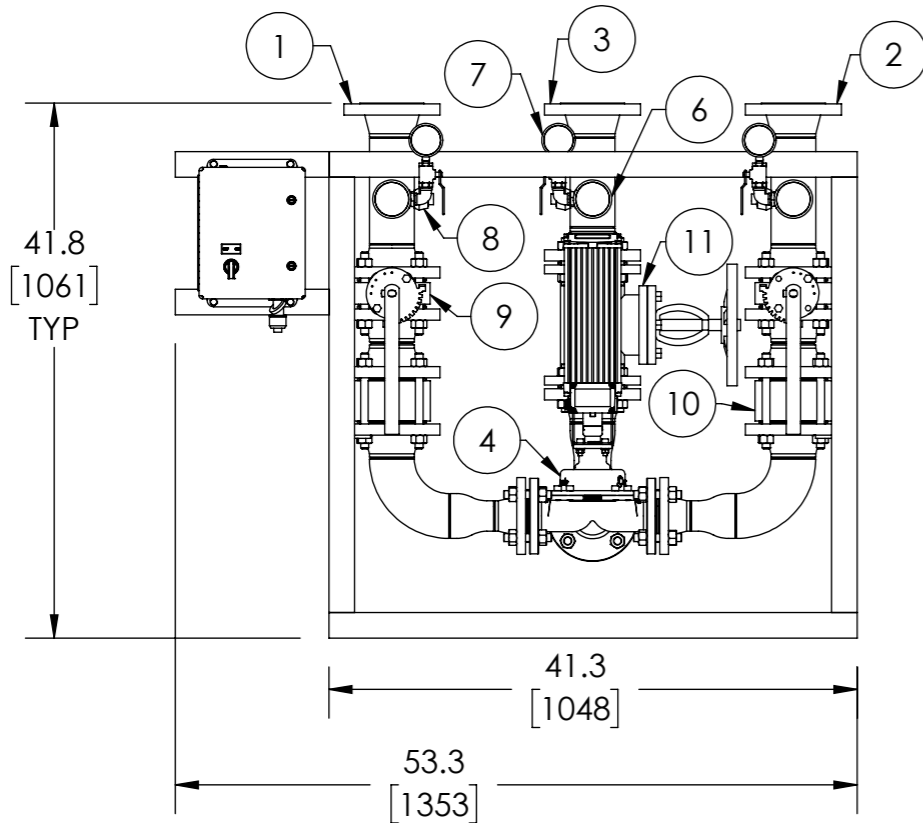
- APPROVED, PROCEED WITH FABRICATION
- APPROVED AS NOTED, PROCEED WITH FABRICATION IN ACCORDANCE WITH COMMENTS
- DISAPPROVED, DO NOT FABRICATE



FLOOR BOLT LOCATION

INDUSTRIAL MIXING CENTER

ITEM NO.	DESCRIPTION	CONNECTION
1	HOT WATER INLET	3" FLG ANSI 150
2	COLD WATER INLET	3" FLG ANSI 150
3	MIXED OUTLET	3" FLG ANSI 150
4	E50WR	2" FLG ANSI 150
5	ELECTRICAL PANEL	120/240 VAC 1.8/.9A
6	THERMOMETER (3)	1/2" NPT
7	PRESSURE GAUGE (3)	1/4" NPT
8	INSTRUMENTATION EXPANSION PORT (3)	3/4" NPT
9	BUTTERFLY VALVE (2)	3" FLG ANSI 150
10	CHECK VALVE (2)	3" FLG ANSI 150
11	GLOBE VALVE	3" FLG ANSI 150
	ITEM	MATERIAL
	PIPING	316 STAINLESS STEEL
	STAND	304 STAINLESS STEEL



- NOTE(S):
- ALL DIMENSIONS +/-1.0 [25] UNLESS OTHERWISE SHOWN.
 - EMECH AND POWER SUPPLY ARE PREWIRED TO PROVIDE A SINGLE ELECTRICAL LANDING POINT AT THE PANEL.

DO NOT SCALE DRAWING
TOLERANCES UNLESS OTHERWISE SPECIFIED
DIMENSIONING ENGLISH [mm]
FRACTIONAL ± 1/64
ANGULAR: ± 2
DECIMAL .XXXX ± .0005
.XXX ± .005 .010
.XX ± .015 .10
.X ± .3

NAME	DATE
CFG	5/18/2015

DRAWN
RELEASED

ARMSTRONG INTERNATIONAL
Copyright © 2010 ARMSTRONG INTERNATIONAL, INC.

IMC50G

MATERIAL

REV SALES

SHEET 1 OF 1