

# DIMENSIONS & DATA CERTIFIED FOR:

Representative:

Order:

Customer:

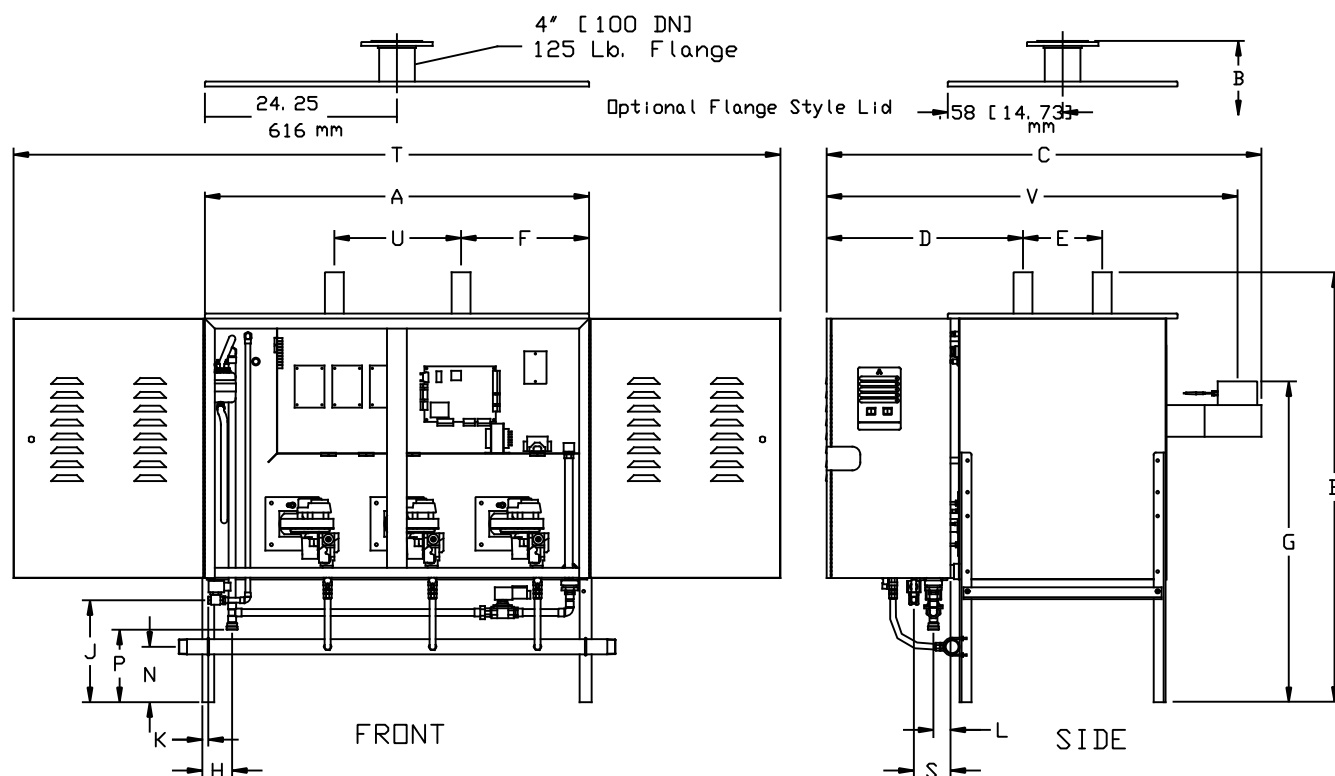
Order:

Project:

Requirements:

By:

Date:




SHOWN WITH CABINET DOOR OPEN

DIMENSIONS	in	mm
A - Tank Width	48-1/2	1232
B - Overall Height	54-3/16	1376
C - Overall Width	54-7/8	1394
D - Steam Outlet to End of Cabinet	24-13/16	630
E - Steam Outlet Spacing	10	254
F - Steam Outlet to Edge of Tank	16-1/8	410
G - Vent Outlet to Floor	40-1/2	1029
H - Drain Outlet to Edge of Tank	3-3/4	95
J - Water Inlet to Floor	12-7/8	327
K - Water Inlet to edge of Tank	3/4	20
L - Drain Outlet to Edge of Tank	2-1/8	54
N - Gas Inlet to Floor	7	178
P - Drain Outlet to Floor	9-1/8	232
S - Water Inlet to Edge of Tank	4-5/8	117
T - Cabinet Opening Clearance	96-13/16	2459
U - Steam Outlet Spacing	16	406
V - Vent Outlet to Front of Cabinet	51-7/8	1317
Water Inlet	3/8" NPT	10
Drain Connection	3/4"	20
Gas Inlet	1-1/2 NPT	40
Vent Size	5"	127
Steam Outlets	2-3/8" OD / 4" Flg.	

MATERIAL LIST	
Cabinet/Finish	16 GA. Stl./Powder Coated Epoxy Enamel
Tank/Heat Exchanger	304 Stn. Stl.
* Ionic Bed Module	Inert Fiber
* Ionic Bed Frame	304 Stn. Stl.
Hose Cuffs	EPDM Rubber
Dispersion Tube	18-8 Stn. Stl.
Tank Gasket	Closed Cell Silicone
Insulation	Foiled Fiberglass

\* Not Used In DI/RD Applications

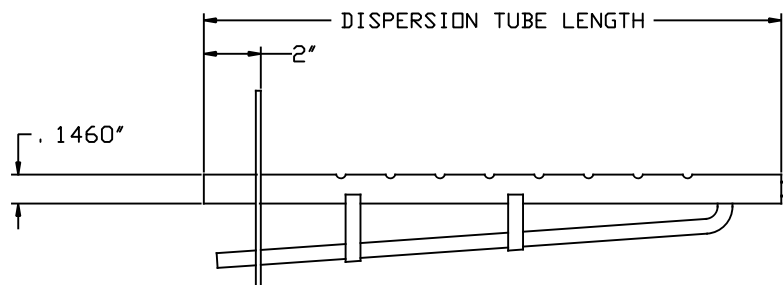


Armstrong International, Inc.  
Three Rivers Division  
Three Rivers, MI 49093  
Armstrong (269) 273-1415 Fax(269) 273-9500  
Posted on Armstrong's homepage [www.armstrong-intl.com](http://www.armstrong-intl.com)

Product	CD No.	Date
GAS FIRED HUMIDICLEAN GFH-450	1255	6/29/06
	Sht. 1	Rev. C

## Selection Proper Steam Dispersion Tube

Steam Disp. Tube Model No.	Steam Disp. Tube Length		Duct Width				Weight	
			Min.		Max.			
	in	mm	in	mm	in	mm	lb	kg
DL-1	12	304	11	279	16	406	3	1. 4
DL-1. 5	18	457	17	432	22	559	3	1. 4
DL-2	24	609	23	584	34	864	4	2
DL-3	36	914	35	889	46	1168	6	3
DL-4	48	1219	47	1194	58	1473	8	3. 6
DL-5	60	1524	59	1499	70	1778	9	4
DL-6	72	1829	71	1803	82	2030	10	4. 5
DL-7	84	2133	83	2108	94	2388	11	5
DL-8	96	2438	95	2413	106	2693	12	5. 5
DL-9	108	2743	107	2718	118	2998	13	6
DL-10	120	3048	119	3023	130	3302	14	6. 4



### Capacities for Natural Gas

Model Number	Steam Capacity		Max. Input
	lb/hr	kg/hr	btu/hr
GFH-450/GFH-450DI	475	215	630,000

### Capacities for Propane

Model Number	Steam Capacity		Max. Input
	lb/hr	kg/hr	btu/hr
GFH-450/GFH-450DI	465	211	600,000

### Standard Package Includes

Humidifier with Legs
Hose Cuffs & Hose Clamps
0-10 Vdc Room or Duct Humidistat

### Options

<input type="checkbox"/>	Dwyer Duct Pressure Switch
<input type="checkbox"/>	Humidistat: High Limit ON/OFF
<input type="checkbox"/>	Humidistat: High Limit MODULATION
<input type="checkbox"/>	Temp-R-Drain
<input type="checkbox"/>	Fan Package: Ehf-III (2 Req'd)
<input type="checkbox"/>	Tank Enclosure
<input type="checkbox"/>	Insulation Package
<input type="checkbox"/>	Natural Gas
<input type="checkbox"/>	Propane Gas

### Weights:

Dry Wt. 541 lbs [246 kgs]  
 Wet Wt. 1670 lbs [759 kgs]  
 Enclosure Wt. 74 lbs [34 kgs]  
 Shipping Wt. 700 lbs [318 kgs]



Armstrong International, Inc.  
 Three Rivers Division  
 Three Rivers, MI 49093  
 Armstrong (269) 273-1415 Fax(269) 273-9500  
 Posted on Armstrong's homepage [www.armstrong-intl.com](http://www.armstrong-intl.com)

Product	CD No.	Date
GAS FIRED HUMIDICLEAN GFH-450	1255 (SHT. 2)	4/21/03
		Rev. B