

# DIMENSIONS & DATA CERTIFIED FOR:

Representative:

Order:

Customer:

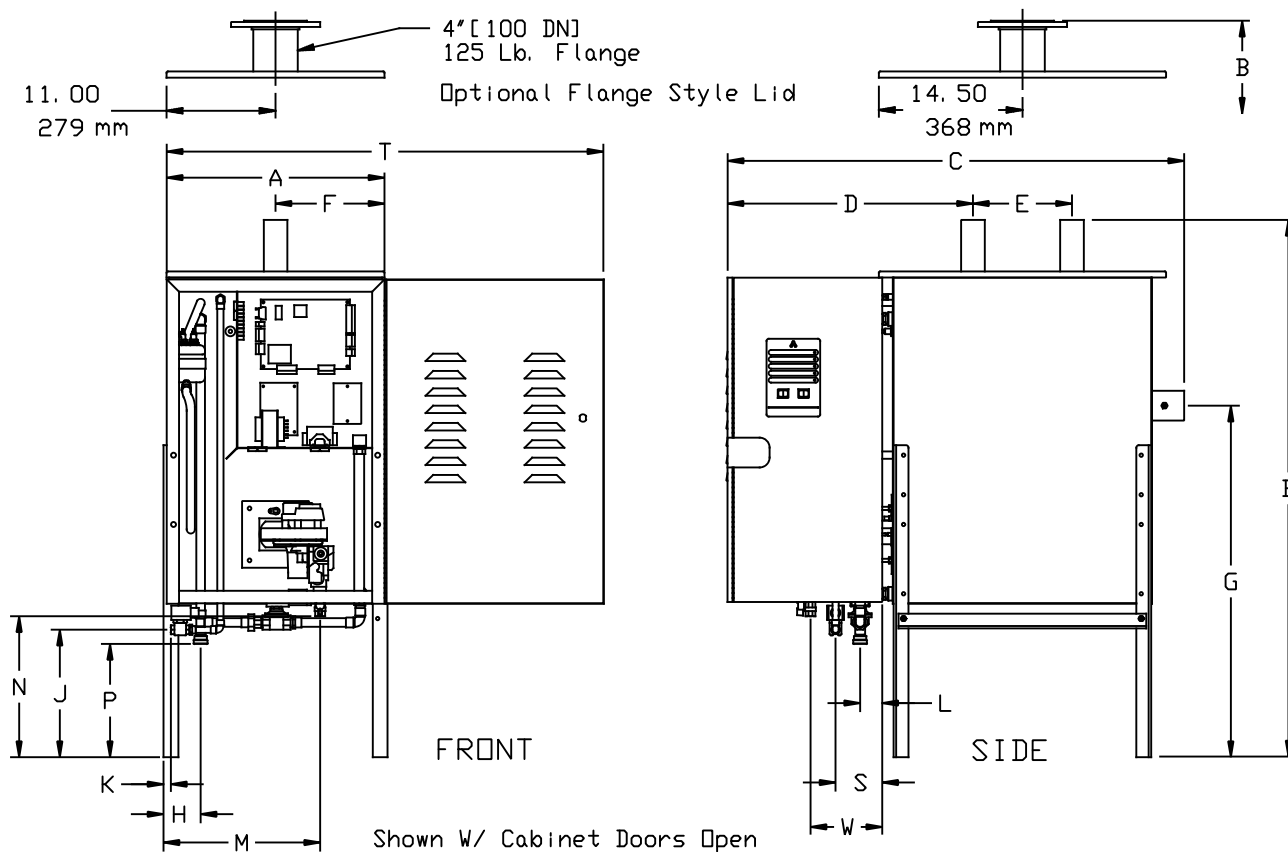
Order:

Project:

Requirements:

By:


Date:



DIMENSIONS	in	mm
A - Tank Width	22	559
B - Overall Height	54-3/16	1376
C - Overall Width	46-1/8	1172
D - Steam Outlet to End of Cabinet	24-13/16	630
E - Steam Outlet Spacing	10	254
F - Steam Outlet to Edge of Tank	11	279
G - Vent Outlet to Floor	35-1/2	902
H - Drain Outlet to Edge of Tank	3-3/4	95
J - Water Inlet to Floor	12-7/8	327
K - Water Inlet to edge of Tank	3/4	20
L - Drain Outlet to Edge of Tank	2-1/4	57
M - Gas Inlet to Edge of Tank	15-13/16	402
N - Gas Inlet to Floor	14-1/4	362
P - Drain Outlet to Floor	11-7/16	291
S - Water Inlet to Edge of Tank	4-3/4	121
T - Cabinet Opening Clearance	44-1/8	1121
W - Gas Inlet to Edge of Tank	7-1/4	84
Water Inlet	3/8" NPT	10
Drain Connection	3/4"	20
Gas Inlet	1/2" NPT	15
Vent Size	3"	75
Steam Outlets	2-3/8" OD / 4" Flg.	

MATERIAL LIST	
Cabinet/Finish	16 GA. Stl./Powder Coated Epoxy Enamel
Tank/Heat Exchanger	304 Stn. Stl.
* Ionic Bed Module	Inert Fiber
* Ionic Bed Frame	304 Stn. Stl.
Hose Cuffs	EPDM Rubber
Dispersion Tube	18-8 Stn. Stl.
Tank Gasket	Closed Cell Silicone
Insulation	Foiled Fiberglass

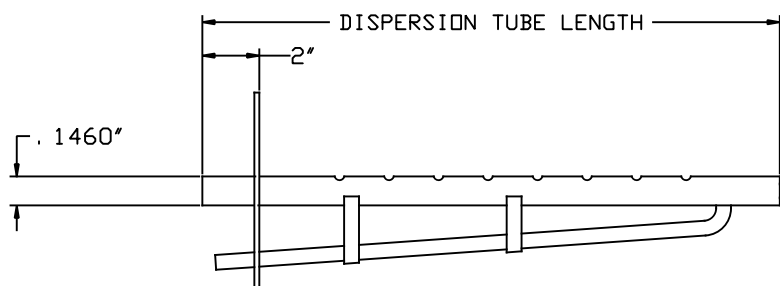
\* Not Used In DI/RO Applications



Armstrong International, Inc.  
Three Rivers Division  
Three Rivers, MI 49093  
Armstrong (269) 273-1415 Fax(269) 273-9500  
Posted on Armstrong's homepage [www.armstrong-intl.com](http://www.armstrong-intl.com)

Product	CD No.	Date
GAS FIRED HUMIDICLEAN GFH-150	1253	6/29/06
	Sht. 1	Rev. C

Selection Proper Steam Dispersion Tube								
Steam Disp. Tube Model No.	Steam Disp. Tube Length		Duct Width				Weight	
			Min.		Max.			
	in	mm	in	mm	in	mm	lb	kg
DL-1	12	304	11	279	16	406	3	1.4
DL-1.5	18	457	17	432	22	559	3	1.4
DL-2	24	609	23	584	34	864	4	2
DL-3	36	914	35	889	46	1168	6	3
DL-4	48	1219	47	1194	58	1473	8	3.6
DL-5	60	1524	59	1499	70	1778	9	4
DL-6	72	1829	71	1803	82	2030	10	4.5
DL-7	84	2133	83	2108	94	2388	11	5
DL-8	96	2438	95	2413	106	2693	12	5.5
DL-9	108	2743	107	2718	118	2998	13	6
DL-10	120	3048	119	3023	130	3302	14	6.4



Capacities for Natural Gas			
Model Number	Steam Capacity		Max. Input
	lb/hr	kg/hr	btu/hr
GFH-150/GFH-150DI	155	70	210,000


Capacities for Propane			
Model Number	Steam Capacity		Max. Input
	lb/hr	kg/hr	btu/hr
GFH-150/GFH-150DI	150	68	200,000

Standard Package Includes
Humidifier W/ Legs
Hose Cuffs & Hose Clamps
0-10 Vdc Room or Duct Humidistat
Insulation Package

Options
<input type="checkbox"/> Dwyer Duct Pressure Switch
<input type="checkbox"/> Humidistat: High Limit ON/OFF
<input type="checkbox"/> Humidistat: High Limit MODULATING
<input type="checkbox"/> Temp-R-Drain
<input type="checkbox"/> Fan Package: Ehf-III (2 Req'd)
<input type="checkbox"/> Tank Enclosure
<input type="checkbox"/> Natural Gas
<input type="checkbox"/> Propane Gas

#### Weights:

Dry Wt. 292 lbs [133 kgs]  
 Wet Wt. 700 lbs [318 kgs]  
 Enclosure Wt. 55 lbs [25 kgs]  
 Shipping Wt. 425 lbs [193 kgs]

 Armstrong International, Inc. Three Rivers Division Three Rivers, MI 49093 Armstrong (269) 273-1415 Fax(269) 273-9500 Posted on Armstrong's homepage <a href="http://www.armstrong-intl.com">www.armstrong-intl.com</a>		
Product	CD No.	Date
GAS FIRED HUMIDICLEAN GFH	1253 (SHT. 2)	4/21/03
		Rev. B