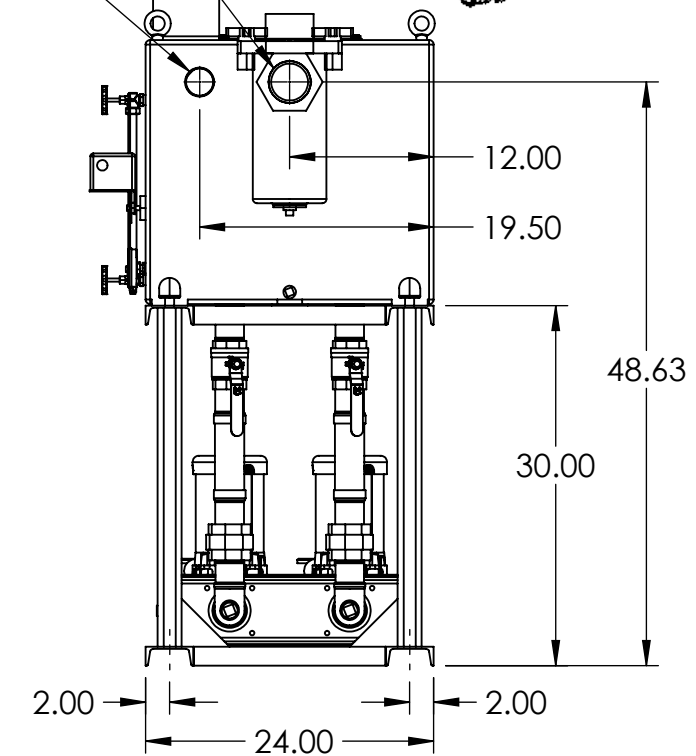
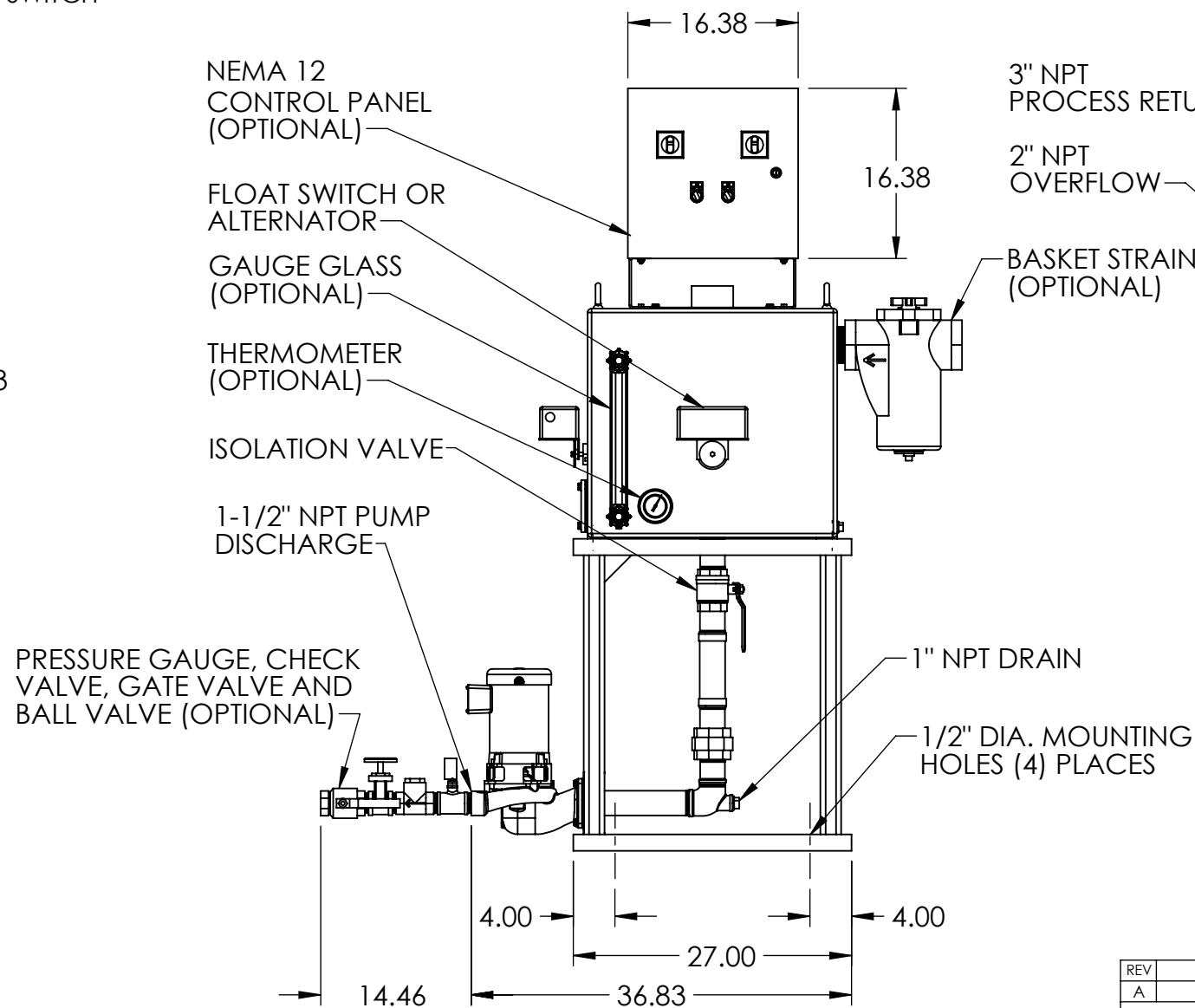
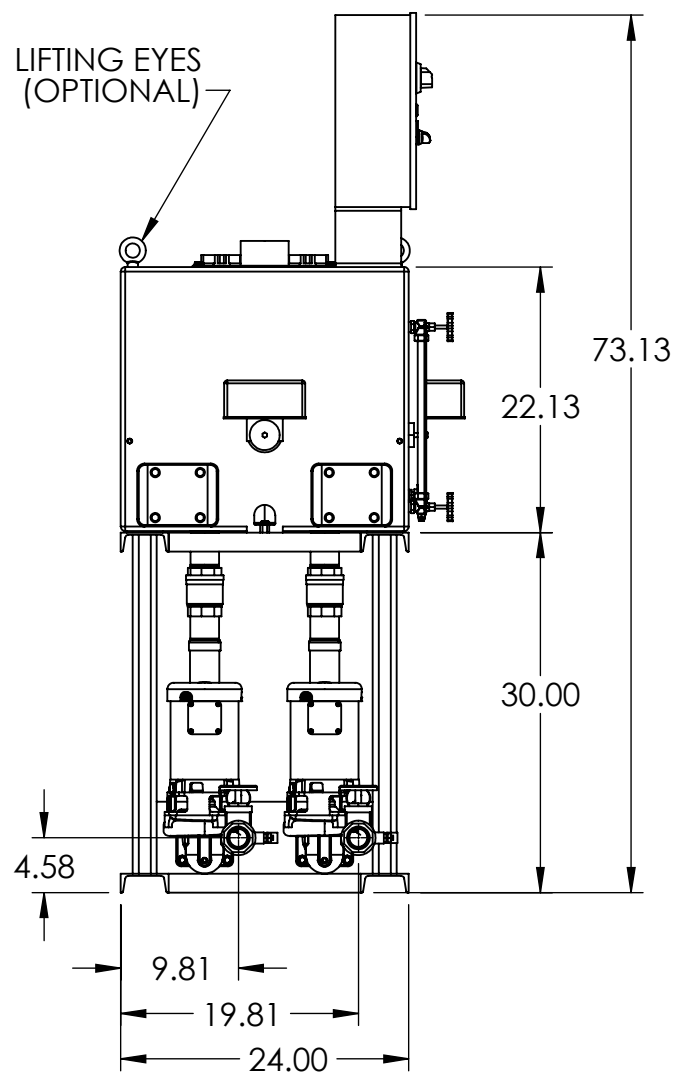
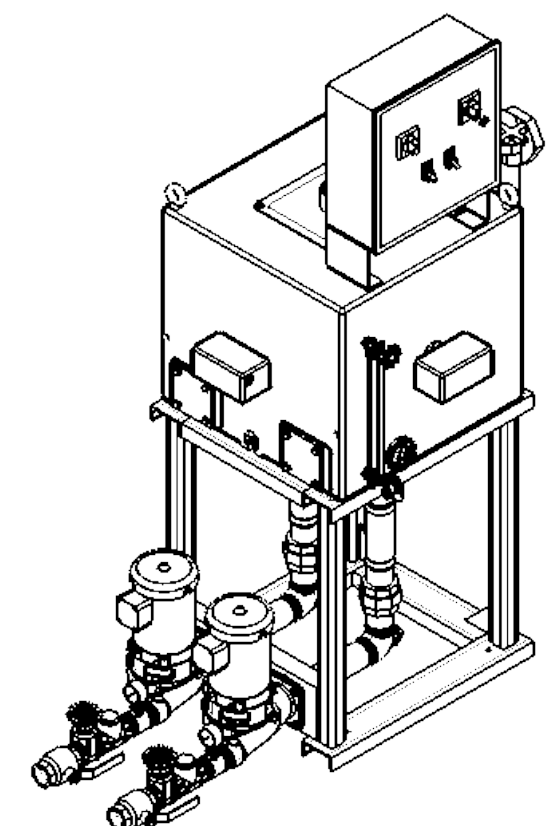
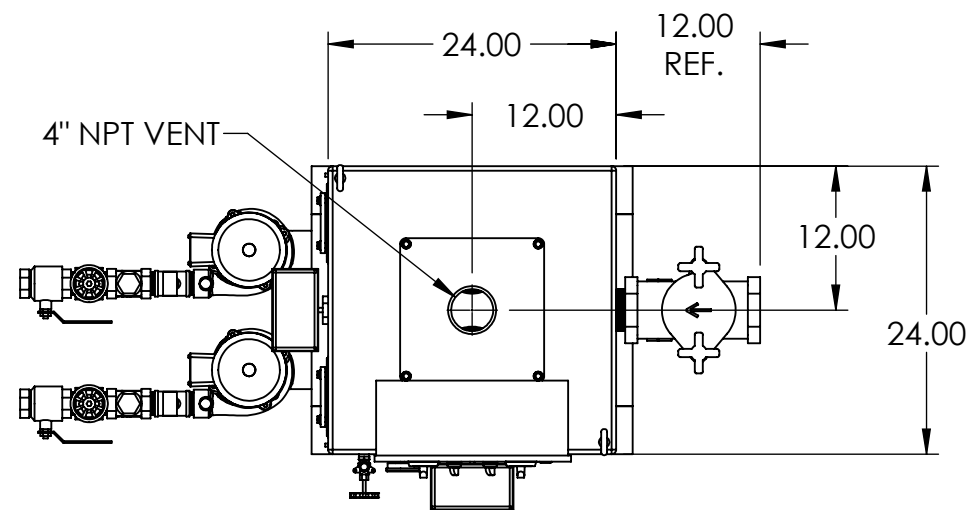


NOTES:

- TANK MATERIAL: CAST IRON PER ASTM A48 CLASS 30
- ALL DIMENSIONS ARE ±0.25"
- DRAWING NOT FOR CONSTRUCTION
- CONSULT FACTORY AT TIME OF ORDER FOR CURRENT PRINT

CONTROL PANEL OPTIONS ALSO AVAILABLE (NOT SHOWN):

- NEMA 4 OR NEMA 4X OR NEMA 3R CONSTRUCTION
- ELECTRIC ALTERNATOR
- POWER ON LIGHT
- PUMP TEST BUTTON
- PUMP RUN TIME METER
- EXTRA DRY CONTACTS
- UL/CUL LABELED PANEL
- HIGH LEVEL ALARM HORN & LIGHT W/SILENCE SWITCH
- LEAD-AUTO-LAG SELECTOR



REV	DESCRIPTION	ECN	NAME	DATE
A	INITIAL DESIGN		GJM	11/9/2017
PART NO: Ref PartNo		NAME	DATE	
FABRICATION TOLERANCES UNLESS OTHERWISE SPECIFIED: DIMENSIONS ARE IN INCHES		DRAWN	GJM	11/9/2017
TOLERANCES: ANGULAR DIMENSIONS ±1° FRACTIONS ±1/32		CHECKED		
TWO PLACE DECIMAL ±0.06		ENG APPR.		
THREE PLACE DECIMAL ±0.030		PRODUCT FAMILY	HTSP Boiler and Condensate	
SHEET: 1 OF 1		PRODUCT CATEGORY	4200	
WEIGHT	766.02	DRAWING MAY NOT BE PRINTED TO SCALE.	DWG NO.	684.47050.10
		SCALE: 1:16		REV A

