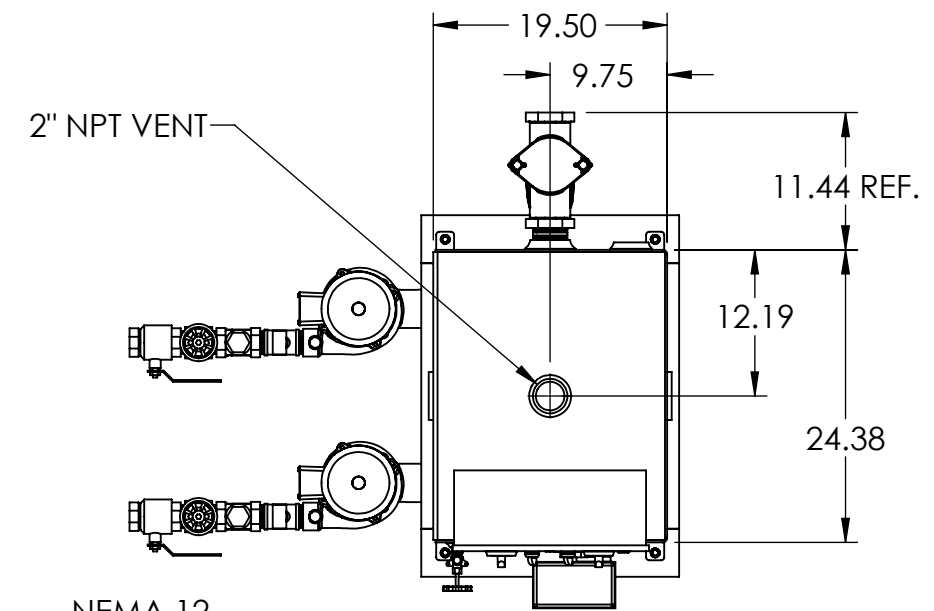
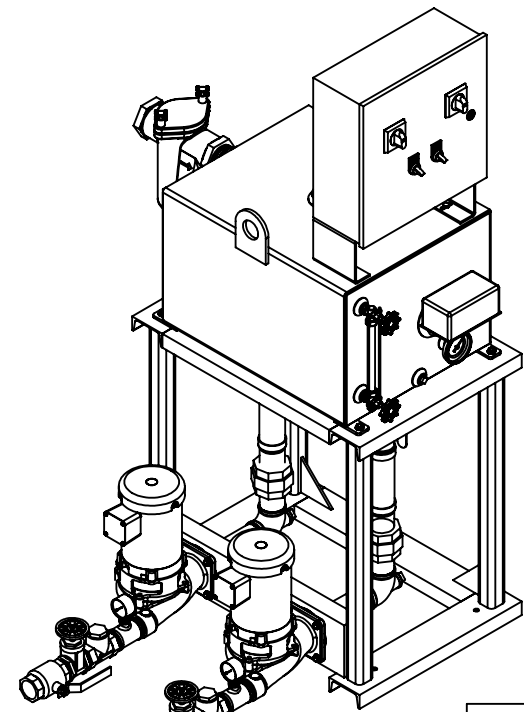


**NOTES:**

- TANK MATERIAL: STEEL
- ALL DIMENSIONS ARE  $\pm 0.25"$
- DRAWING NOT FOR CONSTRUCTION
- CONSULT FACTORY AT TIME OF ORDER FOR CURRENT PRINT

**CONTROL PANEL OPTIONS ALSO AVAILABLE (NOT SHOWN):**

- NEMA 4 OR NEMA 4X OR NEMA 3R CONSTRUCTION
- ELECTRIC ALTERNATOR
- POWER ON LIGHT
- PUMP TEST BUTTON
- PUMP RUN TIME METER
- EXTRA DRY CONTACTS
- UL/CUL LABELED PANEL
- HIGH LEVEL ALARM HORN & LIGHT W/SILENCE SWITCH
- LEAD-AUTO-LAG SELECTOR SWITCH



2" NPT VENT

NEMA 12 CONTROL PANEL (OPTIONAL)

FLOAT SWITCH OR ALTERNATOR

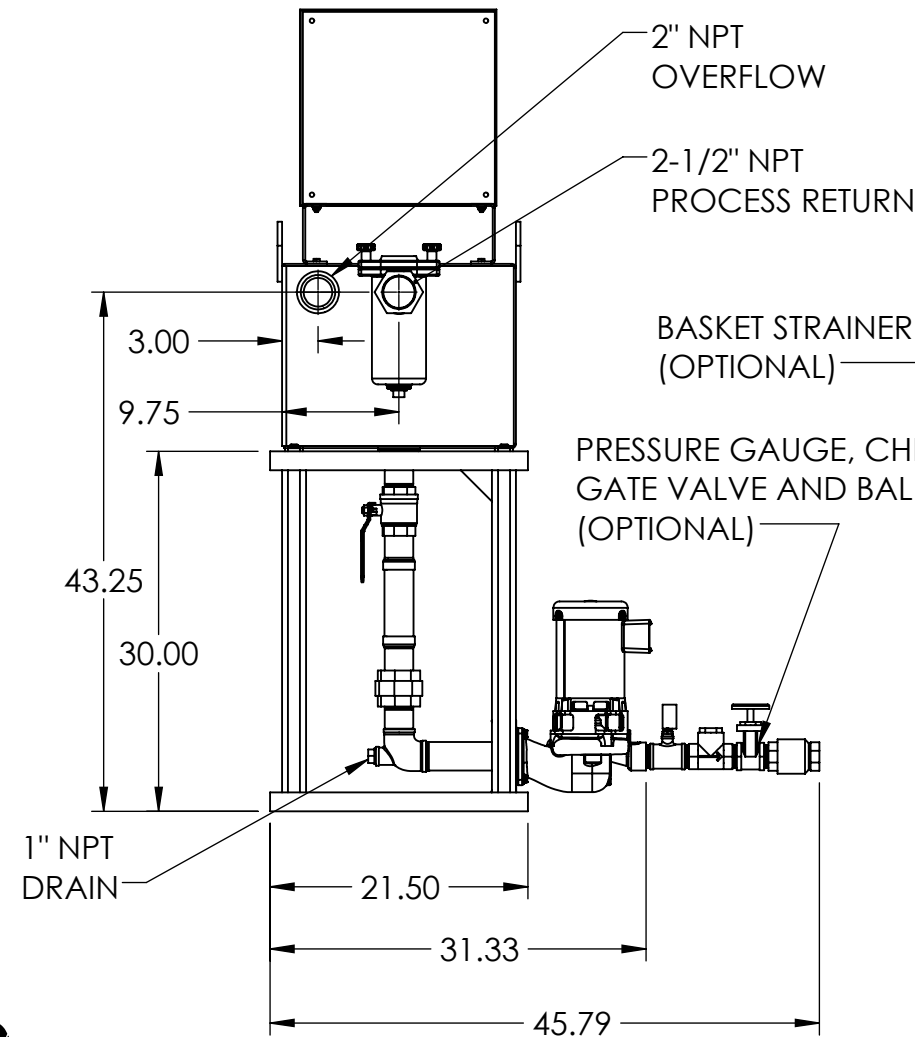
THERMOMETER (OPTIONAL)

GAUGE GLASS (OPTIONAL)

ISOLATION VALVE

1-1/2" NPT PUMP DISCHARGE

1/2" MOUNTING HOLES (QTY = 4)



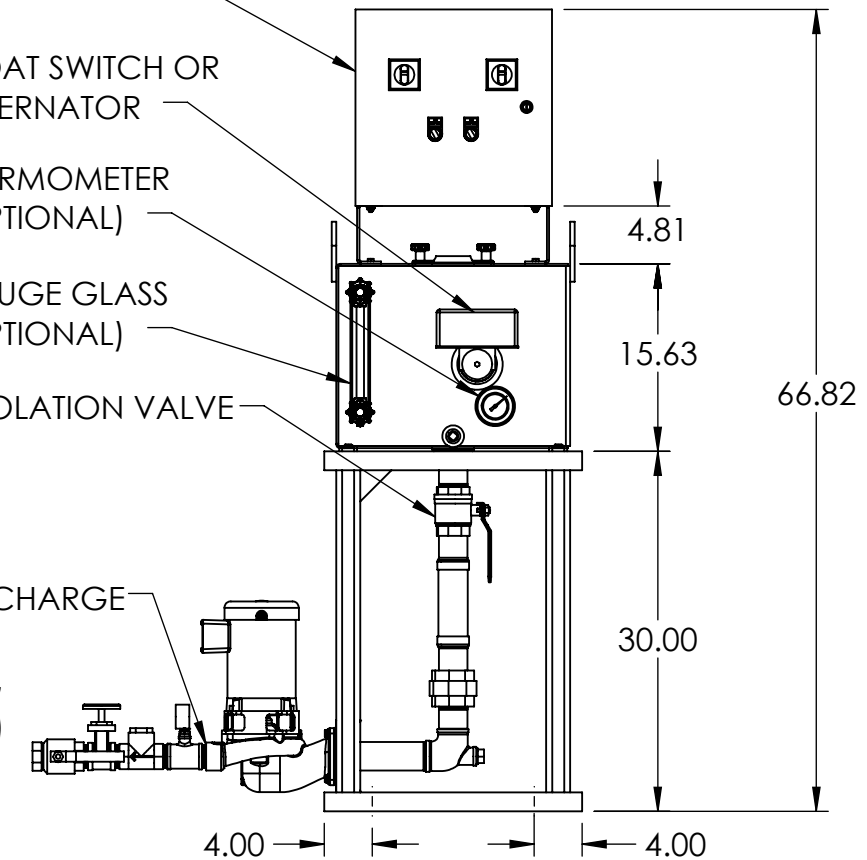
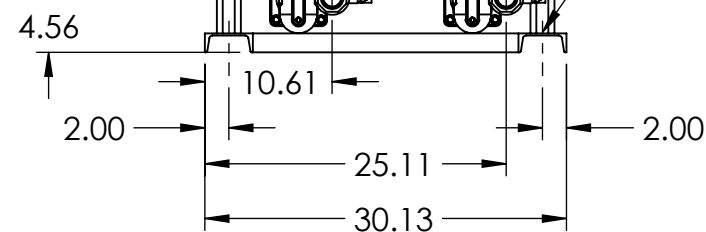
2" NPT OVERFLOW

2-1/2" NPT PROCESS RETURN

BASKET STRAINER (OPTIONAL)

PRESSURE GAUGE, CHECK VALVE, GATE VALVE AND BALL VALVE (OPTIONAL)

LIFTING EYES (OPTIONAL)



REV	DESCRIPTION	ECN	NAME	DATE
A	INITIAL DESIGN		GJM	11/1/2017
PART NO: 684.46030.10		NAME	DATE	
DRAWN		GJM	11/1/2017	
CHECKED				
ENG APPR.				
PRODUCT FAMILY		HTSP Boiler and Condensate		
PRODUCT CATEGORY		4600		
SHEET: 1 OF 1		WEIGHT	DRAWING MAY NOT BE PRINTED TO SCALE.	DWG NO.
2676.10		SCALE: 1:16	684.46030.10	REV A

