

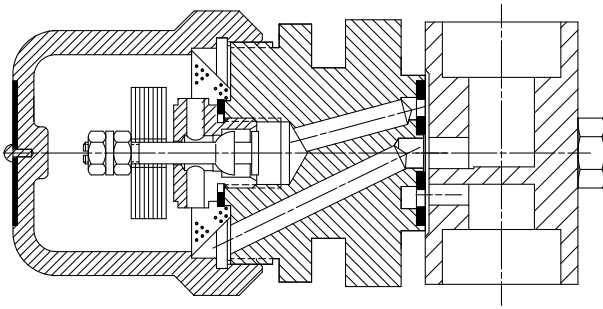


AB-3000 Bimetallic Steam Trap

Stainless Steel

For Pressures to 22 bar...Capacities to 1 800 kg/h

Steam Trapping and Steam Tracing Equipment



Description

Armstrong's AB-3000 Bimetallic Steam Trap operates by the effect that rising temperature has on bimetallic elements. It adjusts itself to changing conditions, as the increasing pressure on the valve is compensated by the curving of the bimetallic elements caused by the increasing temperature.

Armstrong's AB-3000 has a sealed, stainless steel body that is lightweight, compact and highly resistant to corrosion. The AB-3000 is repairable (body and cap can be unscrewed). It is piped through the Armstrong 360° Universal Connector or Trap Valve Station (TVS). This makes it easy to install and replace, as the trap can be removed while the connector remains in-line. The result is savings in labor cost and increasing in flexibility, as other trap types (Inverted Bucket, Thermostatic and Thermodynamic) can be installed on the same connector.

Maximum operating conditions

Maximum allowable pressure (vessel design): 28 bar @ 343°C
 Maximum operating pressure: 22 bar
 Maximum back pressure: 99% of inlet pressure

Connections

Screwed BSPT and NPT
 Socketweld
 Flanged DIN or ANSI (welded)

Materials

Body: ASTM - A240 304L
 Standard connector: Stainless steel – 304
 Valve: Chrome steel – 440F
 Seat: 303 Stainless steel
 Elements: Nickel plated
 Strainer: 304 Stainless steel

Specification

Bimetallic repairable steam trap, type AB-3000 in stainless steel, with integral strainer. Piped through 360° Universal Connector or Trap Valve Station (TVS). Maximum allowable back pressure 99% of inlet pressure.

How to order

- Specify:
- Size and type of pipe connection.
 - Maximum working pressure that will be encountered
 - Maximum condensate load

Table ST-190-1. Model AB-3000 Trap (dimensions in mm)

Pipe Connections	15 – 20 – 25
"C" Face-to-Face (screwed & SW)	60 – 60 – N/A
"CC" Face-to-Face (flanged PN40*)	150 – 150 – 160
Weight in kg (screwed & SW)	1,9
Weight in kg (flanged PN40*)	4,3 – 4,5 – 4,7

* Standard flanges are in carbon steel, stainless steel flanges are optional. Other flange sizes, ratings and face-to-face dimensions are available on request. All sizes comply with the Article 4.3 of the PED (2014/68/UE).

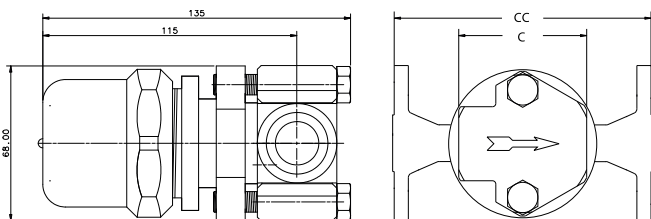
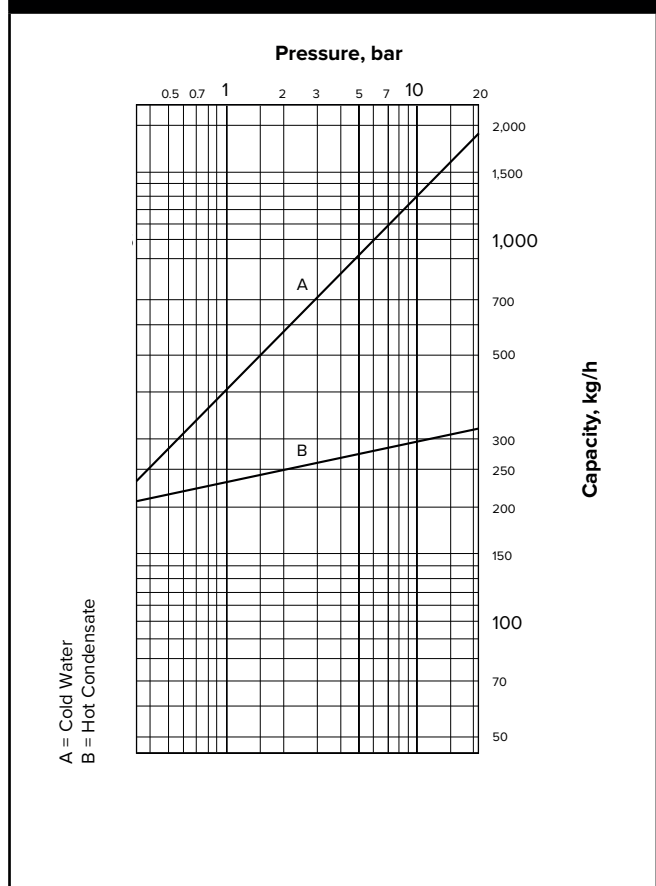


Table ST-190-2. Model AB-3000 Capacity



† May be derated depending on flange rating and type.

All dimensions and weights are approximate. Use certified print for exact dimensions. Design and materials are subject to change without notice.