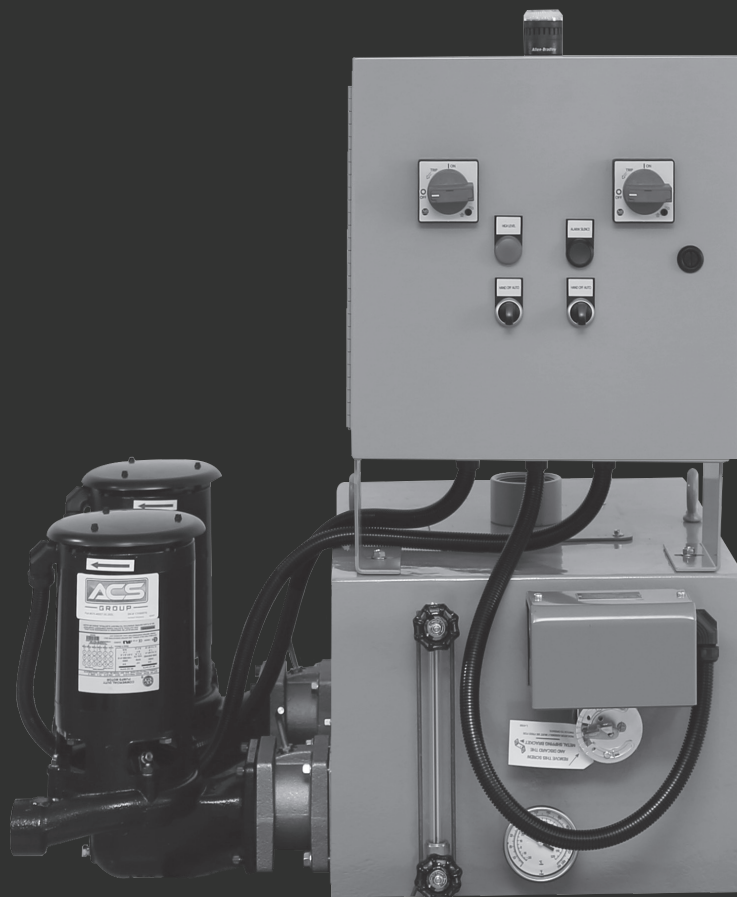




4700 SERIES CONDENSATE UNITS

CAST IRON TANK





Technical Specifications

4700 Series Condensate Units set new standards of performance. Reliable and efficient, each unit features heavy-duty cast iron receivers for long operating life.

In addition, 3450 RPM motors assure maximum efficiency while maintaining minimum motor horsepower. Available in a wide range of sizes, these U.S. made units have just the right accessories and options to meet your unique needs.

Features

- Heavy-duty cast iron receivers
- Simplex or duplex construction
- Stainless steel fitted centrifugal pumps
- Energy efficient 3450 RPM motors
- Automatic venting
- Carbon ceramic pump seal (300°F) with EPDM elastomers
- Heavy-duty float switch
- Wide range of options and accessories

Optional Features

- Mechanical and electric alternators for duplex units
- Gauge glass
- Thermometer
- Isolation valves
- Special motor construction, such as totally enclosed, washdown duty and explosion-proof is available
- 75 & 120 gallon tanks are available
- Elevated tanks are available
- Complete NEMA 12 Control Panel

4700 Series Product Features



Motors:

Heavy-duty, ball-bearing, close-coupled pump motors with stainless steel shaft. 3450 RPM for greater efficiency and more economical operation.

Float Switch:

Two-pole, drip proof case, stainless steel float and float rod, double-break silver-to-silver contacts. Float travel adjustment is easy, visible and accessible.

Automatic Venting:

Provides for efficient operation and long life by venting air and flushing seal area.

Large Tanks:

Plenty of capacity for maximum rating of pump. Return inlet is low. Occupies a minimum of floor space.

Impeller:

Made of stainless steel for long life. Efficient design provides maximum capacity, minimum motor load.

Inducer:

Made of stainless steel for long life. Raises the inlet pressure by an amount sufficient to prevent cavitation.

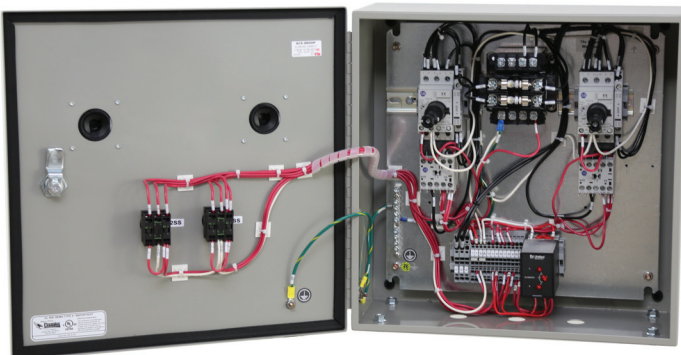
Pump seal (A):

Features the ultimate in ceramic technology for exceptionally long life. Seal is carbon ceramic with EPDM elastomers. Rated for temperatures up to 300°F.

Isolation Valve (B):

Optional on 4700 Series Condensate Units. Allows removal of pump without draining the tank.

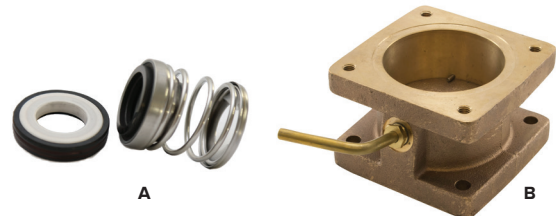
Control Panel



Inside view of control panel



Elevated Unit



Complete NEMA 12 Control Panel (Optional)

- Motor Circuit Protector
- HOA Selector Switch
- External Reset
- Control Circuit Transformer
- Pilot Light (pump running)
- Removable Mounting Plate and Terminal Strip in a Single NEMA 12 Enclosure
- Mounted and Wired with Single Point Power Connection.



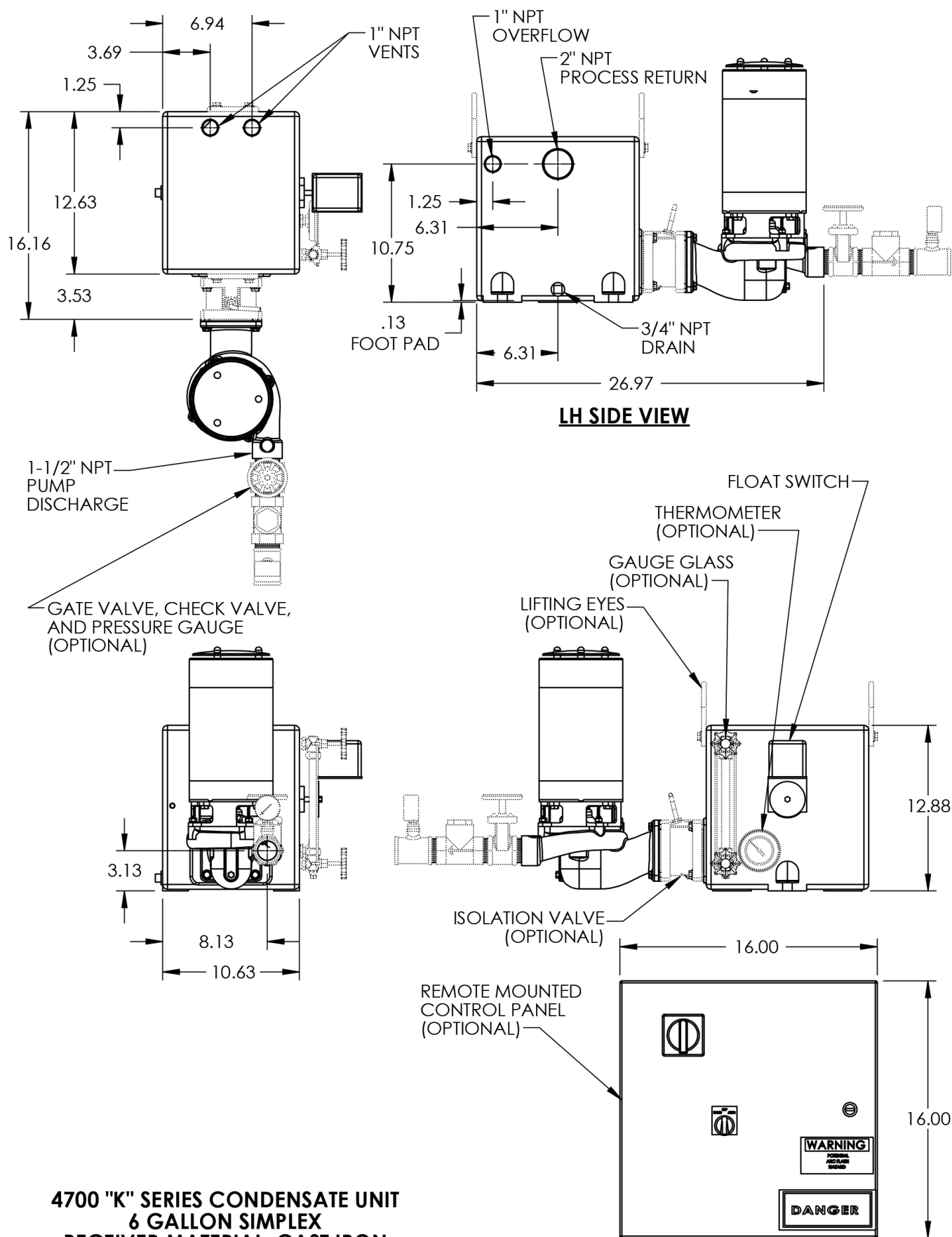
4700 Series Engineering and Capacity Data

Capacity Sq. Ft. EDR	Discharge Pressure PSI	Pump Capacity, GPM	Motor HP	Rec. Capacity, Gallons	Unit Model Number		Shipping Weight, lbs.	
					Simplex	Duplex	Simplex	Duplex
2,000 4,000 6,000 8,000	20	3 6 9 12	1/2 1/2 1/2 1/2	6 6 15 15	AFH-4722-K AFH-4724-K AFH-4726-K AFH-4728-K	- - AFH-4726-KD AFH-4728-KD	150 150 260 260	- - 295 295
10,000 15,000 20,000		15 22.5 30	1/2 1/2 3/4	15 24 36	AFH-47210-K AFH-47215-K AFH-47220-K	AFH-47210-KD AFH-47215-KD AFH-47220-KD	260 300 410	295 335 445
25,000 30,000		37.5 45	3/4 1	36 36	AFH-47225-K AFH-47230-K	AFH-47225-KD AFH-47230-KD	350 355	420 430
40,000 50,000		60 75	1-1/2 1-1/2	50 50	AFH-47240-K AFH-47250-K	AFH-47240-KD AFH-47250-KD	420 425	500 510
2,000 4,000 6,000 8,000 10,000	30	3 6 9 12 15	3/4 3/4 3/4 3/4 1	6 6 15 15 15	AFH-4732-K AFH-4734-K AFH-4736-K AFH-4738-K AFH-47310-K	- - AFH-4736-KD AFH-4738-KD AFH-47310-KD	165 165 295 295 300	- - 360 360 365
15,000 20,000		22.5 30	1 1	24 36	AFH-47315-K AFH-47320-K	AFH-47315-KD AFH-47320-KD	305 355	380 430
25,000 30,000		37.5 45	1-1/2 1-1/2	36 36	AFH-47325-K AFH-47330-K	AFH-47325-KD AFH-47330-KD	355 360	430 440
40,000 50,000		60 75	2 2	50 50	AFH-47340-K AFH-47350-K	AFH-47340-KD AFH-47350-KD	425 435	510 525
2,000 4,000 6,000 8,000 10,000	40	3 6 9 12 15	1 1 1-1/2 1-1/2 1-1/2	6 6 15 15 15	AFH-4742-K AFH-4744-K AFH-4746-K AFH-4748-K AFH-47410-K	- - AFH-4746-KD AFH-4748-KD AFH-47410-KD	170 170 295 295 295	- - 360 360 360
15,000 20,000		22.5 30	1-1/2 1-1/2	24 36	AFH-47415-K AFH-47420-K	AFH-47415-KD AFH-47420-KD	310 360	390 440
25,000 30,000		37.5 45	2 2	36 36	AFH-47425-K AFH-47430-K	AFH-47425-KD AFH-47430-KD	360 365	440 450
40,000 50,000		60 75	3 3	50 50	AFH-47440-K AFH-47450-K	AFH-47440-KD AFH-47450-KD	425 435	510 525
2,000 4,000 6,000 8,000 10,000	50	3 6 9 12 15	1-1/2 1-1/2 1-1/2 1-1/2 2	6 6 15 15 15	AFH-4752-K AFH-4754-K AFH-4756-K AFH-4758-K AFH-47510-K	- - AFH-4756-KD AFH-4758-KD AFH-47510-KD	175 175 315 315 315	- - 395 395 395
15,000 20,000		22.5 30	2 3	24 36	AFH-47515-K AFH-47520-K	AFH-47515-KD AFH-47520-KD	330 370	415 460
25,000 27,000		37.5 40	3 3	36 36	AFH-47525-K AFH-47527-K	AFH-47525-KD AFH-47527-KD	370 370	460 460

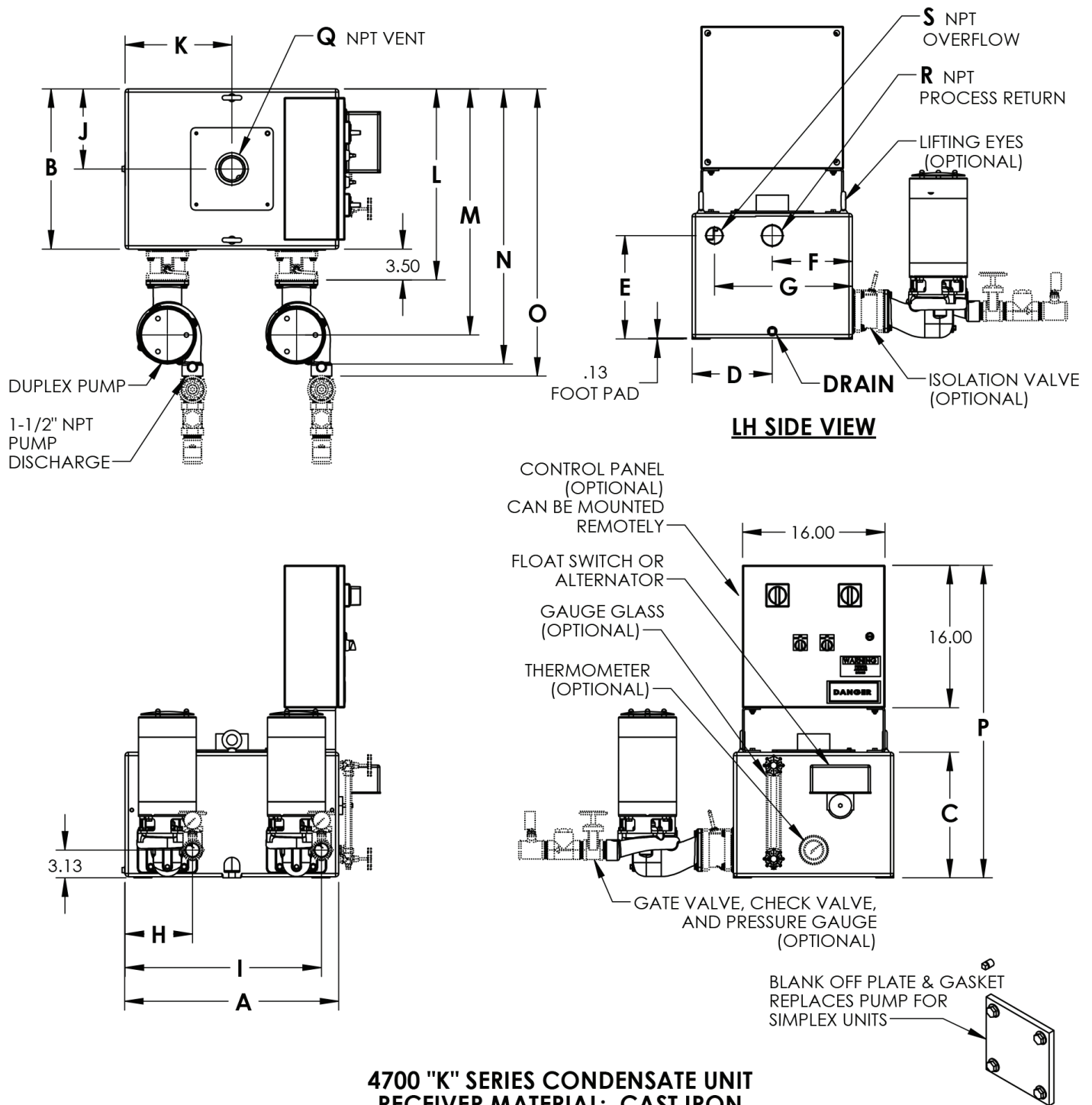
Sample Specification

Furnish and install, where indicated on plans, an Armstrong 4700 Series (simplex or duplex) condensate unit(s), having a capacity of _____ sq. ft. E.D.R. _____ GPM against a discharge pressure of _____ PSI. The receiver shall have a capacity of _____ gallons and be heavy-duty cast iron construction. Pump(s) shall be of the centrifugal type with one-piece enclosed stainless steel impeller, stainless steel inducer, cast iron housing, high temperature (300°F) mechanical seal and stainless steel motor shaft. The float switch shall be two-pole with plastic case, stainless steel float and shaft, and double-break silver contacts. An optional inlet "Y" or basket strainer is recommended for installation on the tank return inlet for pump protection. The motor(s) shall be vertical, 3450 RPM, _____ phase, _____ volt, 60 cycle, _____ H.P. The complete unit is to be factory assembled and tested prior to shipment.

4700 Series Product Diagrams – continued

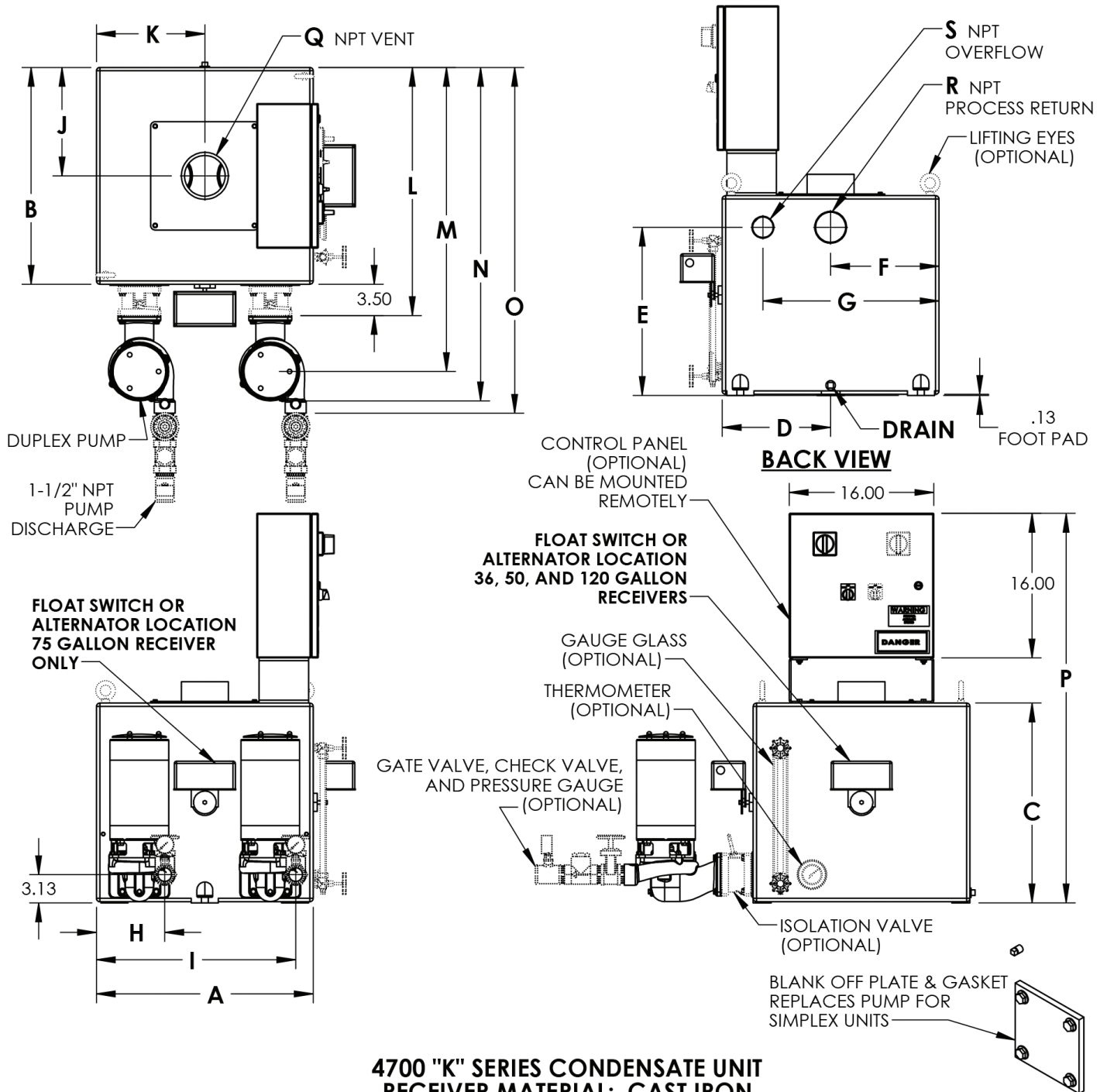


**4700 "K" SERIES CONDENSATE UNIT
6 GALLON SIMPLEX
RECEIVER MATERIAL: CAST IRON**



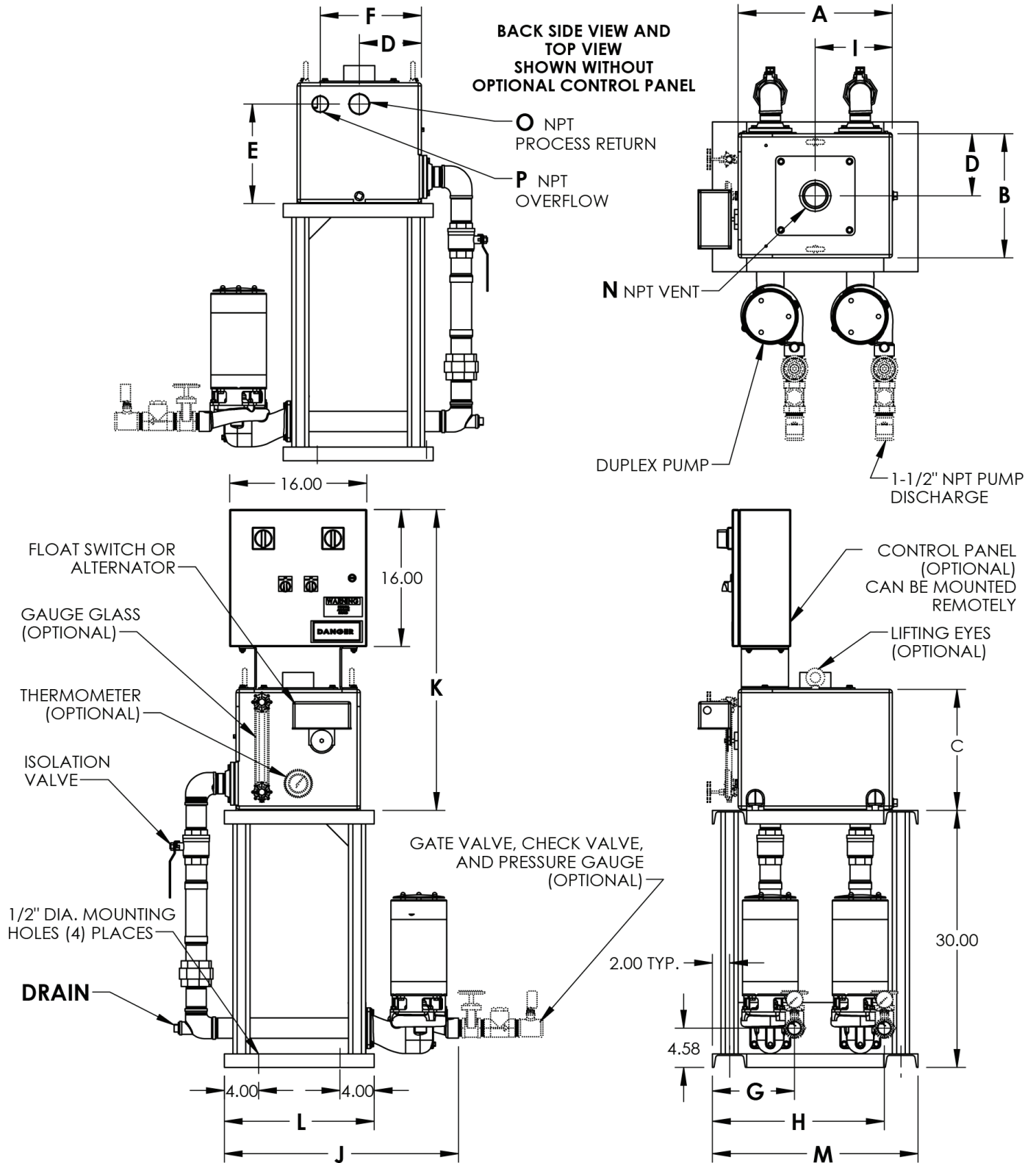
RECEIVER SIZE	A	B	C	D	E	F	G	H	I	J
15 GAL	18.00	14.50	14.13	7.25	11.63	7.25	11.81	6.56	17.06	7.25
24 GAL	24.00	18.00	14.13	9.00	11.63	9.00	15.50	7.56	22.06	9.00
	K	L	M	N	O	P	Q VENT	R RETURN	S OVERFLOW	DRAIN
15 GAL	9.00	18.00	24.16	27.41	28.78	35.13	2-1/2"NPT	2" NPT	1-1/2"NPT	3/4"NPT
24 GAL	12.00	21.50	27.66	30.91	32.28	35.13	2-1/2"NPT	2" NPT	1-1/2"NPT	3/4"NPT

4700 Series Product Diagrams – continued



**4700 "K" SERIES CONDENSATE UNIT
RECEIVER MATERIAL: CAST IRON**

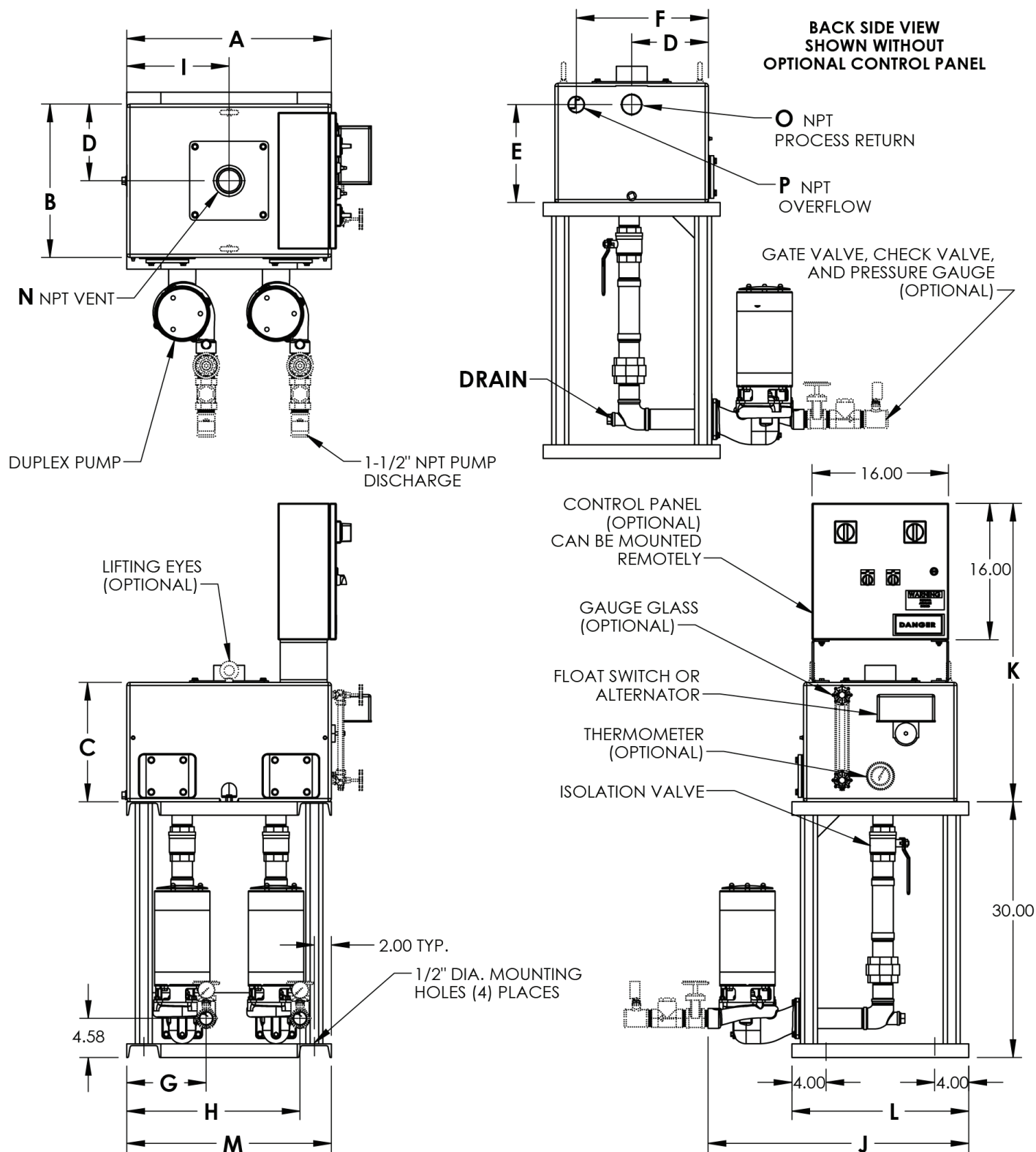
RECEIVER SIZE	A	B	C	D	E	F	G	H	I	J
36 GAL	24.00	24.00	16.13	12.00	12.63	12.00	19.50	7.56	22.06	12.00
50 GAL	24.00	24.00	22.13	12.00	18.63	12.00	19.50	7.56	22.06	12.00
75 GAL	30.00	30.00	21.19	15.00	16.19	15.00	26.00	6.81	28.81	15.00
120 GAL	36.00	36.00	22.19	18.00	18.69	18.00	30.00	7.81	33.81	18.00
	K	L	M	N	O	P	Q	R	S	DRAIN
							VENT	RETURN	OVERFLOW	
36 GAL	12.00	27.50	33.66	36.91	38.28	37.13	3" NPT	3" NPT	2" NPT	3/4" NPT
50 GAL	12.00	27.50	33.66	36.91	38.28	43.13	4" NPT	3" NPT	2" NPT	3/4" NPT
75 GAL	15.00	33.50	39.66	42.91	44.28	42.19	4" NPT	3" NPT	1" NPT	3/4" NPT
120 GAL	18.00	39.50	45.66	48.91	50.28	43.19	4" NPT	4" NPT	2" NPT	3/4" NPT



**4700 "K" SERIES ELEVATED CONDENSATE UNIT
RECEIVER MATERIAL: CAST IRON**

RECEIVER SIZE	A	B	C	D	E	F	G	H	I	J	K	L	M	N	O	P	DRAIN
15 GAL	18.00	14.50	14.13	7.25	11.63	11.81	9.36	20.06	9.00	27.33	35.13	17.50	24.00	2-1/2"	2"	1-1/2"	1"NPT

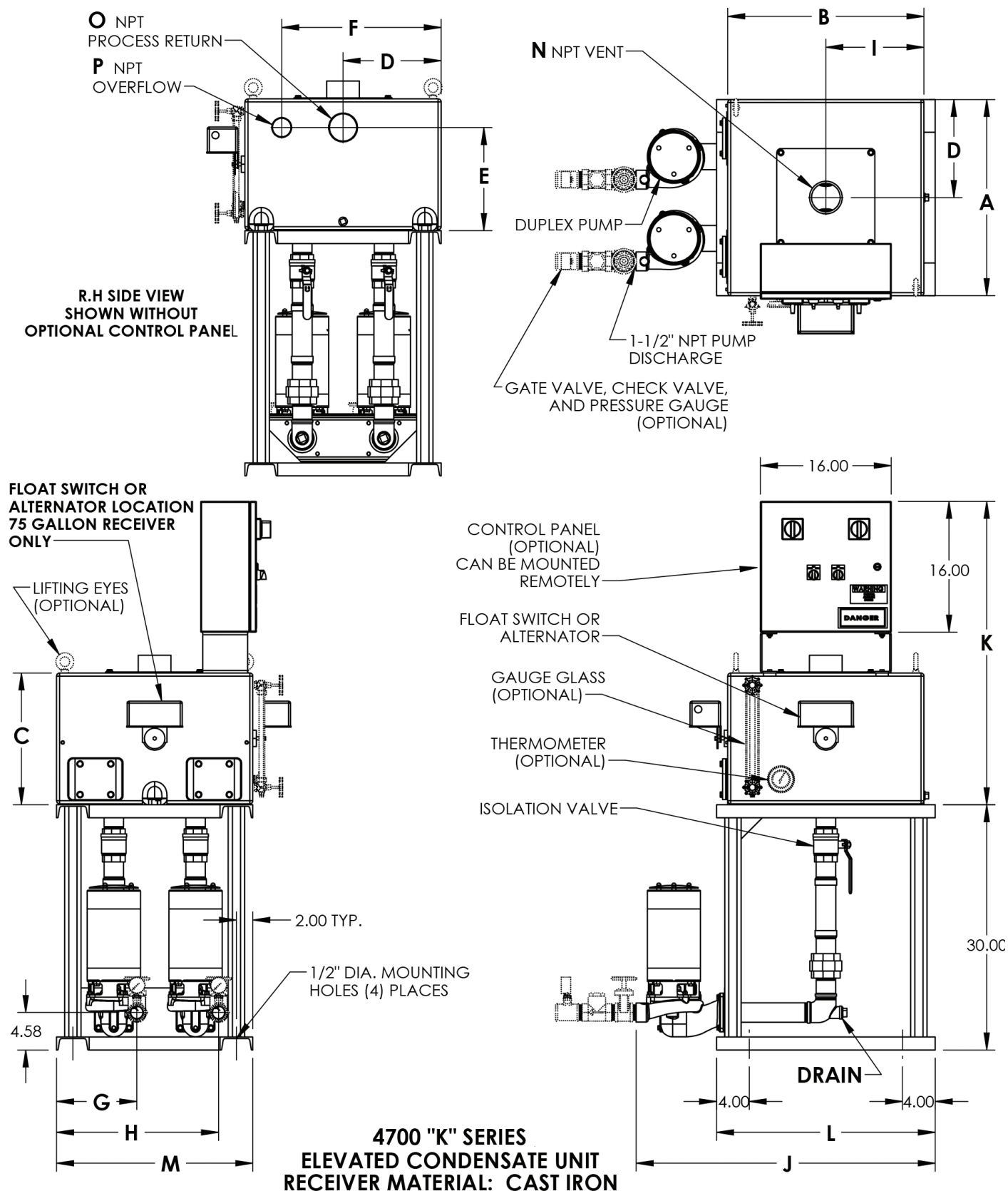
4700 Series Product Diagrams – continued



4700 "K" SERIES ELEVATED CONDENSATE UNIT
RECEIVER MATERIAL: CAST IRON

RECEIVER SIZE	A	B	C	D	E	F	G	H	I	J	K	L	M	N	O	P	DRAIN
24 GAL	24.00	18.00	14.13	9.00	11.63	15.50	9.31	20.31	12.00	30.58	35.13	20.75	24.00	2-1/2"	2"	1-1/2"	1"NPT

4700 Series Product Diagrams – continued



RECEIVER SIZE	A	B	C	D	E	F	G	H	I	J	K	L	M	N	O	P	DRAIN
36 GAL	24.00	24.00	16.13	12.00	12.63	19.50	9.81	19.81	12.00	36.83	37.13	27.00	24.00	3"	3"	2"	1"NPT
50 GAL	24.00	24.00	22.13	12.00	18.63	19.50	9.81	19.81	12.00	36.83	43.13	27.00	24.00	4"	3"	2"	1"NPT
75 GAL	30.00	30.00	21.19	15.00	16.19	26.00	10.81	24.81	15.00	42.83	42.19	33.00	30.00	4"	3"	1"	1" NPT
120 GAL	36.00	36.00	22.19	18.00	18.69	30.00	13.81	27.81	18.00	48.83	43.19	39.00	36.00	4"	4"	2"	1" NPT

Notes





INTELLIGENT SOLUTIONS IN STEAM, AIR, AND HOT WATER

Armstrong International

North America • Latin America • India • Europe / Middle East / Africa • China • Pacific Rim

armstronginternational.com