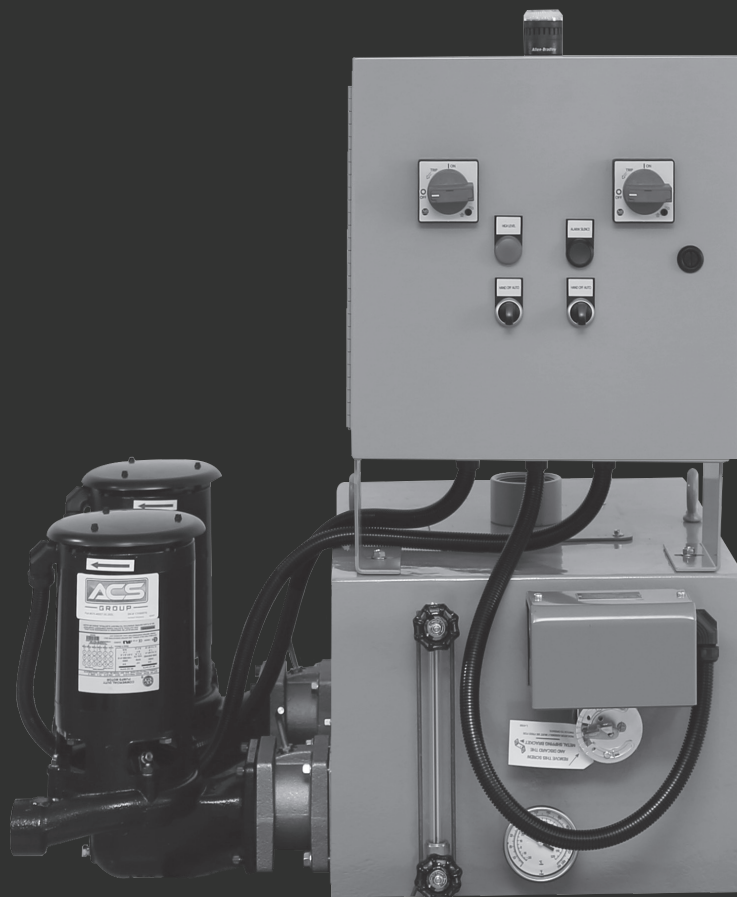




# 4600 SERIES CONDENSATE UNITS

STEEL TANK





## Technical Specifications

**4600 Series Condensate Units set new standards of performance. Reliable and efficient, each unit features heavy gauge, 3/16" steel receivers for long operating life.**

In addition, 3450 RPM motors assure maximum efficiency while maintaining minimum motor horsepower. Available in a wide range of sizes, these U.S. made units have just the right accessories and options to meet your unique needs.

## Features

- Heavy gauge steel receivers
- Simplex or duplex construction
- Stainless steel fitted centrifugal pumps
- Energy efficient 3450 RPM motors
- Automatic venting
- Carbon ceramic pump seal (300°F) with EPDM elastomers
- Heavy-duty float switch
- Wide range of options and accessories

## Optional Features

- Mechanical and electric alternators for duplex units
- Gauge glass
- Thermometer
- Isolation valves
- Special motor construction, such as totally enclosed, washdown duty and explosion-proof is available
- 120 gallon and elevated tanks are available
- Complete NEMA 12 Control Panel

# Product Features

## Motors:

Heavy-duty, ball-bearing, close-coupled pump motors with stainless steel shaft. 3450 RPM for greater efficiency and more economical operation.

## Float Switch:

Two-pole, drip proof case, stainless steel float and float rod, double-break silver-to-silver contacts. Float travel adjustment is easy, visible and accessible.

## Automatic Venting:

Provides for efficient operation and long life by venting air and flushing seal area.

## Large Tanks:

Plenty of capacity for maximum rating of pump. Return inlet is low. Occupies a minimum of floor space.

## Impeller:

Made of stainless steel for long life. Efficient design provides maximum capacity, minimum motor load.

## Inducer:

Made of stainless steel for long life. Raises the inlet pressure by an amount sufficient to prevent cavitation.

## Pump seal (A):

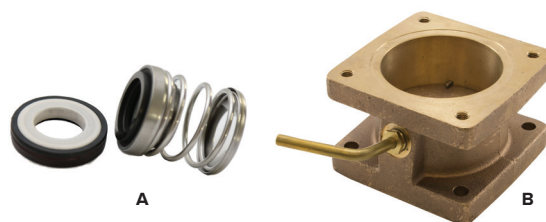
Features the ultimate in ceramic technology for exceptionally long life. Seal is carbon ceramic with EPDM elastomers. Rated for temperatures up to 300°F.

## Isolation Valve (B):

Optional on 4600 Series Condensate Units. Allows removal of pump without draining the tank.



Elevated Unit



## Control Panel



Inside view of control panel

## Complete NEMA 12 Control Panel (Optional)

- Motor Circuit Protector
- HOA Selector Switch
- External Reset
- Control Circuit Transformer
- Pilot Light (pump running)
- Removable Mounting Plate and Terminal Strip in a Single NEMA 12 Enclosure
- Mounted and Wired with Single Point Power Connection.

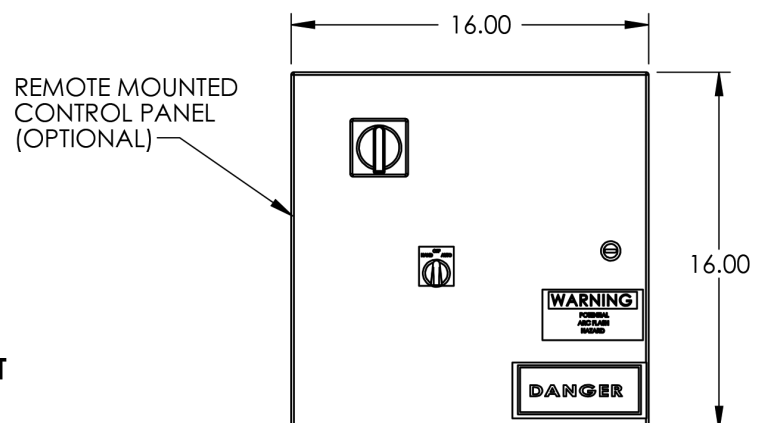
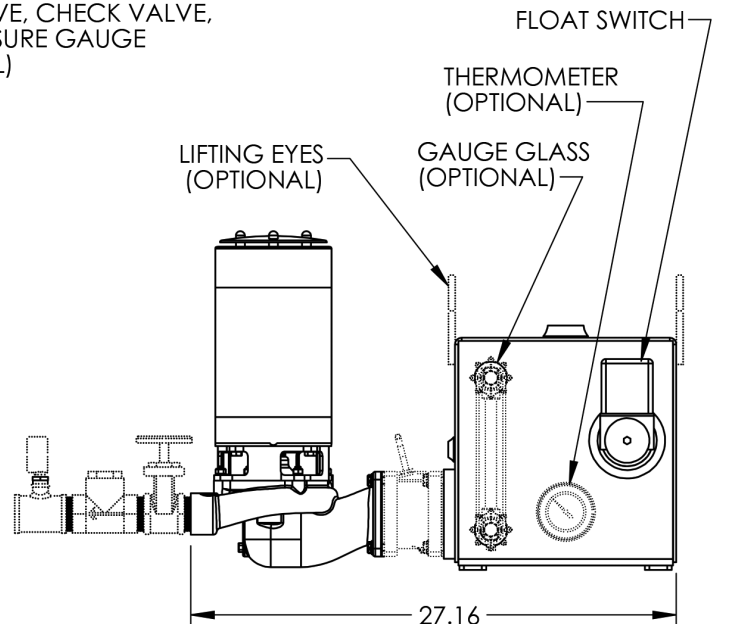
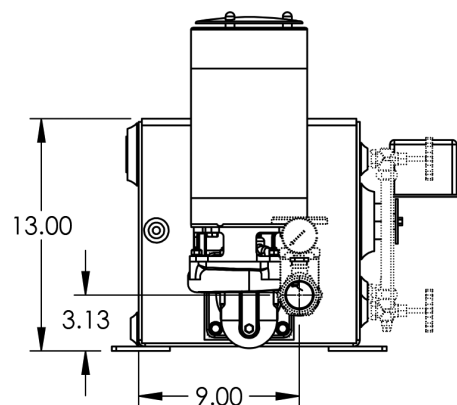
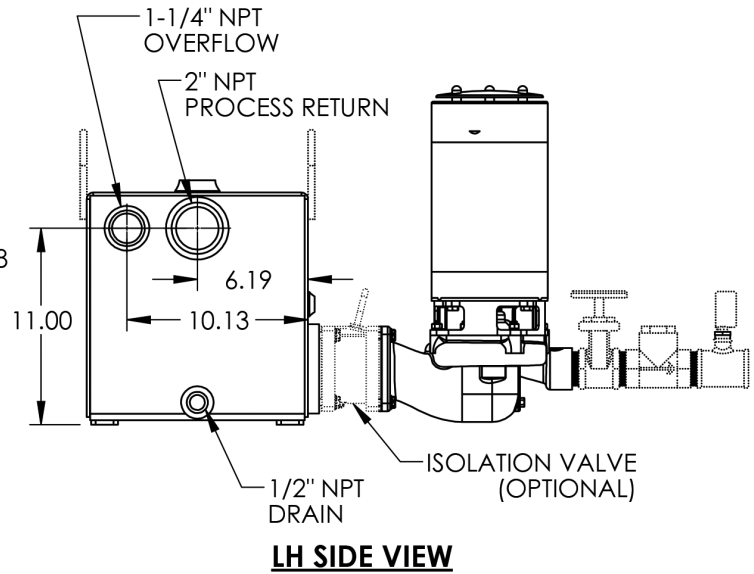
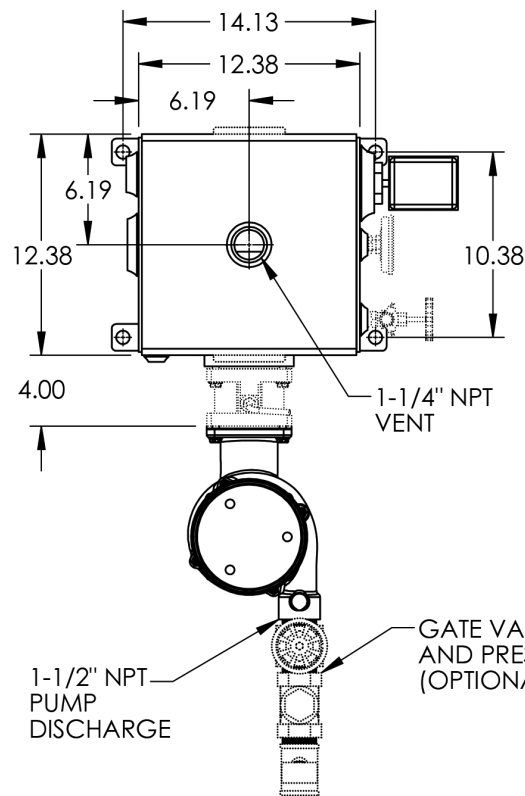


# 4600 Series Engineering and Capacity Data

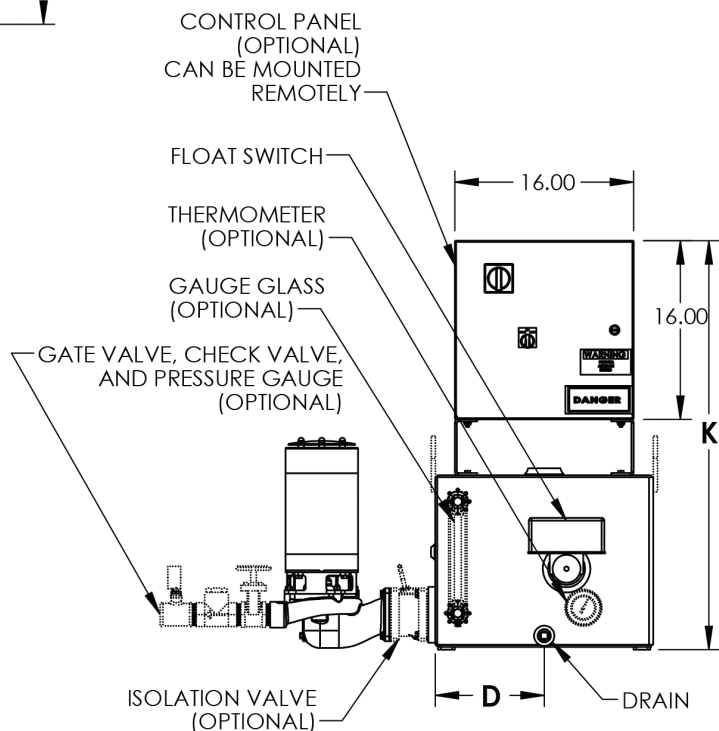
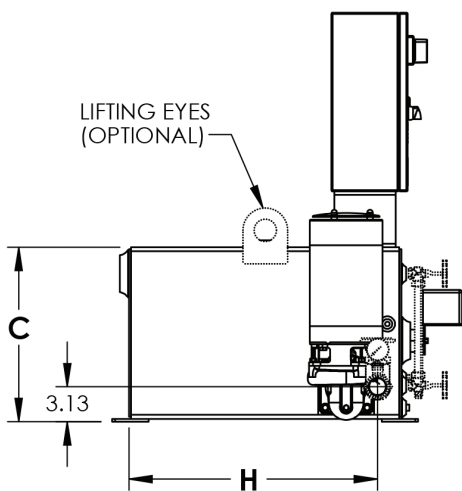
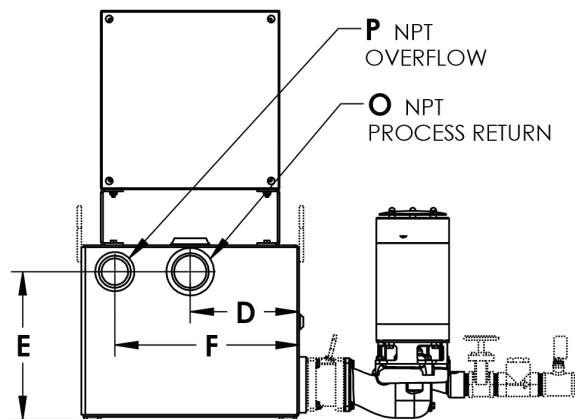
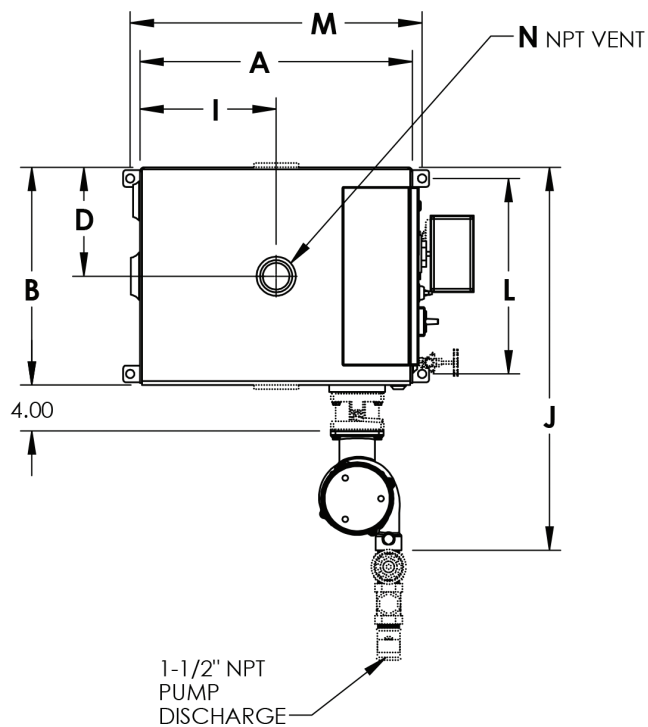
Capacity Sq. Ft. EDR	Discharge Pressure PSI	Pump Capacity, GPM	Motor HP	Rec. Capacity, Gallons	Unit Model Number		Shipping Weight, lbs.	
					Simplex	Duplex	Simplex	Duplex
8,000	20	12	1/2	8	AFH-4028-K	-	90	-
2,000	20	3	1/2	15	AFH-4622-K	AFH-4622-KD	125	185
4,000		6	1/2		AFH-4624-K	AFH-4624-KD	125	185
6,000		9	1/2		AFH-4626-K	AFH-4626-KD	125	185
8,000		12	1/2		AFH-4628-K	AFH-4628-KD	125	185
10,000	20	15	1/2	30	AFH-46210-K	AFH-46210-KD	190	240
15,000		22.5	1/2		AFH-46215-K	AFH-46215-KD	190	240
20,000		30	3/4		AFH-46220-K	AFH-46220-KD	200	250
25,000	20	37.5	3/4	45	AFH-46225-K	AFH-46225-KD	285	350
30,000		45	1		AFH-46230-K	AFH-46230-KD	285	350
40,000	20	60	1-1/2	60	AFH-46240-K	AFH-46240-KD	335	405
50,000	20	75	1-1/2	95	AFH-46250-K	AFH-46250-KD	385	460
2,000	30	3	3/4	15	AFH-4632-K	AFH-4632-KD	180	250
4,000		6	3/4		AFH-4634-K	AFH-4634-KD	180	250
6,000		9	3/4		AFH-4636-K	AFH-4636-KD	180	250
8,000		12	3/4		AFH-4638-K	AFH-4638-KD	180	250
10,000		15	1		AFH-46310-K	AFH-46310-KD	185	255
15,000	30	22.5	1	30	AFH-46315-K	AFH-46315-KD	230	300
20,000		30	1		AFH-46320-K	AFH-46320-KD	230	300
25,000	30	37.5	1-1/2	45	AFH-46325-K	AFH-46325-KD	285	350
30,000		45	1-1/2		AFH-46330-K	AFH-46330-KD	290	355
40,000	30	60	2	60	AFH-46340-K	AFH-46340-KD	340	410
50,000	30	75	2	95	AFH-46350-K	AFH-46350-KD	395	470
2,000	40	3	1	15	AFH-4642-K	AFH-4642-KD	190	270
4,000		6	1		AFH-4644-K	AFH-4644-KD	190	270
6,000		9	1-1/2		AFH-4646-K	AFH-4646-KD	190	270
8,000		12	1-1/2		AFH-4648-K	AFH-4648-KD	190	270
10,000		15	1-1/2		AFH-46410-K	AFH-46410-KD	190	270
15,000	40	22.5	1-1/2	30	AFH-46415-K	AFH-46415-KD	240	310
20,000		30	1-1/2		AFH-46420-K	AFH-46420-KD	240	310
25,000	40	37.5	2	45	AFH-46425-K	AFH-46425-KD	290	355
30,000		45	2		AFH-46430-K	AFH-46430-KD	295	360
40,000	40	60	3	60	AFH-46440-K	AFH-46440-KD	340	410
50,000	40	75	3	95	AFH-46450-K	AFH-46450-KD	395	470
2,000	50	3	1-1/2	15	AFH-4652-K	AFH-4652-KD	195	275
4,000		6	1-1/2		AFH-4654-K	AFH-4654-KD	195	275
6,000		9	1-1/2		AFH-4656-K	AFH-4656-KD	195	275
8,000		12	1-1/2		AFH-4658-K	AFH-4658-KD	195	275
10,000		15	2		AFH-46510-K	AFH-46510-KD	195	275
15,000	50	22.5	2	30	AFH-46515-K	AFH-46515-KD	245	320
20,000		30	3		AFH-46520-K	AFH-46520-KD	255	330
25,000	50	37.5	3	45	AFH-46525-K	AFH-46525-KD	305	385
27,000		40	3		AFH-46527-K	AFH-46527-KD	305	385

## Sample Specification

Furnish and install, where indicated on plans, an Armstrong 4600 Series (simplex or duplex) condensate unit(s), having a capacity of \_\_\_\_\_ sq. ft. E.D.R. \_\_\_\_\_ GPM against a discharge pressure of \_\_\_\_\_ PSI. The receiver shall have a capacity of \_\_\_\_\_ gallons and be of 3/16" steel construction. Pump(s) shall be of the centrifugal type with one-piece enclosed stainless steel impeller, stainless steel inducer, cast iron housing, high temperature (300°F) mechanical seal and stainless steel motor shaft. The float switch shall be two-pole with plastic case, stainless steel float and shaft, and double-break silver contacts. An optional inlet "Y" or basket strainer is recommended for installation on the tank return inlet for pump protection. The motor(s) shall be vertical, 3450 RPM, \_\_\_\_\_ phase, \_\_\_\_\_ volt, 60 cycle, \_\_\_\_\_ H.P. The complete unit is to be factory assembled and tested prior to shipment.



**4600 "K" SERIES CONDENSATE UNIT  
8 GALLON SIMPLEX  
RECEIVER MATERIAL: STEEL**

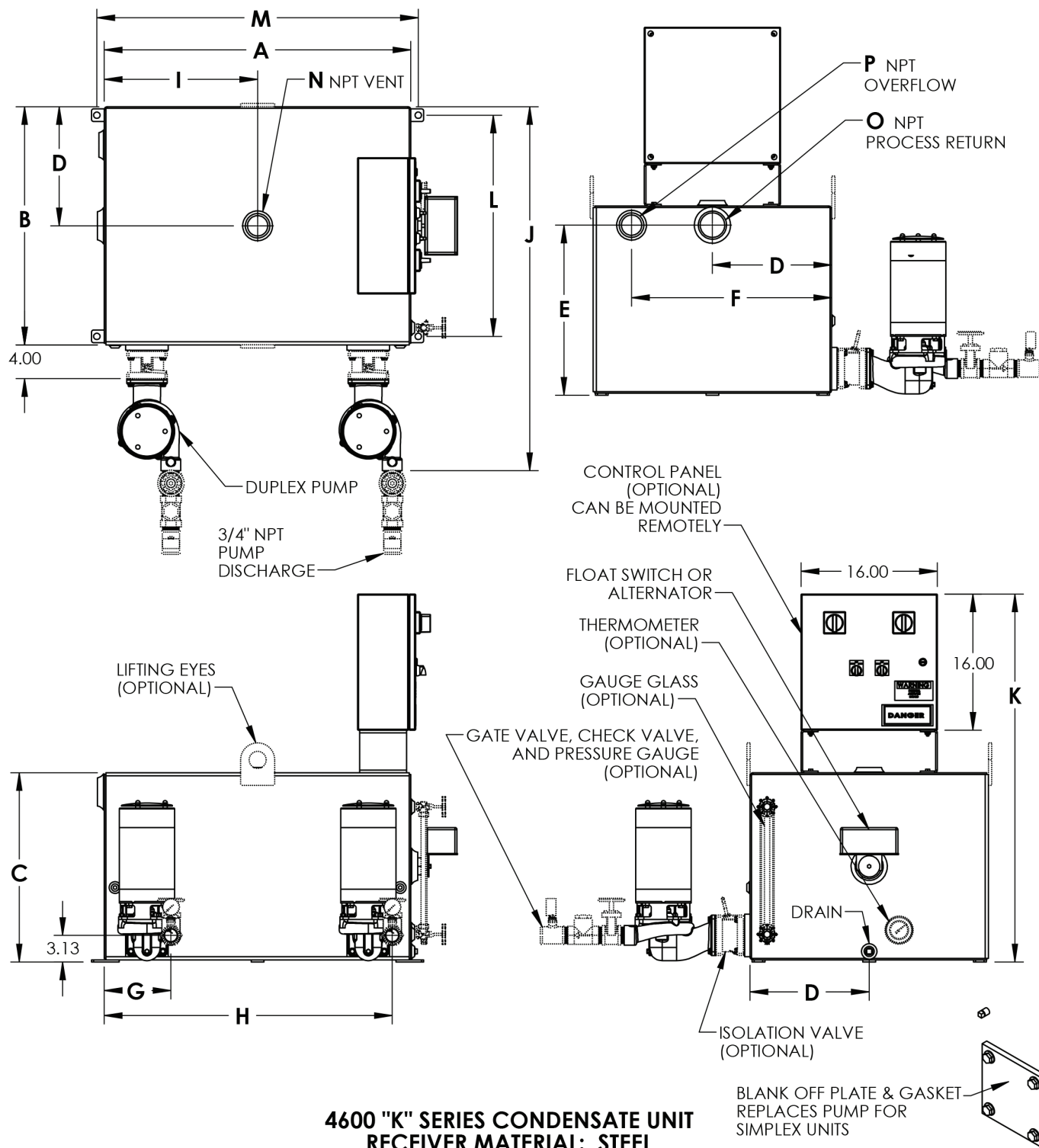


## 4600 "K" SERIES CONDENSATE UNIT RECEIVER MATERIAL: STEEL

RECEIVER SIZE	A	B	C	D	E	F	G	H	I	J	K	L	M	N	O	P	DRAIN
15 GAL	16.63	16.25	14.25	8.13	12.25	13.75		16.37	8.31	31.00	35.25	14.25	18.38	1-1/2"	2"	1-1/2"	1/2"NPT
30 GAL	24.38	19.50	15.63	9.75	13.25	16.50		22.25	12.19	34.25	35.63	17.50	26.13	2"	2-1/2"	2"	1/2"NPT

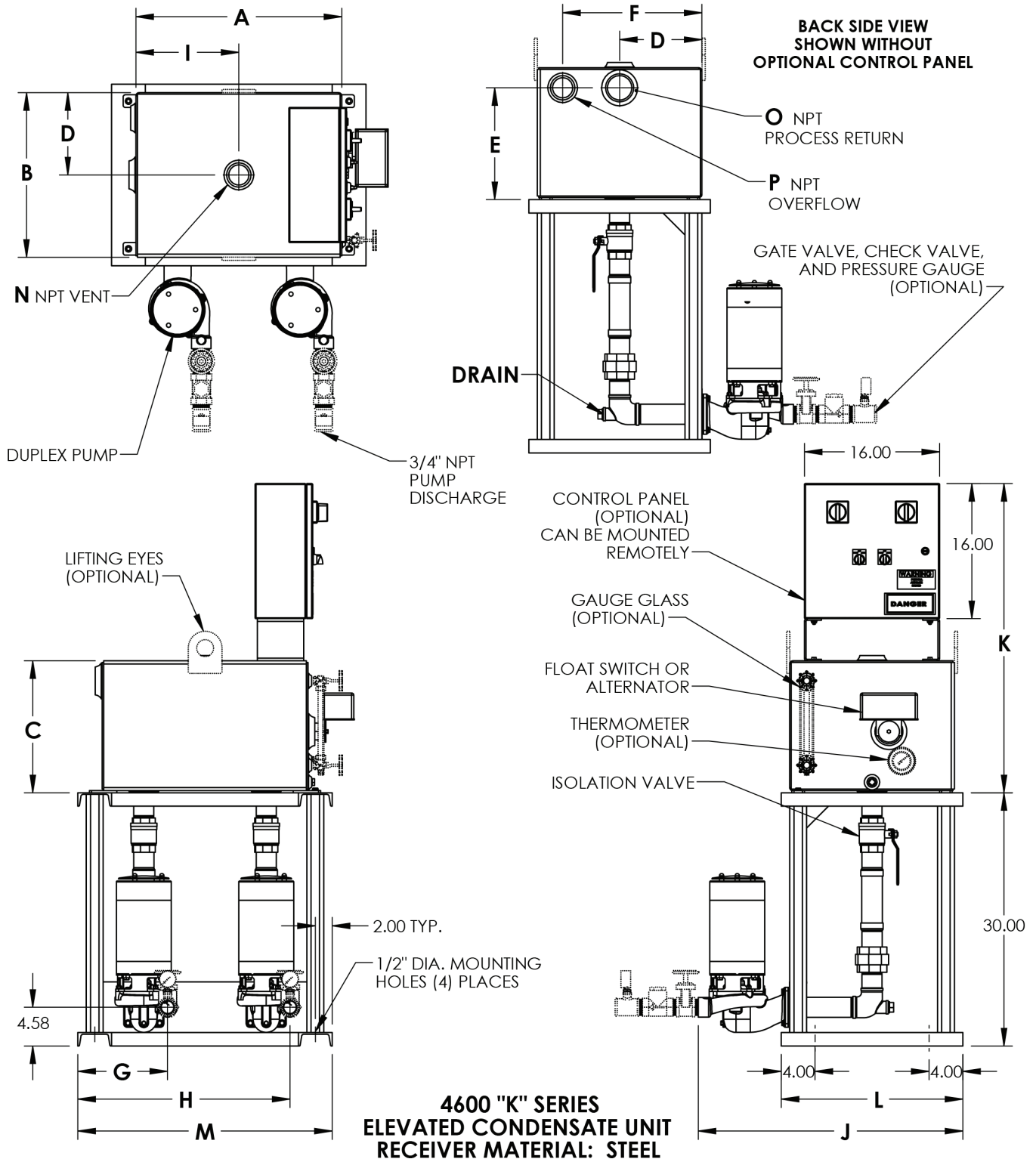


# Product Diagrams



**4600 "K" SERIES CONDENSATE UNIT  
RECEIVER MATERIAL: STEEL**

RECEIVER SIZE	A	B	C	D	E	F	G	H	I	J	K	L	M	N	O	P	DRAIN
15 GAL	16.63	16.25	14.25	8.13	12.25	13.75	5.87	16.37	8.31	31.00	35.25	14.25	18.38	1-1/2"	2"	1-1/2"	1/2" NPT
30 GAL	24.38	19.50	15.63	9.75	13.25	16.50	7.75	22.25	12.19	34.25	35.63	17.50	26.13	2"	2-1/2"	2"	1/2" NPT
45 GAL	24.00	22.00	20.25	11.00	18.00	19.00	7.57	22.07	12.00	36.75	41.25	20.00	25.75	2"	2-1/2"	2"	1/2" NPT
60 GAL	24.00	27.00	22.25	13.50	20.00	24.00	7.57	22.07	12.00	41.75	43.25	25.00	25.75	2"	2-1/2"	2"	1/2" NPT
95 GAL	36.00	28.00	22.25	14.00	20.00	23.50	7.81	33.81	18.00	42.75	43.25	26.00	37.75	2"	2-1/2"	2"	1/2" NPT
120 GAL	36.00	36.00	22.25	18.00	20.00	31.50	7.81	33.81	18.00	50.75	43.25	34.00	37.50	2"	2-1/2"	2"	1/2" NPT



RECEIVER SIZE	A	B	C	D	E	F	G	H	I	J	K	L	M	N	O	P	DRAIN
15 GAL	16.63	16.25	14.25	8.13	12.25	13.75	8.75	19.25	8.31	28.08	35.25	18.25	22.83	1-1/2"	2"	1-1/2"	1"NPT
30 GAL	24.38	19.50	15.63	9.75	13.25	16.50	10.63	25.13	12.19	31.33	35.63	21.50	30.13	2"	2-1/2"	2"	1"NPT
45 GAL	24.00	22.00	20.25	11.00	18.00	19.00	10.45	24.95	12.00	33.83	41.25	24.00	29.75	2"	2-1/2"	2"	1"NPT
60 GAL	24.00	27.00	22.25	13.50	20.00	24.00	10.45	24.95	12.00	38.83	43.25	29.00	29.75	2"	2-1/2"	2"	1"NPT
95 GAL	36.00	28.00	22.25	14.00	20.00	23.50	10.69	36.69	18.00	39.83	43.25	30.00	41.75	2"	2-1/2"	2"	1" NPT
120 GAL	36.00	36.00	22.25	18.00	20.00	31.50	10.69	36.69	18.00	47.83	43.25	38.00	41.75	2"	2-1/2"	2"	1" NPT



# Notes





## Notes





INTELLIGENT SOLUTIONS IN STEAM, AIR, AND HOT WATER

**Armstrong International**

North America • Latin America • India • Europe / Middle East / Africa • China • Pacific Rim

[armstronginternational.com](http://armstronginternational.com)