



Armstrong® Float & Thermostatic Replacement Cap

Steam Trapping and
Steam Tracing Equipment

Description

Float & Thermostatic Replacement Cap Assembly

These Float and Thermostatic (F&T) Repair Cap Assemblies are designed to repair certain Spirax-Sarco FT-Series Steam Traps, as well as models of several other manufacturers. The cap assembly consists of a cap, mechanism, float, thermostatic air vent, gasket and bolts. The kit is completely assembled and ready to install.

Maximum Operating Conditions

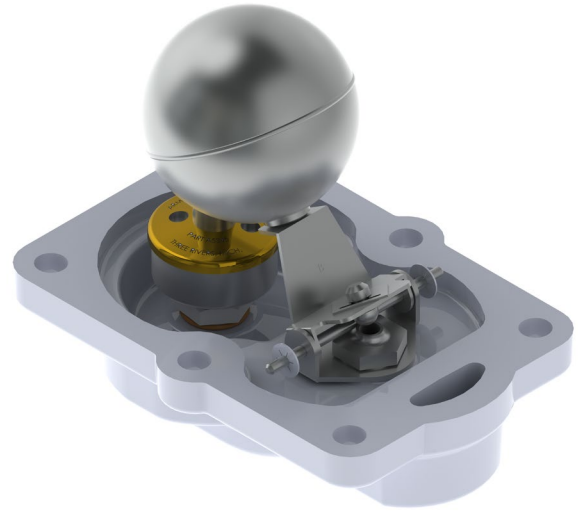
Please refer to original steam trap manufacturer operation conditions. This replacement cap will meet the conditions of those models listed below.

Materials

Cap: Cast Iron ASTM A48 CL.30A
Gasket: Graphoil GHN
Thermostatic Bellows: Brass
Mechanical Assembly and Float: T304SS
Valve: 17-4PH H900
Seat: T303 SS

Features

This product gives you the performance and long life that you expect from an Armstrong steam trap while making it simple to install into the existing trap body. The F&T style trap is perfect for heating service where continuous drainage with high air-venting capacity is required. The proper replacement cap assembly for the F&T steam trap depends on the connection size, manufacturer model number and the maximum operating pressure.



Specifications

Float & Thermostatic Replacement Cap			
Connection Size	Model	Max. Operating Pressure	Use Armstrong Repair Cap Part #
3/4" - 1"	FT-15	15 psig (1.03 barg)	D114713
	FT-30	30 psig (2.06 barg)	D114714
	FT-75	75 psig (5.17 barg)	D114717
	FT-125	125 psig (8.62 barg)	D114718
1-1/4"	FT-15	15 psig (1.03 barg)	D114715
	FT-30	30 psig (2.06 barg)	D114716

Compatible trap models (see chart above for operating pressure and connection sizes):

- Spirax-Sarco FT-Series
- Barnes & Jones – FT2000 Series
- Hoffman – FT H Series
- Erwel – F Series
- Watts – WFT Series
- Nicholson – FTN Series
- Watson McDaniel – WFT Series
- Tunstall – TA-FT Series

How to Order

Specify the following:

- Manufacturer / Model Number
- Max. Operation Pressure
- Connection Size

Refer to the Part Numbers in above Table

Designs, materials, weights and performance ratings are approximate and subject to change without notice. Visit armstronginternational.com for up-to-date information.