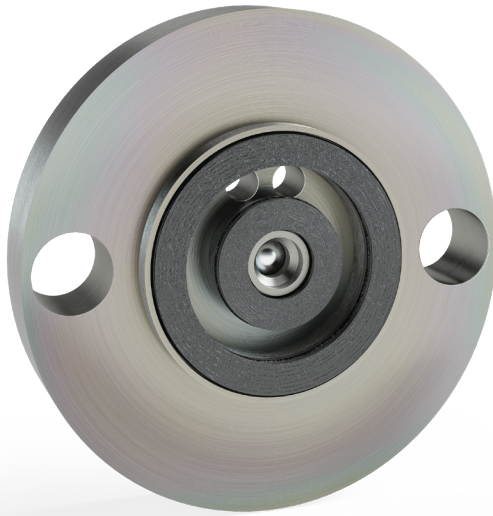


2-BOLT CONNECTOR BLOCK CHECK VALVE



Front



Back

2-Bolt Connector Block Valve Provides:

- | In-line check valve that reduces installation time
- | Since the 2-bolt check valve is separate from the trap itself, it's easy to retrofit in existing applications and easily replaceable without the need to purchase a new trap
- | Accommodates Armstrong's inverted bucket, disc, thermostatic, thermostatic wafer, bimetallic and float and thermostatic traps
- | Any manufacturer's 2-bolt steam trap can be used with the Armstrong 2-bolt check valve. Different bolts may be required. The 2-bolt check valve will add 1/2" length to the assembly

Maximum Operating Conditions

Maximum allowable pressure: 650 psig (4.5 barg) @ 600F° (315 C°)

Materials

Body: Stainless steel - 304

Weight

.56 lbs (0.25 kg)

*A 10% steam trap capacity reduction may occur when using the 2-Bolt Check Valve.