

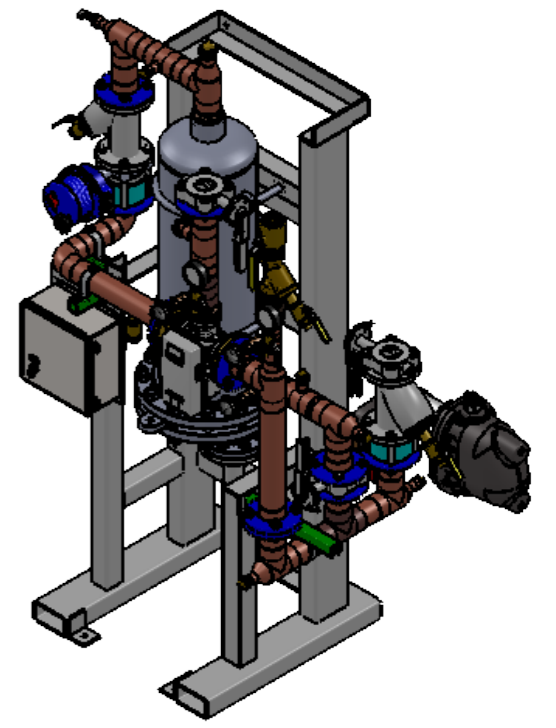
# APPROVAL

BY: \_\_\_\_\_ DATE: \_\_\_\_\_

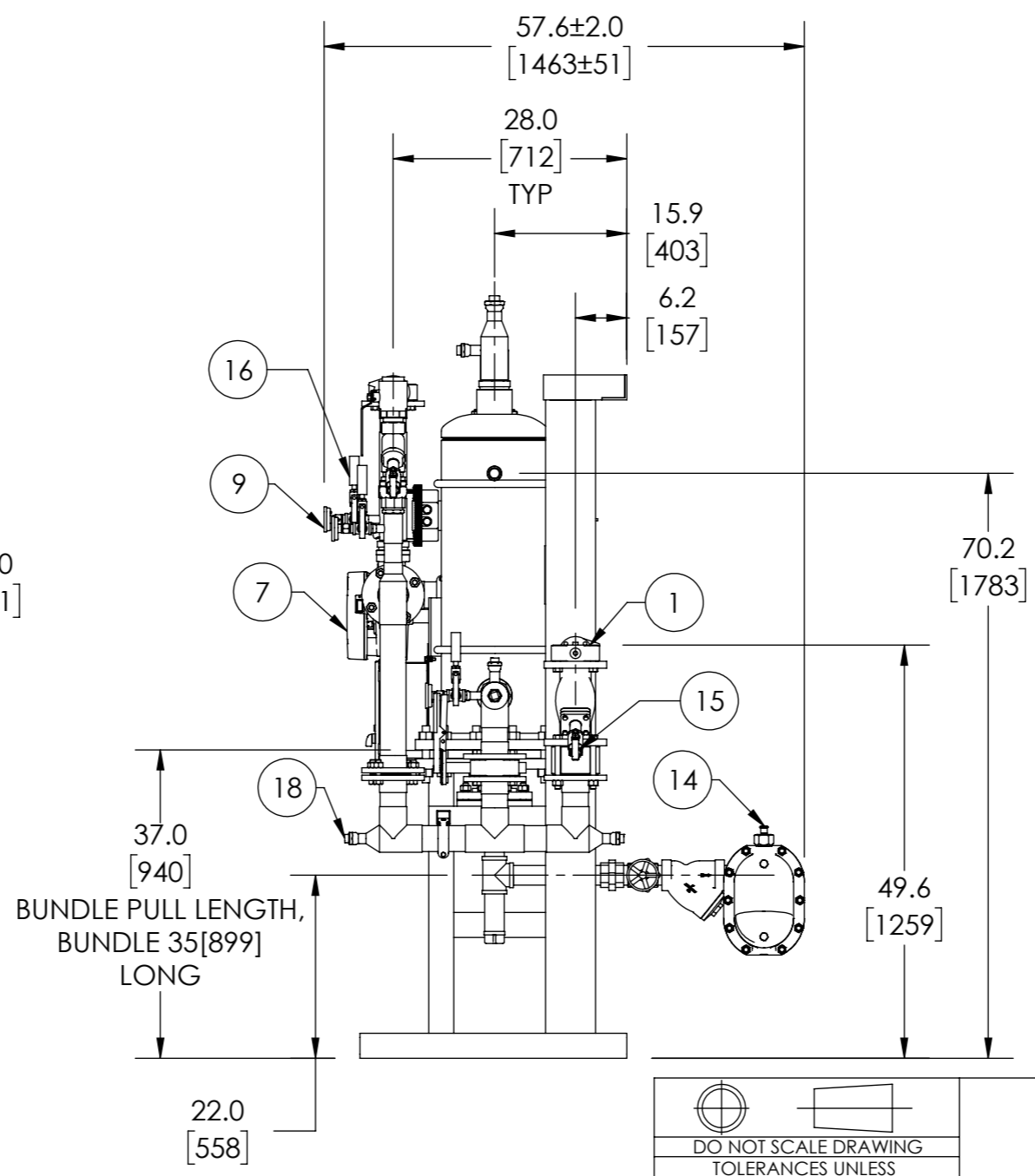
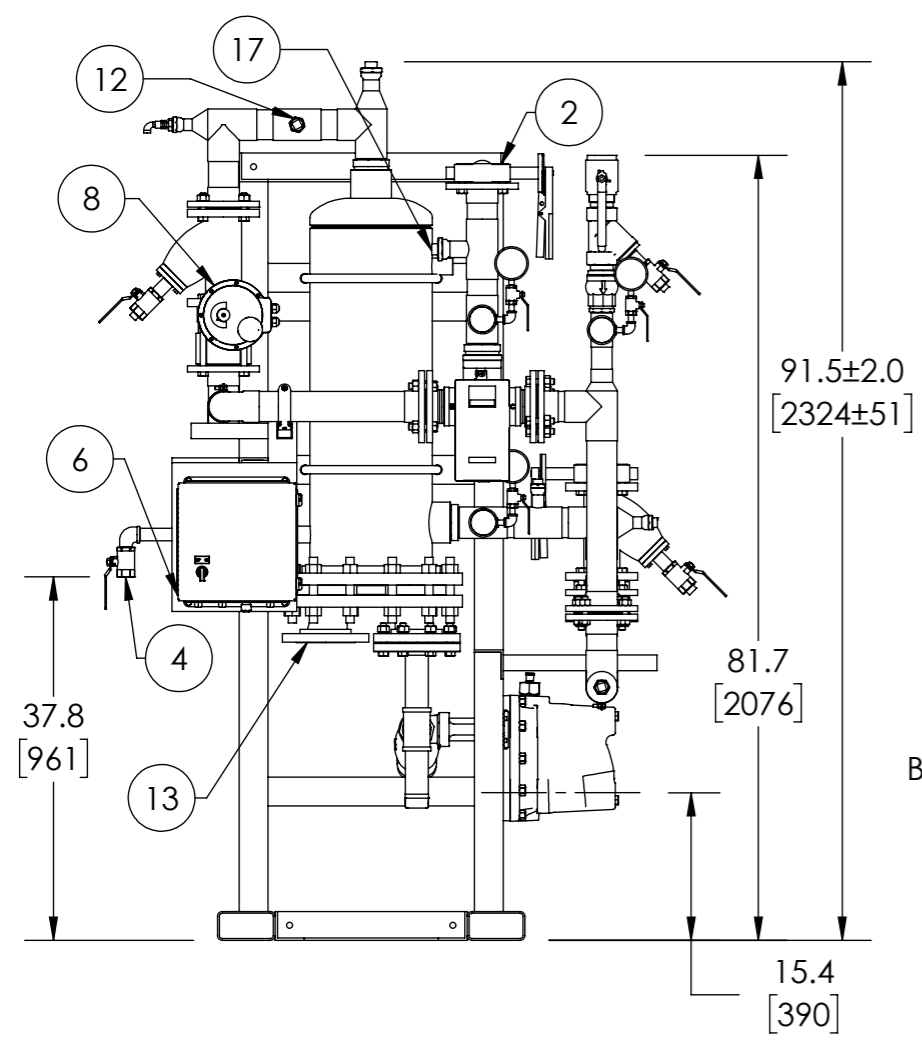
APPROVED, PROCEED WITH FABRICATION

APPROVED AS NOTED, PROCEED WITH FABRICATION IN ACCORDANCE WITH COMMENTS

DISAPPROVED, DO NOT FABRICATE



**DIGITAL FLO SEMI INSTANTANEOUS  
SINGLE WALL**



ITEM	DESCRIPTION	CONNECTION
1	COLD WATER INLET	3" FLG ANSI 150
2	MIXED WATER OUTLET	3" FLG ANSI 150
3	RECIRC WATER INLET	2" NPT
4	DRAIN	1" NPT
5	CONDENSATE OUTLET	2" NPT
6	ELECTRICAL PANEL	110VAC @1.2A
7	DRV80	3" NPT
8	N.C. ACTUATED BALL VALVE SAFETY SHUT OFF	3" FLG ANSI 150
9	THERMOMETER (3)	1/2" NPT
10	SRV CONNECTION (PRESSURE ONLY; USER SUPPLIED)	1-1/2" NPT
11	SRV (PRESSURE) PIPE TO DRAIN	1/4" NPT
12	CIP CONNECTION(2)	1" NPT
13	STEAM INLET	4" FLG ANSI 150
14	VACUUM BREAKER	1/2" NPT
15	BLOW DOWN(3)	1" NPT
16	PRESSURE GAUGE (3)	1/4" NPT
17	SRV (CONNECTION FOR USER SUPPLIED T&P)	1-1/2" NPT
18	DRAIN OR EXPANSION TANK CONNECTION	1" NPT
ITEM	MATERIAL	
	PIPING	COPPER TYPE "L"
	EXCHANGER SHELL MATL.	DUPLEX 2205 SS
	EXCHANGER TUBING MATL.	COPPER
	INSULATION JACKET	REMOVEABLE JACKET

NOTE(S):

1. ALL DIMENSIONS +/-0.5 [13] UNLESS OTHERWISE SHOWN.
2. COMPLETE ASSEMBLY LEAD FREE COMPLIANT - THE WETTED SURFACE OF THIS PRODUCT CONTACTED BY CONSUMABLE WATER CONTAINS LESS THAN ONE QUARTER OF ONE PERCENT (0.25%) OF LEAD BY WEIGHT.
3. PACKAGE INCLUDES ALL REQUIRED INLET CHECK VALVES AND STRAINERS ON DOMESTIC SIDE.
4. DRV, SAFETY SHUT OFF AND ELECTRICAL PANEL ARE PREWIRED TO PROVIDE A SINGLE ELECTRICAL LANDING POINT AT THE PANEL.

DO NOT SCALE DRAWING TOLERANCES UNLESS OTHERWISE SPECIFIED		
DIMENSIONING ENGLISH [mm]		
FRACTIONAL ± 1/64 ANGULAR: ± 2		
DECIMAL	.XXXX ± .0005	MM
	.XXX ± .005	.010
	.XX ± .015	.10
	.X	.3

ARMSTRONG INTERNATIONAL  
Copyright © 2010 ARMSTRONG INTERNATIONAL, INC.  
DFS9080BS

	NAME	DATE
DRAWN	CFG	5/18/2015
RELEASED		

MATERIAL		SHEET 1 OF 1
REV A	SALES	