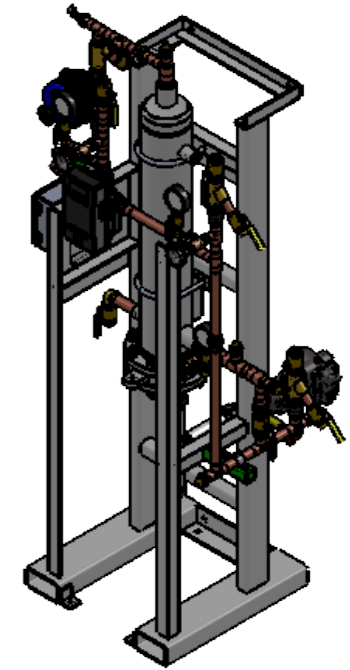


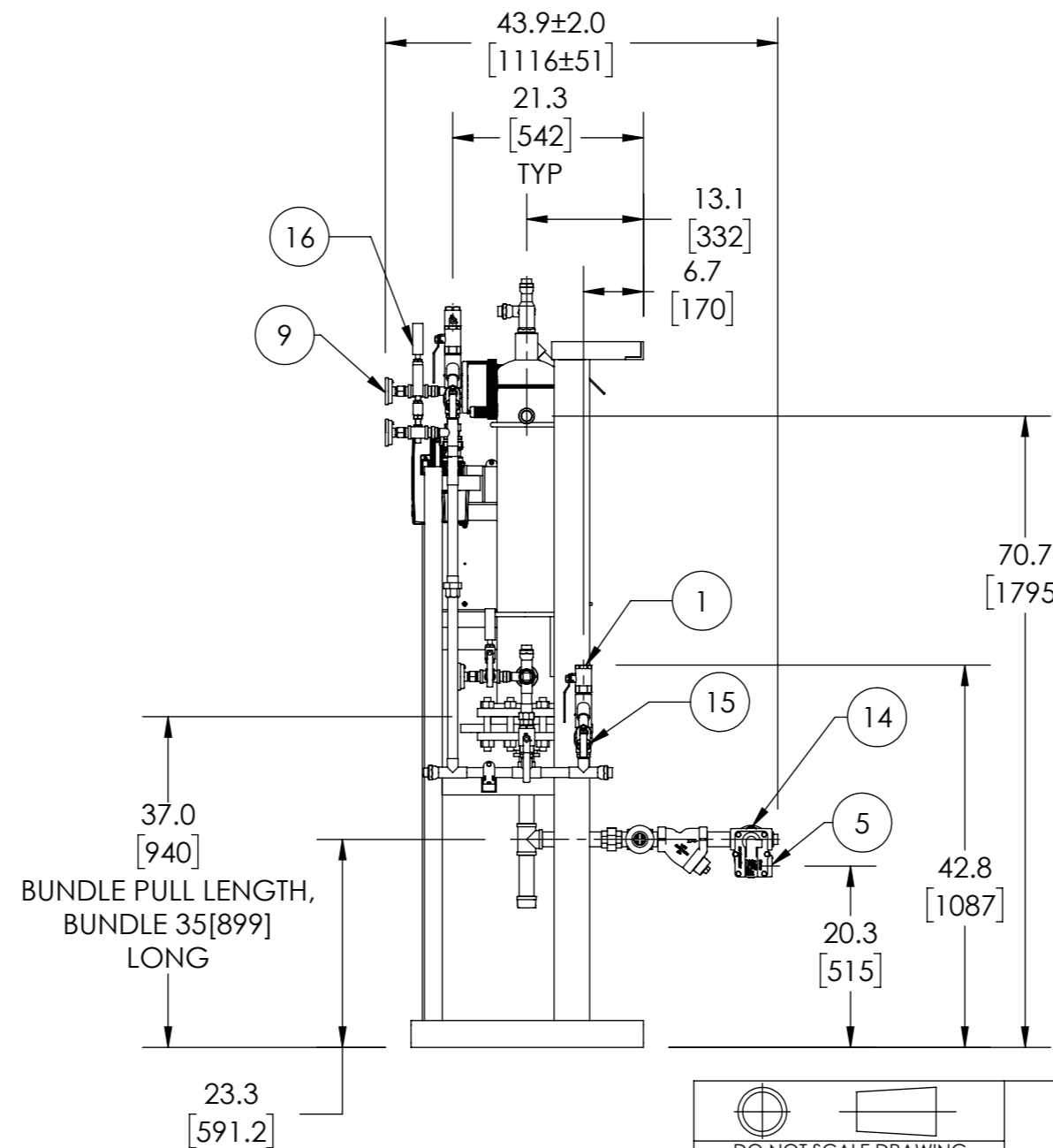
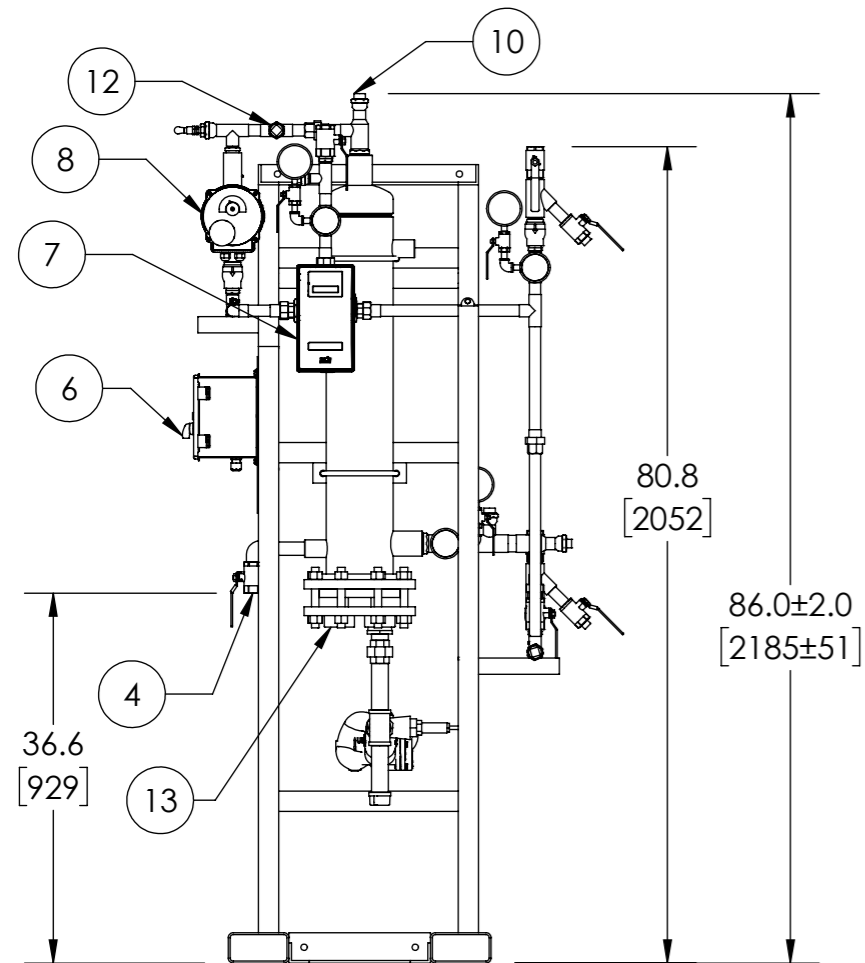
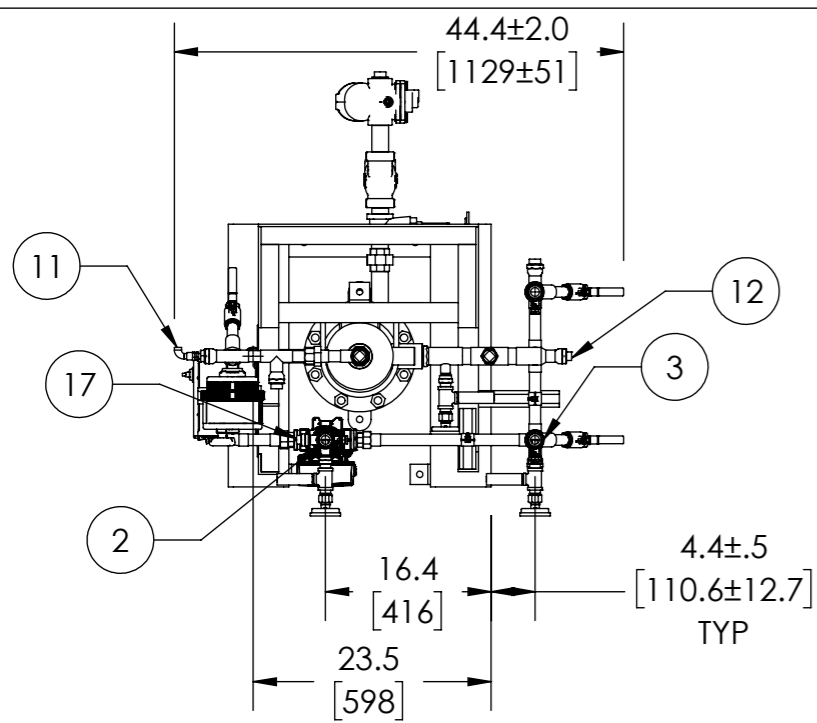
APPROVAL

BY: _____ DATE: _____

- APPROVED, PROCEED WITH FABRICATION
- APPROVED AS NOTED, PROCEED WITH FABRICATION IN ACCORDANCE WITH COMMENTS
- DISAPPROVED, DO NOT FABRICATE



**DIGITAL FLO SEMI INSTANTANEOUS
DOUBLE WALL**



ITEM	DESCRIPTION	CONNECTION
1	COLD WATER INLET	1" NPT
2	MIXED WATER OUTLET	1" NPT
3	RECIRC WATER INLET	1" NPT
4	DRAIN	1" NPT
5	CONDENSATE OUTLET	1-1/4" NPT
6	ELECTRICAL PANEL	110VAC @0.7A
7	DRV40	1-1/2" NPT
8	N.C. ACTUATED BALL VALVE SAFETY SHUT OFF	1" NPT
9	THERMOMETER (3)	
10	CIP CONNECTION	1" NPT
11	SRV (PRESSURE) PIPE TO DRAIN	1/4" NPT
12	SRV (CONNECTION FOR USER SUPPLIED T&P) (2)	1" NPT
13	STEAM INLET	2" NPT
14	VACUUM BREAKER	1/2" NPT
15	BLOW DOWN (3)	
16	PRESSURE GAUGE (3)	
17	SRV (CONNECTION FOR USER SUPPLIED T&P)	3/4" NPT

ITEM	MATERIAL
PIPING	COPPER TYPE "L"
EXCHANGER SHELL MATL.	DUPLEX 2205 SS
EXCHANGER TUBING MATL.	COPPER
INSULATION JACKET	REMOVEABLE JACKET

NOTE(S):

- ALL DIMENSIONS +/-0.5 [13] UNLESS OTHERWISE SHOWN.
- COMPLETE ASSEMBLY LEAD FREE COMPLIANT - THE WETTED SURFACE OF THIS PRODUCT CONTACTED BY CONSUMABLE WATER CONTAINS LESS THAN ONE QUARTER OF ONE PERCENT (0.25%) OF LEAD BY WEIGHT.
- PACKAGE INCLUDES ALL REQUIRED INLET CHECK VALVES AND STRAINERS ON DOMESTIC SIDE.
- DRV, SAFETY SHUT OFF AND ELECTRICAL PANEL ARE PREWIRED TO PROVIDE A SINGLE ELECTRICAL LANDING POINT AT THE PANEL.
- ITEM #11 IS 1/4 [6.4] PIPE TO DRAIN IF FACTORY PRESS RELIEF VALVE IS USED.

DO NOT SCALE DRAWING TOLERANCES UNLESS OTHERWISE SPECIFIED		
DIMENSIONING ENGLISH [mm]		
FRACTIONAL ± 1/64 ANGULAR: ± 2		
DECIMAL	.XXXX ± .0005	IN. / .010
	.XXX ± .005	MM / .10
	.XX ± .015	MM / .10
	.X	MM / .3

NAME	DATE
CFG	5/18/2015
RELEASED	

ARMSTRONG INTERNATIONAL
Copyright © 2010 ARMSTRONG INTERNATIONAL, INC.

DFS15DW40

MATERIAL	SHEET 1 OF 1
REV A	