

DIGITAL SOLUTIONS FOR HEALTHY HOT WATER

SUPERIOR PROTECTION
AGAINST **SCALDING**



REGULATORY AND
ORGANIZATIONAL **COMPLIANCE**



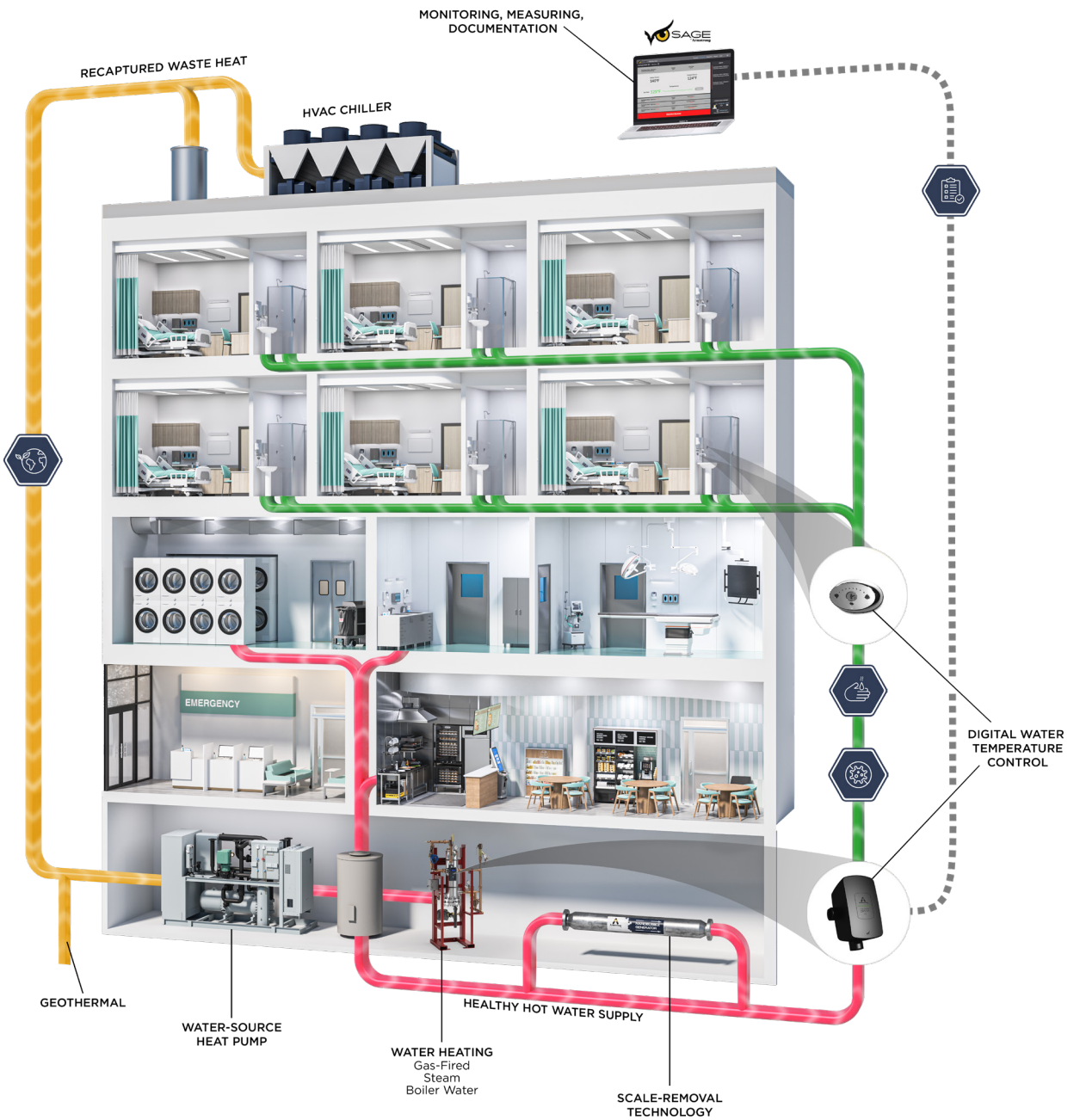
INDUSTRY-
LEADING
SUSTAINABILITY



**BEST-IN-CLASS
INFECTION CONTROL**



Armstrong®
EXPERIENCE MATTERS®





**INDUSTRY-LEADING
SUSTAINABILITY**



**BEST-IN-CLASS
INFECTION CONTROL**



**SUPERIOR PROTECTION
AGAINST SCALDING**



**REGULATORY AND
ORGANIZATIONAL
COMPLIANCE**

A HOLISTIC, DIGITAL SOLUTION FOR HEALTHY HOT WATER SYSTEMS

**FROM ARMSTRONG INTERNATIONAL, THE GLOBAL PIONEERS
OF DIGITAL HOT WATER TEMPERATURE CONTROL.**

ArmadaSM combines the power of Armstrong's exhaustive knowledge and expertise with our industry-leading hot water technology, tools and software to deliver safe, healthy, domestic hot water throughout your facility.

Whether it's a complete hot water system or a single product, your ArmadaSM solution will include only what's appropriate for your unique needs. Our products are optimized for performance and designed to work in combination or individually, allowing us the flexibility to design every ArmadaSM solution to meet the toughest requirements of the facility, mechanical room and industry.

DIGITAL WATER TEMPERATURE CONTROL



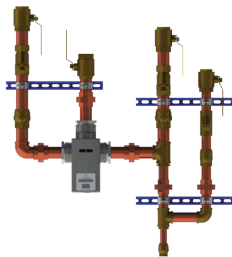
THE BRAIN® DIGITAL RECIRCULATING VALVE (DRV)

Armstrong's groundbreaking digital technology is engineered exclusively for continuously recirculated hot water systems. The Brain® resists low/no fixture demand temperature creep and improves hot water system performance and safety by delivering hot water at consistent, pre-set temperatures to points of use. Available as a standalone solution in 3 flow capacities and configurable into multiple pre-piped assemblies.

- | **Key performance metrics:** +/- 2°F temperature control and a minimum 1°F inlet to outlet differential which supports energy efficient, low temperature loss systems.
- | **Integral safety and operational features:** Component self-diagnostics, power failure shutoff emergency mode, programmable set point with over/under set point alert, on-board BACnet connectivity and a thermal disinfection option.



The Brain® with Recirculating Manifold



The Brain® with Digital Mixing Center (DMC) Flex



The Brain® Digital Mixing Center (DMC) with isolation valves, strainers

SENSE™ POINT-OF-USE, HANDS-FREE DIGITAL MIXING VALVE (DMV)

Sense™ is a Bluetooth-programmable, concealed point-of-use, digital mixing valve supplied with a wall surface-mount sensor for hands-free control of water temperature and flow for showers, bathtubs and lavatories.



Pre-set temperature and flow reduce water and energy usage and protect users from scalding. Digital duty flush limits waterborne pathogen growth and water consumption.

SCALE-REMOVAL TECHNOLOGY

ARMSTRONG NANOBUBBLE GENERATOR

The Armstrong Nanobubble Generator is a cost-effective, sustainable solution, proven to remove and inhibit scale and mineral buildup within industrial process and commercial/institutional hot water systems. By significantly reducing scale, the Armstrong Nanobubble Generator increases overall hot water system health, improves heat transfer, and drives operational efficiencies, leading to lower maintenance costs, longer equipment life, reduced CIP frequency, improved chemical efficiency, and a smaller carbon footprint.



MONITORING, MEASURING AND DOCUMENTATION

SAGE® FOR HOT WATER SYSTEMS

SAGE® software keeps you informed 24/7 with regular updates and real-time alerts to ensure a consistent supply of hot water at precision-controlled temperatures.

Working seamlessly with The Brain®, SAGE® analyzes data to track behavior and performance as an integral component of hot water system operation protocol that complies with Standards of Care to minimize risks of scald injury, Legionella-related illness, and associated litigation. Armstrong's digital hot water solutions, including The Brain®, are available SAGE®-enabled.



WATER-SOURCE HEAT PUMPS

ARMSTRONG HEAT PUMP SOLUTIONS

Armstrong heat pumps redeploy waste heat from your central HVAC system and other sources to generate hot water—without burning fossil fuel onsite. A geothermal option is also available. Our heat pump package solutions offer significant advantages, including reduced reliance on fossil fuels, resulting in lower CO₂ emissions and improved COP.

Customized hybrid systems that include a heat pump as the primary hot water source and use an electric, gas or steam-fired appliance for peak demand or low waste heat periods offer effective, sustainable solutions.

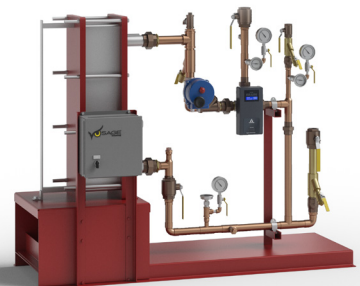


BOILER WATER/WATER HEATING

DIGITAL-FLO® BOILER WATER PHE

Digital-Flo® Boiler Water PHE is a pre-piped water heating package solution that features The Brain® Digital Recirculation Valve (DRV) for hot water system water temperature control.

Available with single wall or double wall heat exchangers in standard 15, 35, 65, 90 and 120 GPM capacities, Digital-Flo® can be customized to suit your specific application needs.

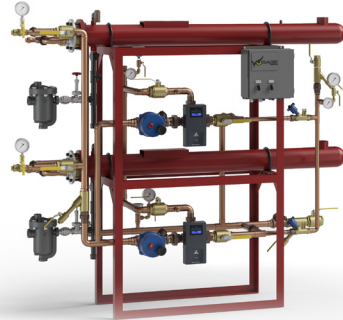


STEAM/WATER HEATING

DIGITAL-FLO® INSTANTANEOUS

The Digital-Flo® Instantaneous Steam/Water Heater is a pre-piped, packaged water heating solution featuring The Brain® Digital Recirculation Valve (DRV) for hot water system water temperature control.

Offered with single wall or double wall heat exchangers in standard 15, 35, 65 and 120 GPM capacities, and available in parallel and redundant configurations. Digital-Flo® can be customized to suit specific application needs.



DIGITAL-FLO® SEMI-INSTANTANEOUS

The Digital-Flo® Semi-Instantaneous Steam/Water Heater is a pre-piped, packaged water heating solution featuring The Brain® Digital Recirculation Valve (DRV) for hot water system water temperature control.

Digital-Flo® is available with single wall or double wall heat exchangers in standard 15, 35, 50 and 90 GPM capacities.



CONSTANTEMP®

Constantemp® Steam/Water Heaters pack reliable, accurate performance into small spaces. Constantemp® features a helical coiled heat exchanger that operates with steam pressures between 2-15 psig to provide hot water within +/- 3°F of the outlet set-point temperature.

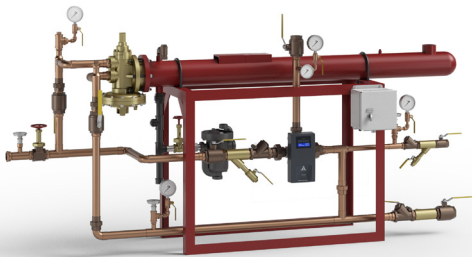
Available in standard flow capacities of 30, 60, 90 and 120 GPM.

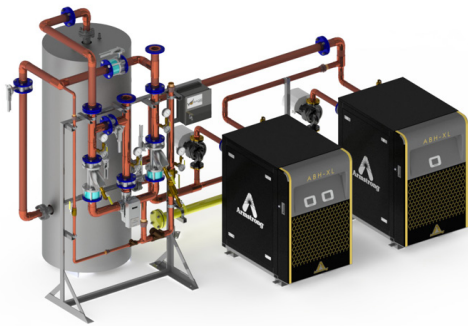


FLO-RITE-TEMP®

The Flo-Rite-Temp® Steam/Water Heater is a pre-piped, water heating package solution that includes a shell-and-tube-heat exchanger fitted with an integral control valve for water heating and system temperature and control. Standard packages are offered for both non-recirculating and recirculating systems.

Flo-Rite-Temp® can be customized to suit your specific application needs. Available with single wall or double wall heat exchangers in standard 15, 35, 65 and 120 GPM capacities, in parallel and redundant configurations.





GAS-FIRED WATER HEATING

ABH XL HOT WATER GENERATION AND CONTROL

ABH XL Gas-Fired Water Heaters are provided as comprehensive, packaged water heating solutions, complete with The Brain® Digital Recirculation Valve (DRV) for accurate hot water system water temperature control.

Available in standard 800, 1000 and 1500 Btu capacities, ABH water heater assemblies are designed and built to meet the exact requirements of your installation site. ABH water heaters can be cascaded, and all systems are shipped ready to set in place with minimal assembly.

GAS-FIRED HYDRONIC HEATING

ABH SERIES GAS-FIRED HYDRONIC HEATING

Armstrong's ABH XL gas-fired boilers are provided as a pre-piped, packaged solution for space heating. ABH XL is available in 299, 399, 599, 800, 1000 and 1500 BTU models, which can be cascaded up to 8 units per installation for ultimate flexibility. Our complete, single-footprint heating solutions are configured and pre-assembled at the factory to meet the installation's exact requirements, then shipped plug-and-play ready.





INTELLIGENT THERMAL UTILITIES SOLUTIONS FROM A GLOBAL
LEADER IN ENERGY MANAGEMENT AND ENJOYABLE EXPERIENCES

Armstrong International

The Americas | Asia | Europe, Middle East, Africa

armstronginternational.com